

Attachment I-14: Instrumentation

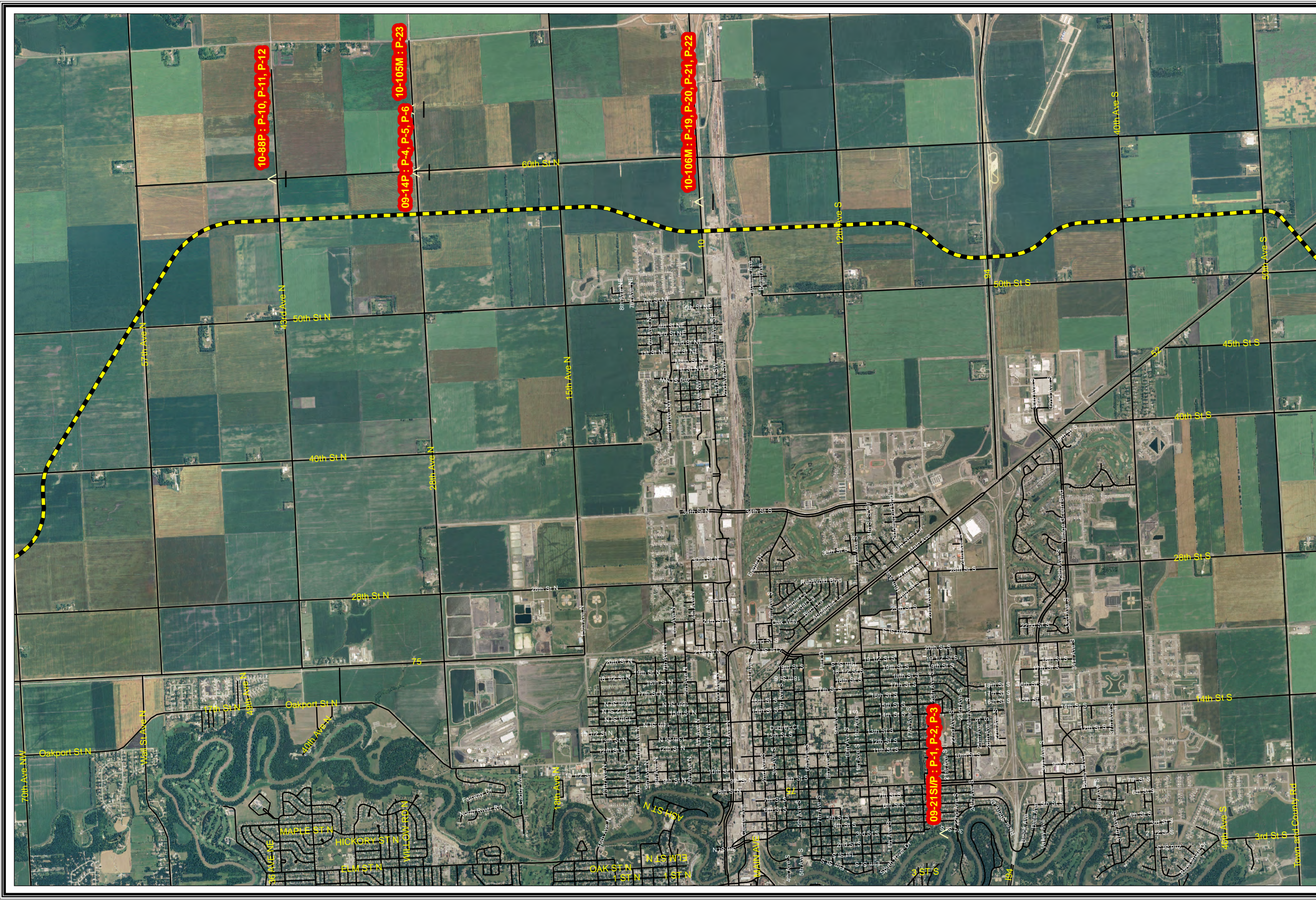


Project: Fargo-Moorhead Metro Feasibility Study
 Subject: Summary of Piezometers

Generated By: KAH
 Date: 07/14/10

Last Modified By: KAH
 Date of Last Revision: 09/02/10

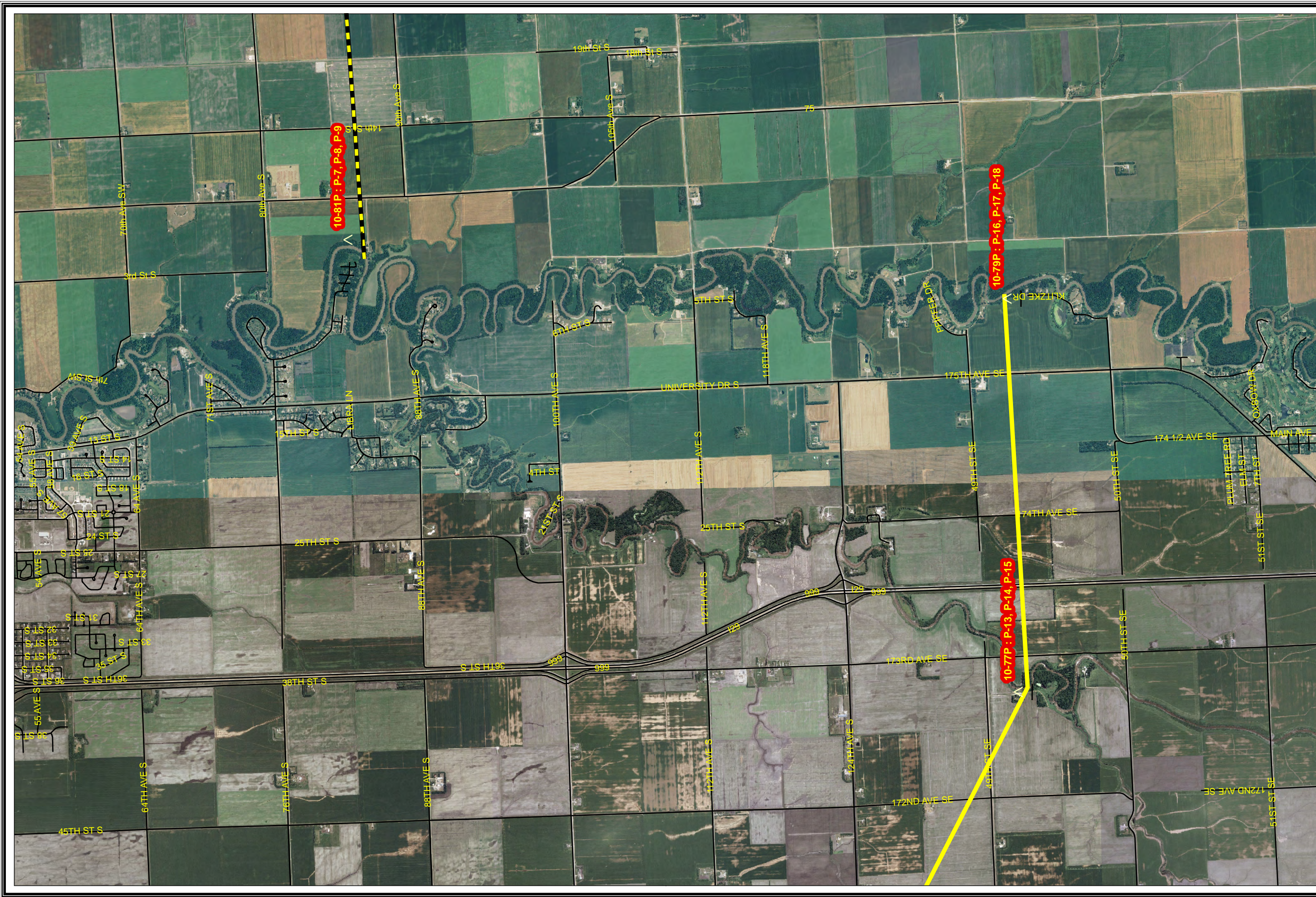
Piezometers	Location	Boring	Ground Surface Elevation	Depth	Elevation
P1	Gooseberry Park, Moorhead	Moorhead 09-21M/P	886.2	16.3	869.9
P2				48.3	837.9
P3				75.3	810.9
P4	28th Ave N & 60th St N	Moorhead 09-14M/P	913.1	20.0	893.1
P5				50.0	863.1
P6				75.0	838.1
P7	MN Diversion Red River Control Structure	Moorhead 10-81M/P	907.8	30.0	877.8
P8				60.0	847.8
P9				90.0	817.8
P10	93rd Ave N & 60th St N	Moorhead 10-88M/P	911.3	35.0	876.3
P11				70.0	841.3
P12				105.0	806.3
P13	Wild Rice River, Brodshaug Farmyard	Fargo 10-77M/P	905.7	30.0	875.7
P14				50.0	855.7
P15				100.0	805.7
P16	ND Diversion Red River Control Structure	Fargo 10-79M/P	905.3	80.0	825.3
P17				20.0	885.3
P18				40.0	865.3
P19	MN Diversion, HWY 10	Moorhead 10-106M/P	913.3	19.4	893.9
P20				64.4	848.9
P21				81.4	831.9
P22				101.4	811.9
P23	Buffalo Aquifer, 28th Ave N	Moorhead 10-105M/P	916.6	43.0	873.6



Fargo-Moorhead Metro Feasibility Study
Piezometer Locations Overview (North End)



FMMFS_P3_geotech_20010-07.mxd
Printed 4 AUG 2010



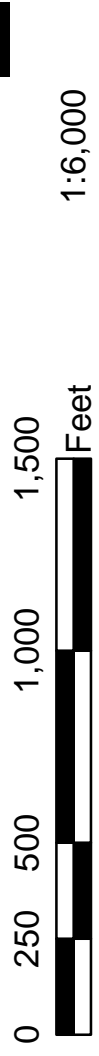
Fargo-Moorhead Metro Feasibility Study
Piezometer Locations Overview (South End)



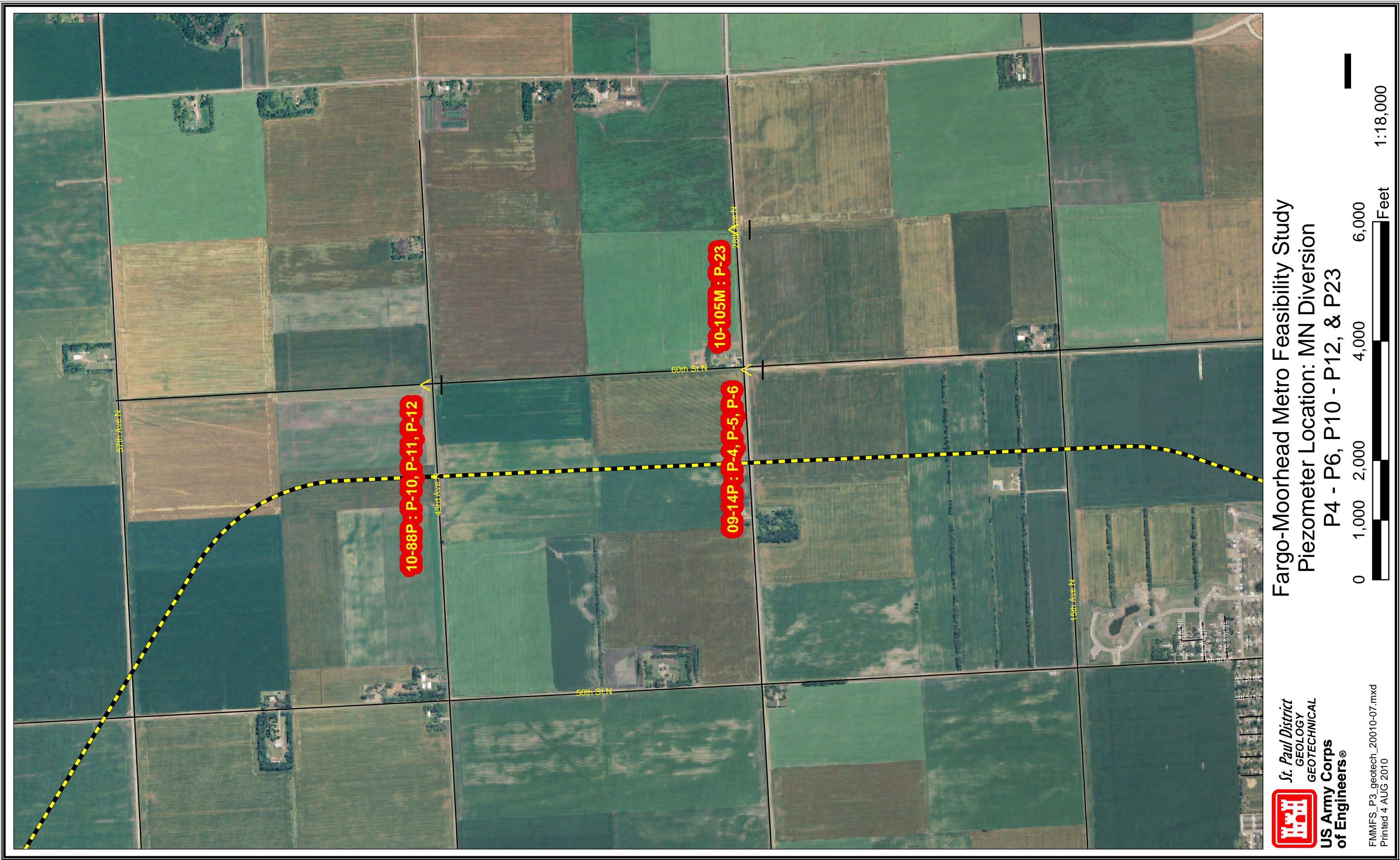
FMMFS_P3_geotech_20010-07.mxd
Printed 4 AUG 2010



Fargo-Moorhead Metro Feasibility Study
 Piezometer Location: Moorhead 09-21P (P1, P2, P2)
 Gooseberry Park, Moorhead, MN



FMMFS_P3_geotech_20010-07.mxd
 Printed 4 AUG 2010

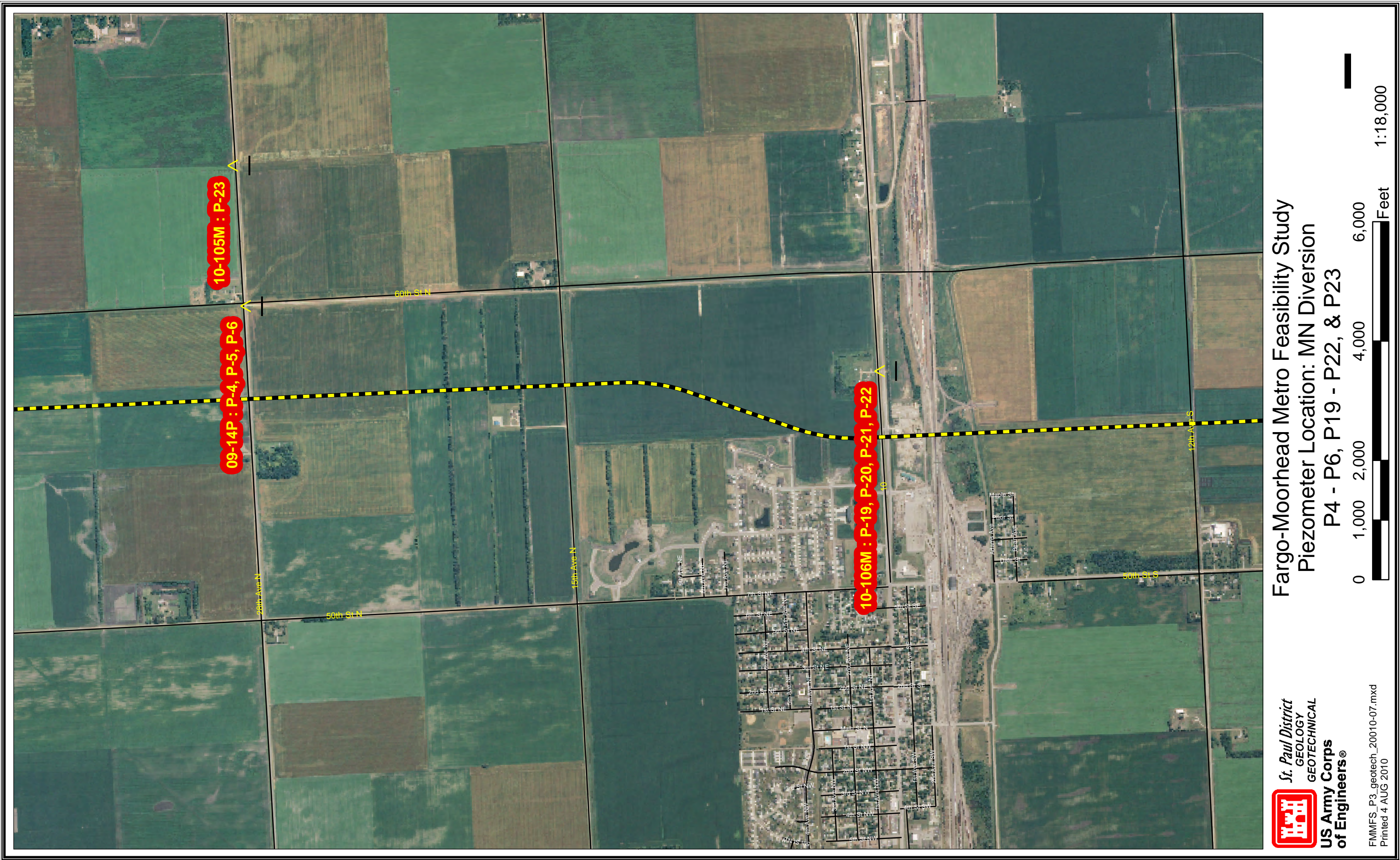


Fargo-Moorhead Metro Feasibility Study
 Piezometer Location: MN Diversion
 P4 - P6, P10 - P12, & P23

St. Paul District
 GEOLOGY
 GEOTECHNICAL
US Army Corps
 of Engineers®



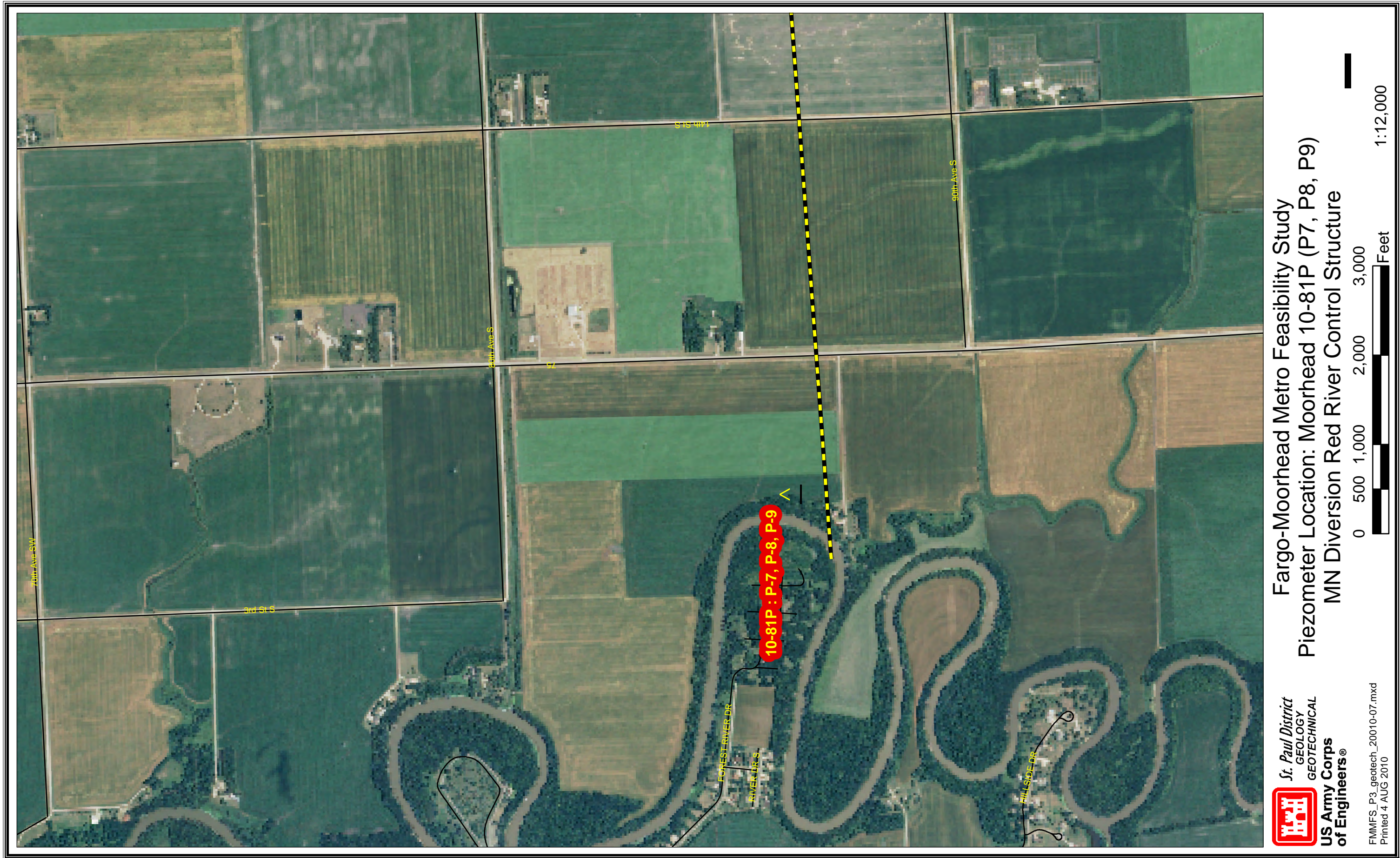
FMMFS_P3_geotech_20010-07.mxd
 Printed 4 AUG 2010



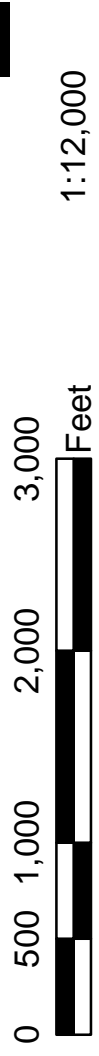
Fargo-Moorhead Metro Feasibility Study
 Piezometer Location: MN Diversion
 P4 - P6, P19 - P22, & P23



FMMFS_P3_geotech_20010-07.mxd
 Printed 4 AUG 2010



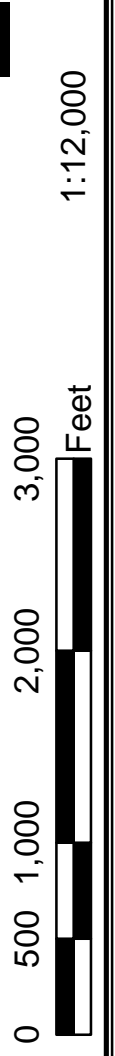
Fargo-Moorhead Metro Feasibility Study
 Piezometer Location: Moorhead 10-81P (P7, P8, P9)
 MN Diversion Red River Control Structure



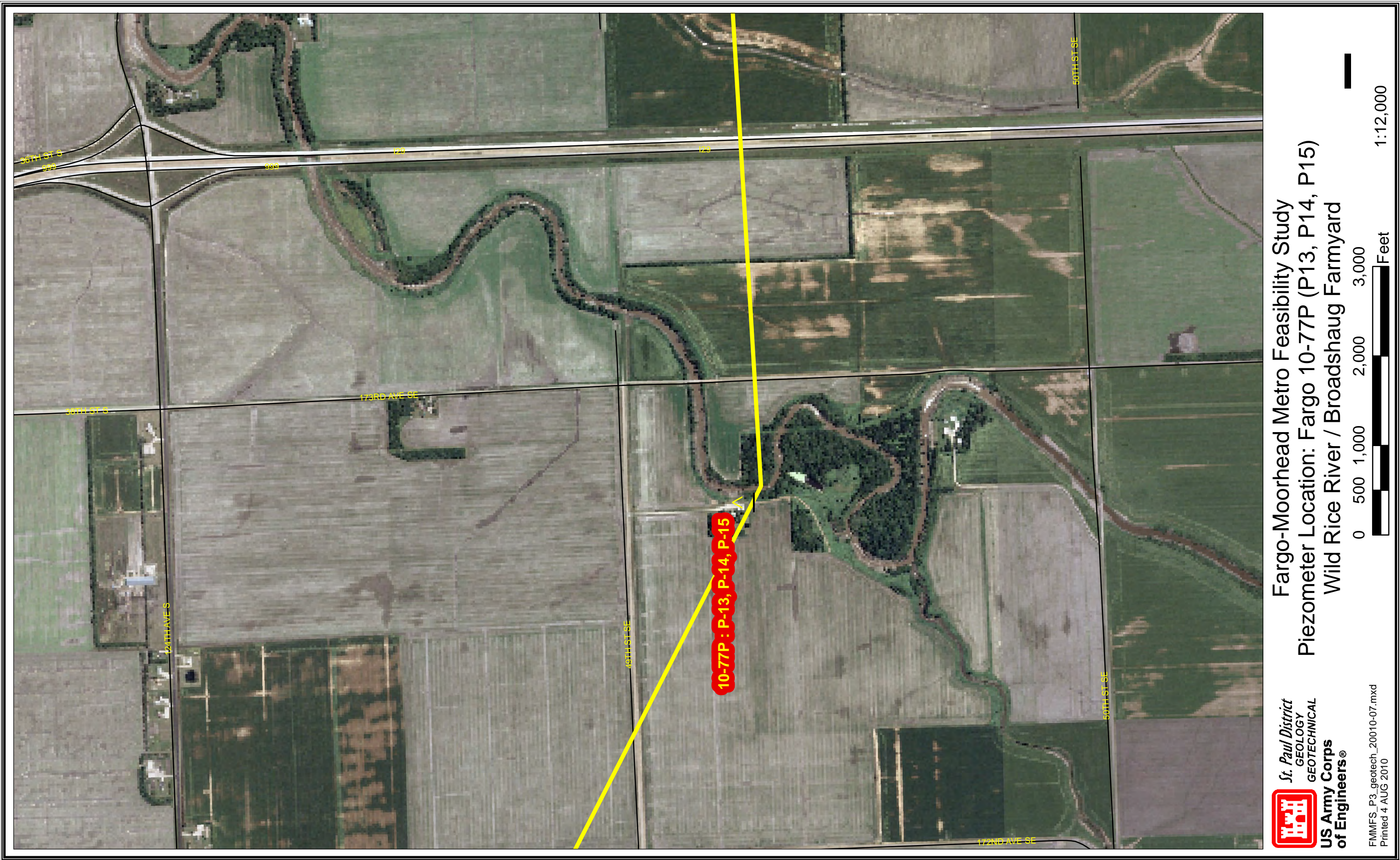
FMMFS_P3_geotech_20010-07.mxd
 Printed 4 AUG 2010



Fargo-Moorhead Metro Feasibility Study
 Piezometer Location: Fargo 10-79P (P16, P17, P18)
 ND Diversion Red River Control Structure

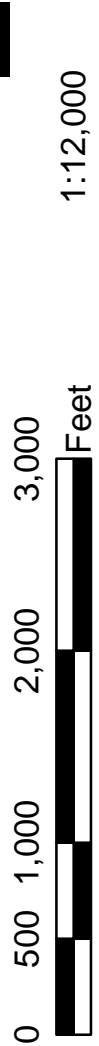


FMMFS_P3_geotech_20010-07.mxd
 Printed 4 AUG 2010

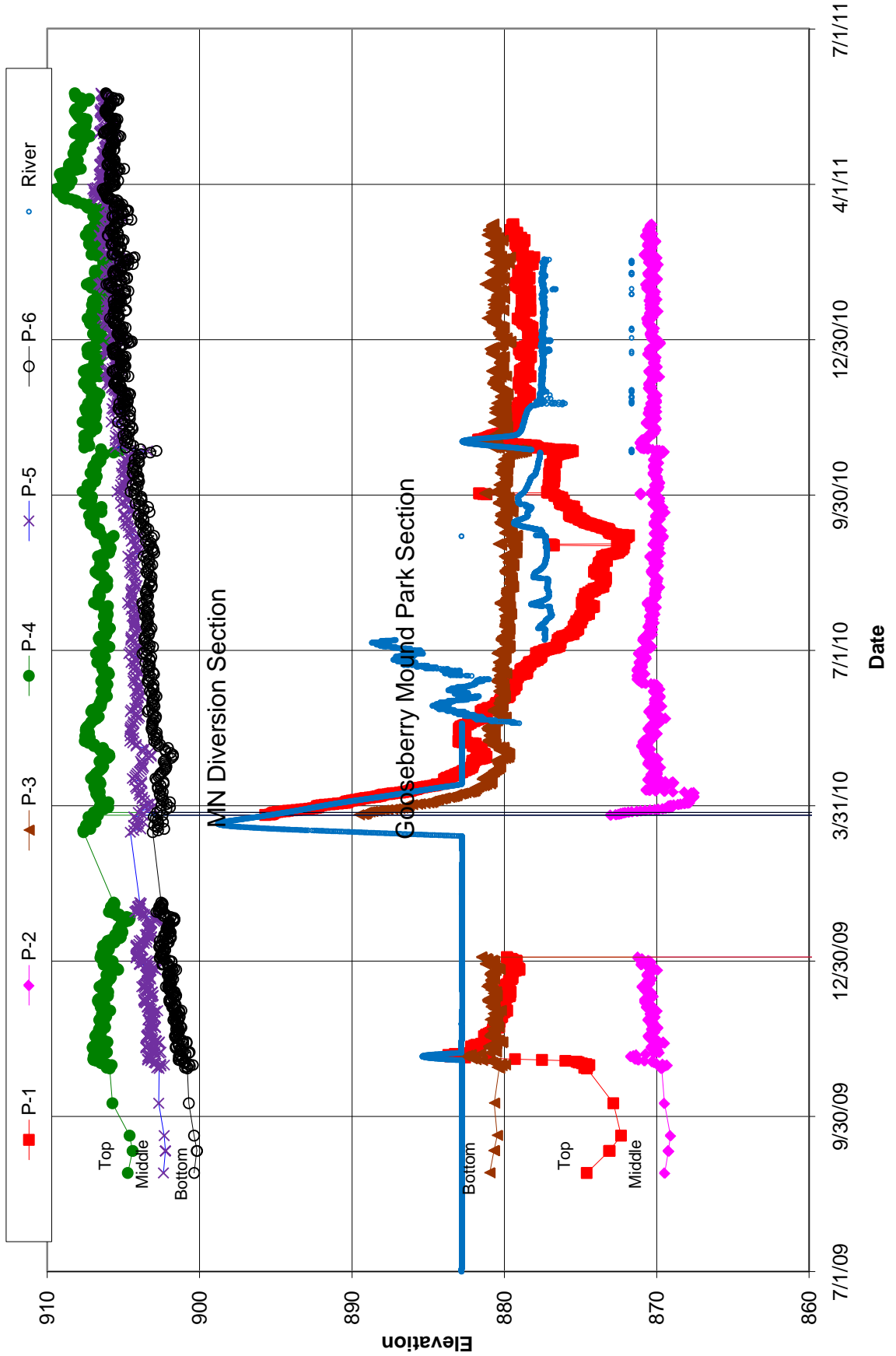


Fargo-Moorhead Metro Feasibility Study
 Piezometer Location: Fargo 10-77P (P13, P14, P15)
 Wild Rice River / Broadshaug Farmyard

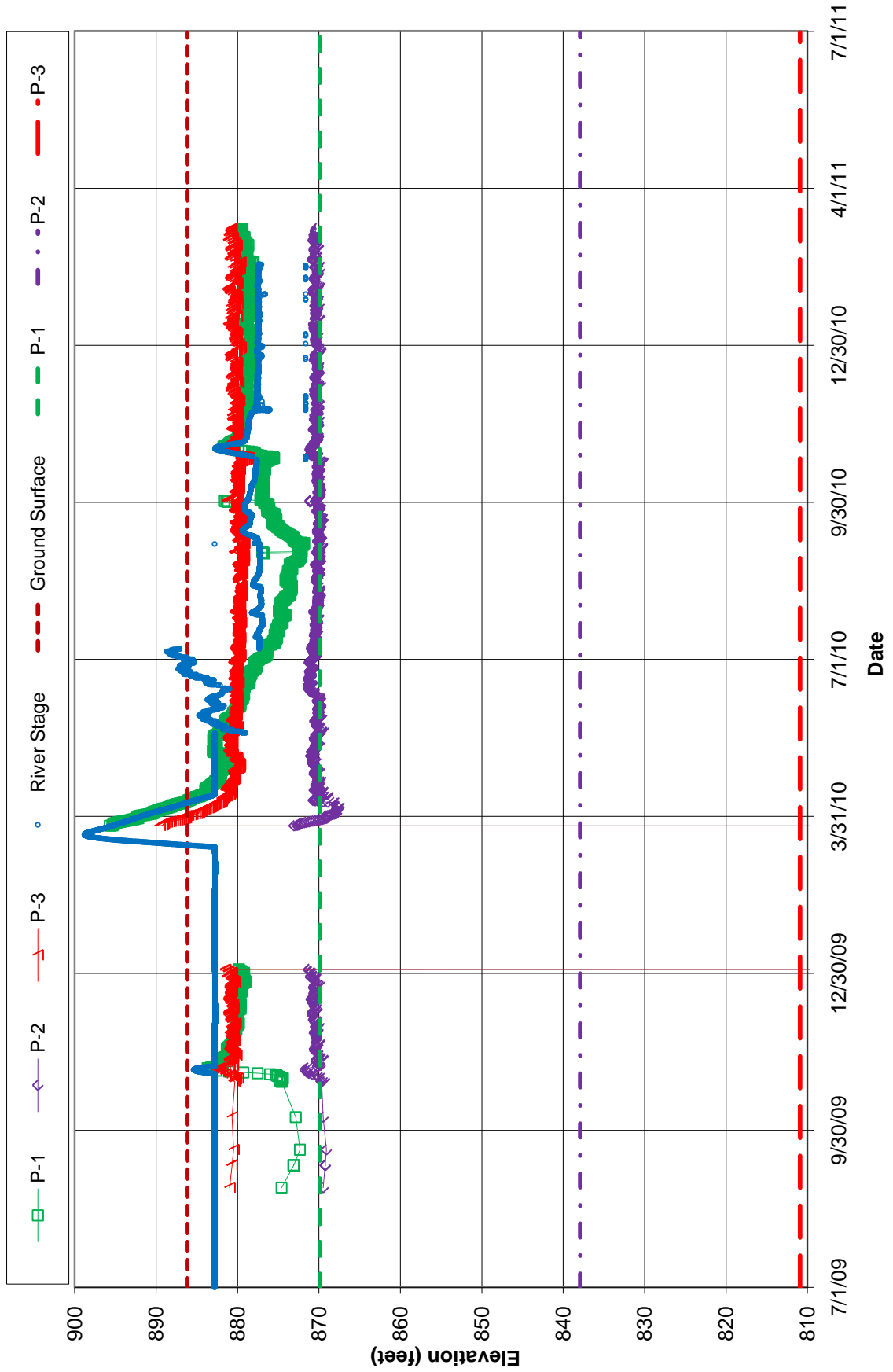
FMMFS_P3_geotech_20010-07.mxd
 Printed 4 AUG 2010



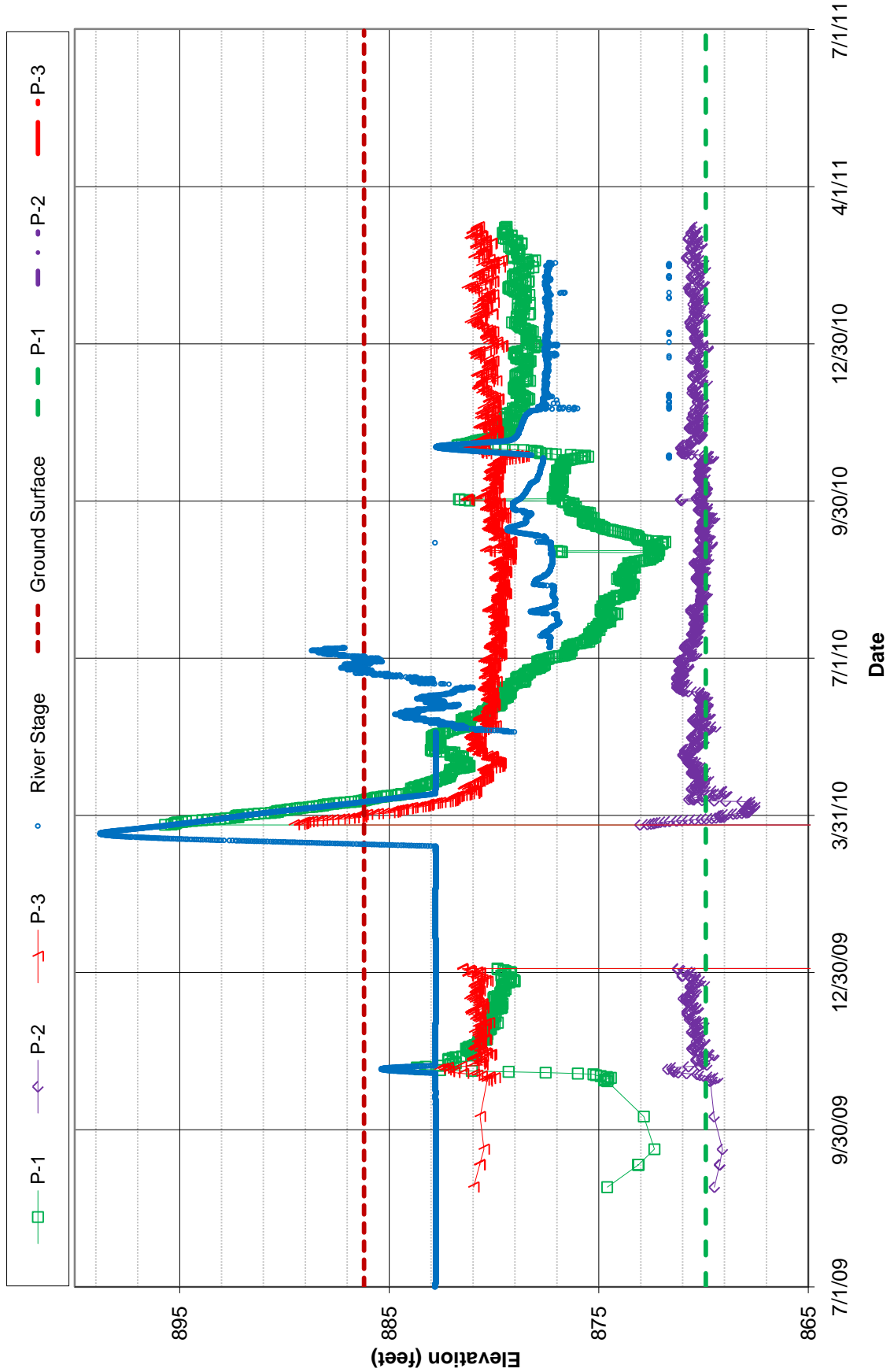
**Fargo-Moorhead Metro Feasibility Study
Piezometric Levels
Regression Relationship Used**



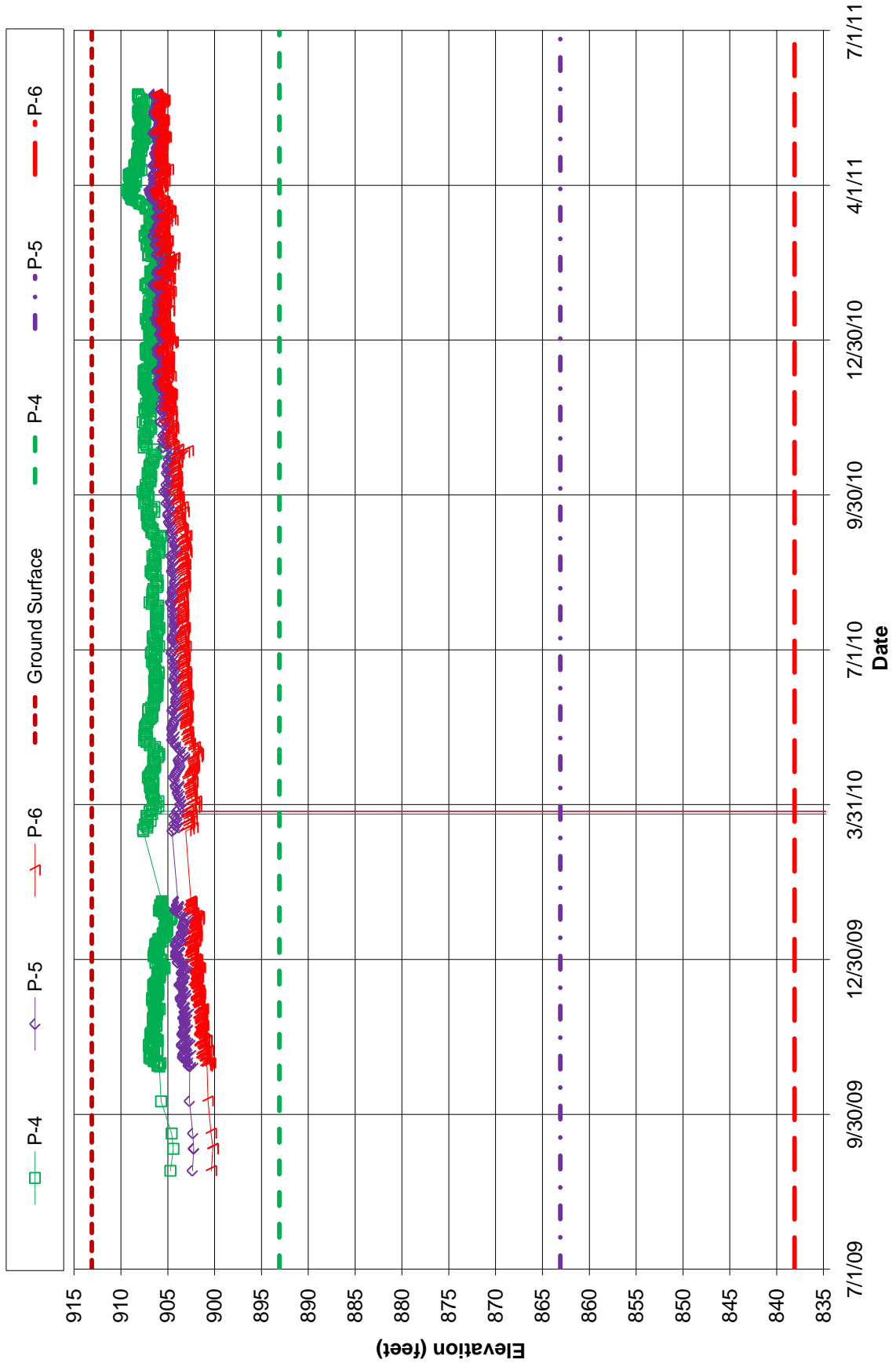
**Fargo-Moorhead Metro Feasibility Study
Piezometers: P1, P2 & P3
Gooseberry Park in Moorhead, MN, 09-21M**



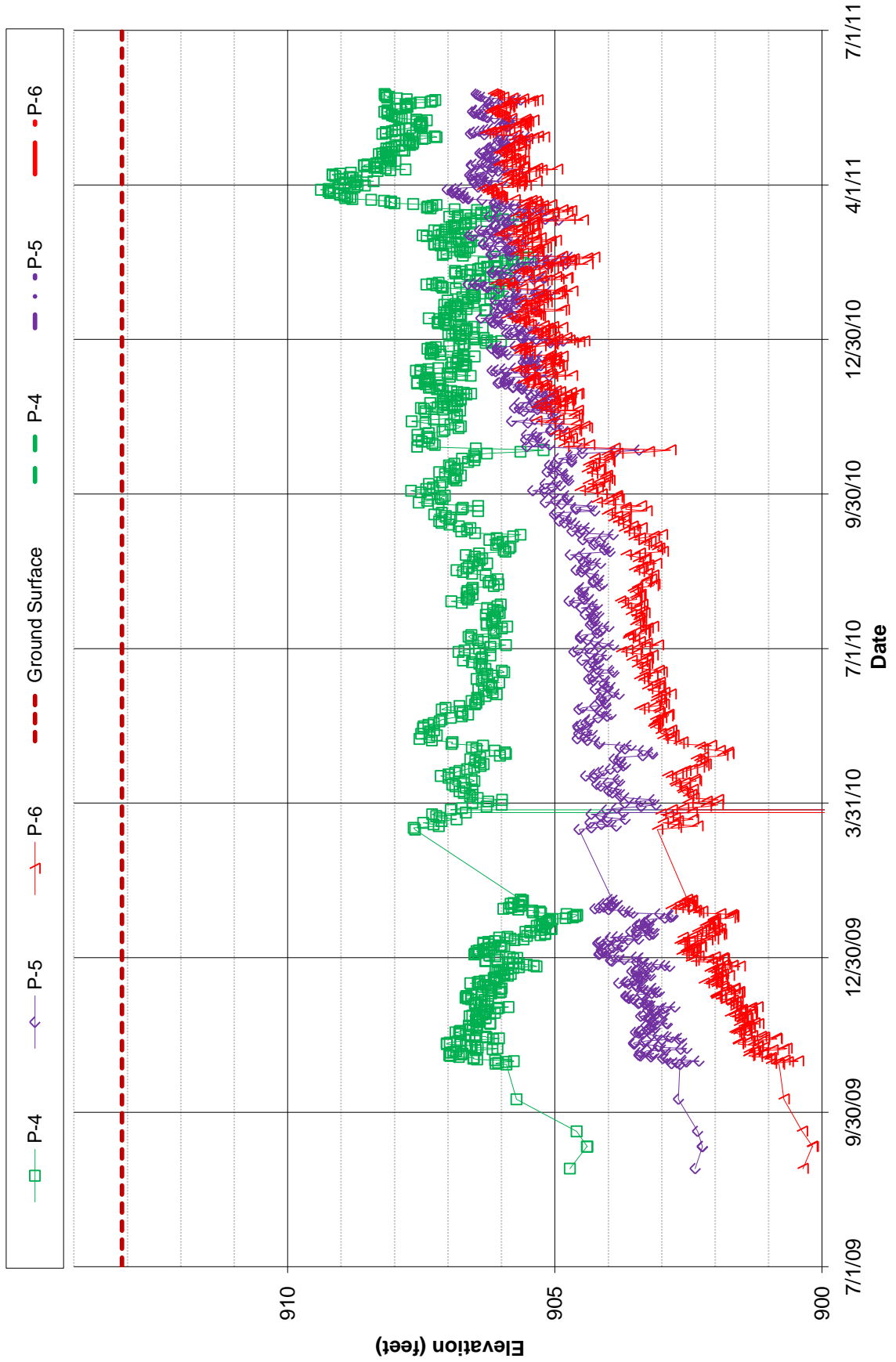
**Fargo-Moorhead Metro Feasibility Study
Piezometers: P1, P2 & P3
Gooseberry Park in Moorhead, MN, 09-21M**



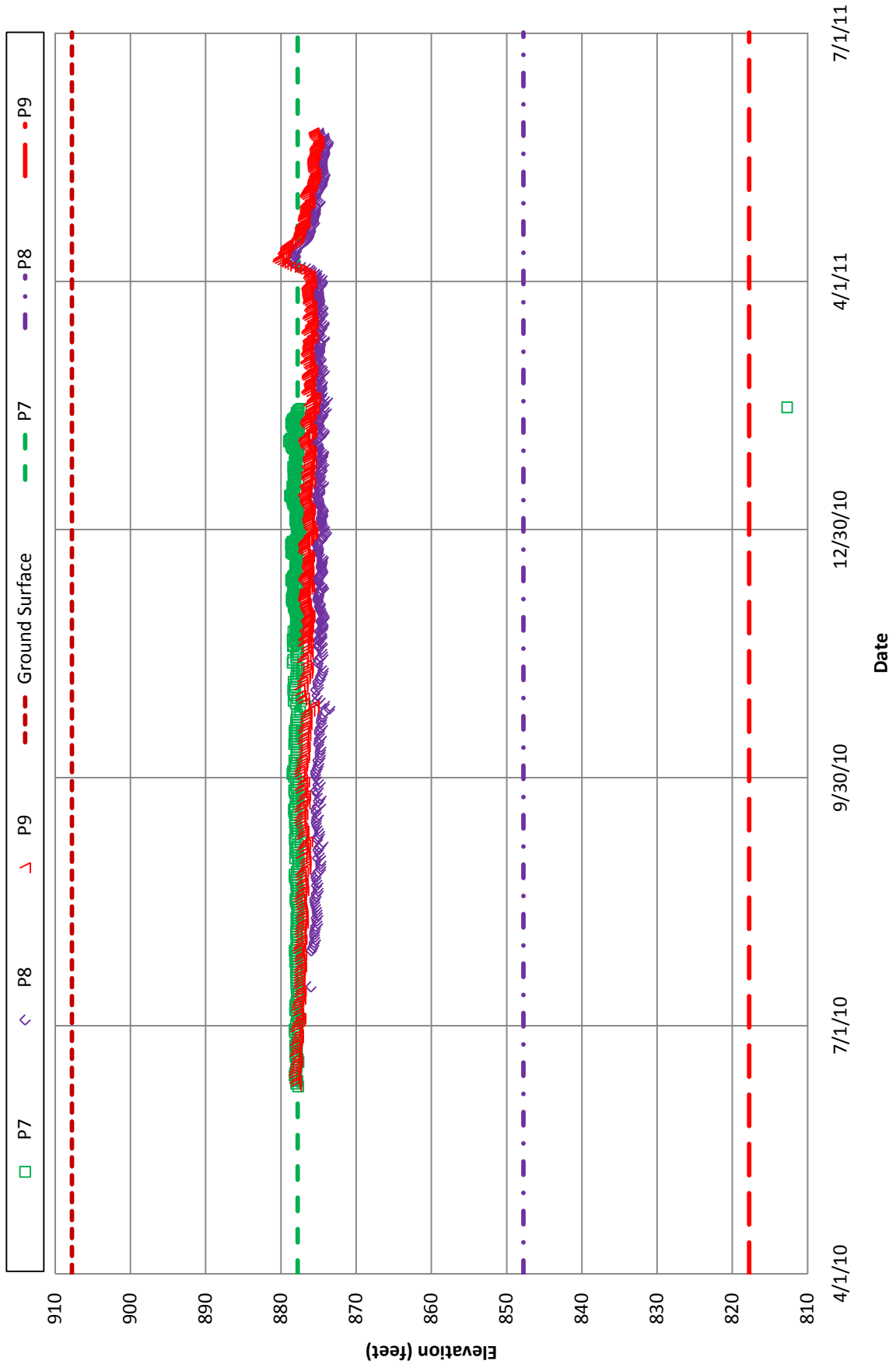
**Fargo-Moorhead Metro Feasibility Study
Piezometers: P-4, P-5 & P-6
MN Diversion, 28th Ave N and 60th St N**



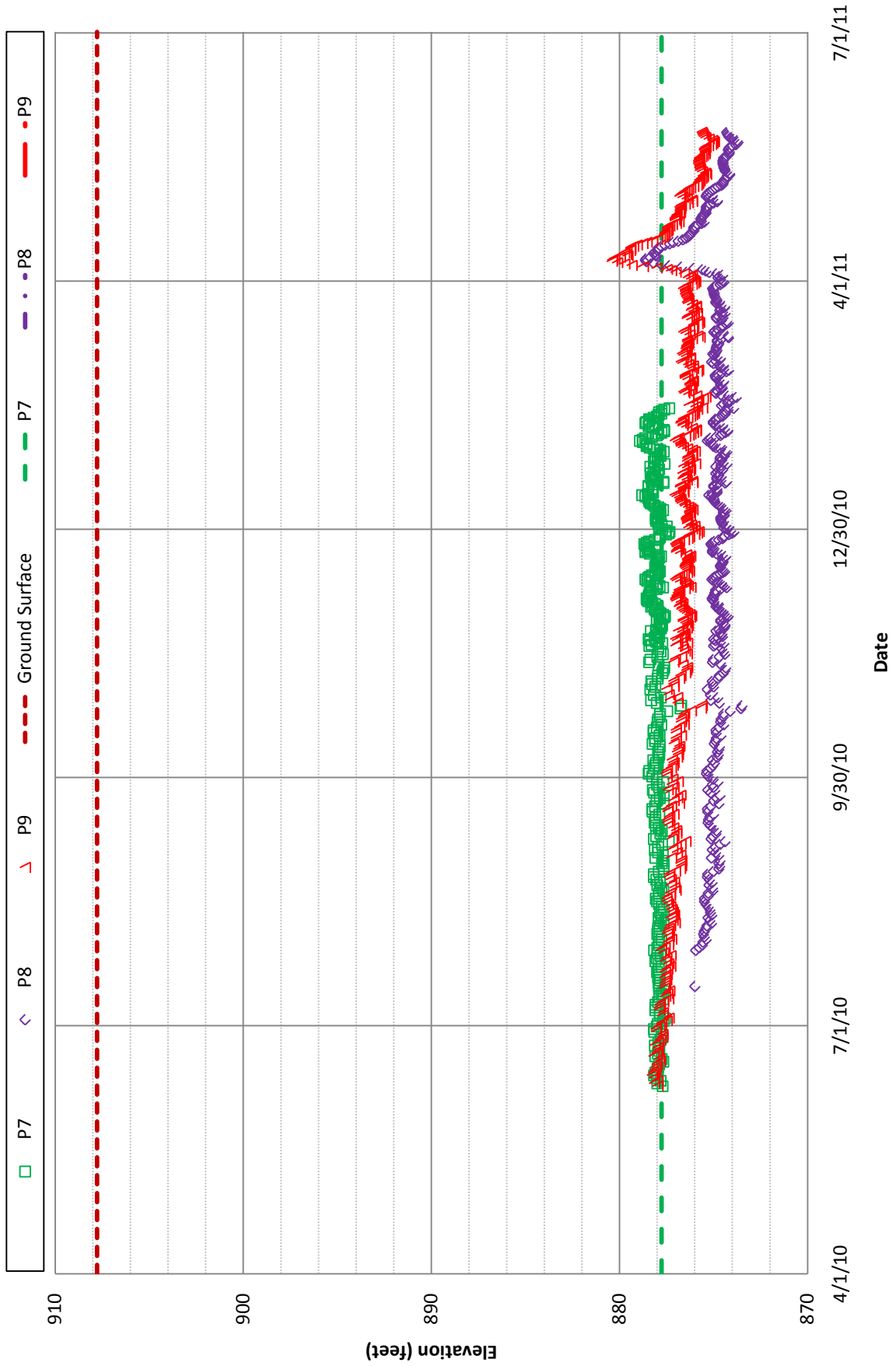
**Fargo-Moorhead Metro Feasibility Study
Piezometers: P4, P5, & P6
MN Diversion, 28th Ave N and 60th St N**



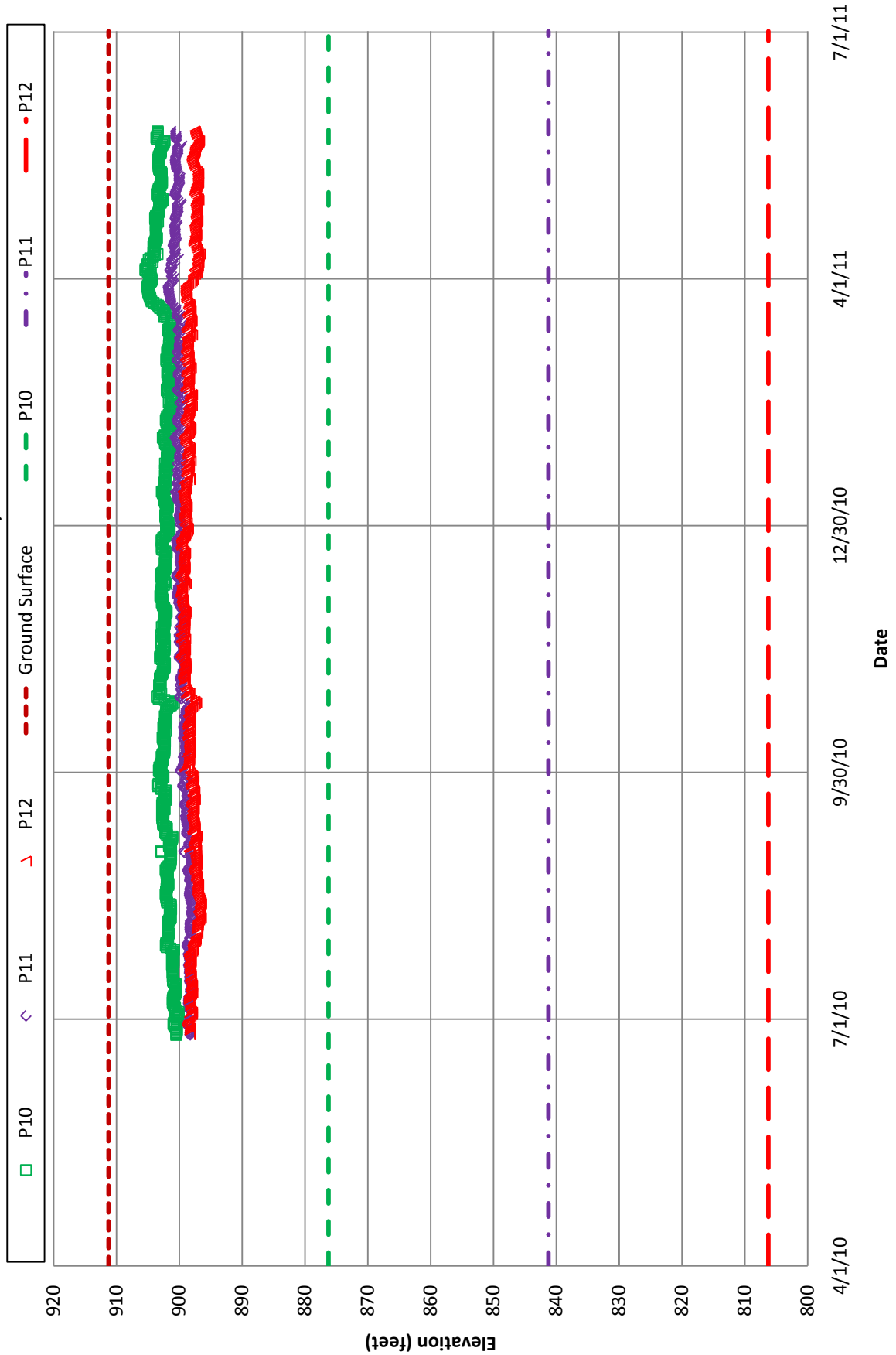
Fargo-Moorhead Metro Feasibility Study
 Piezometers: P7, P8 & P-9
 MN Diversion Red River Control Structure, 10-81M



Fargo-Moorhead Metro Feasibility Study
Piezometers: P7, P8 & P-9
MN Diversion Red River Control Structure, 10-81M

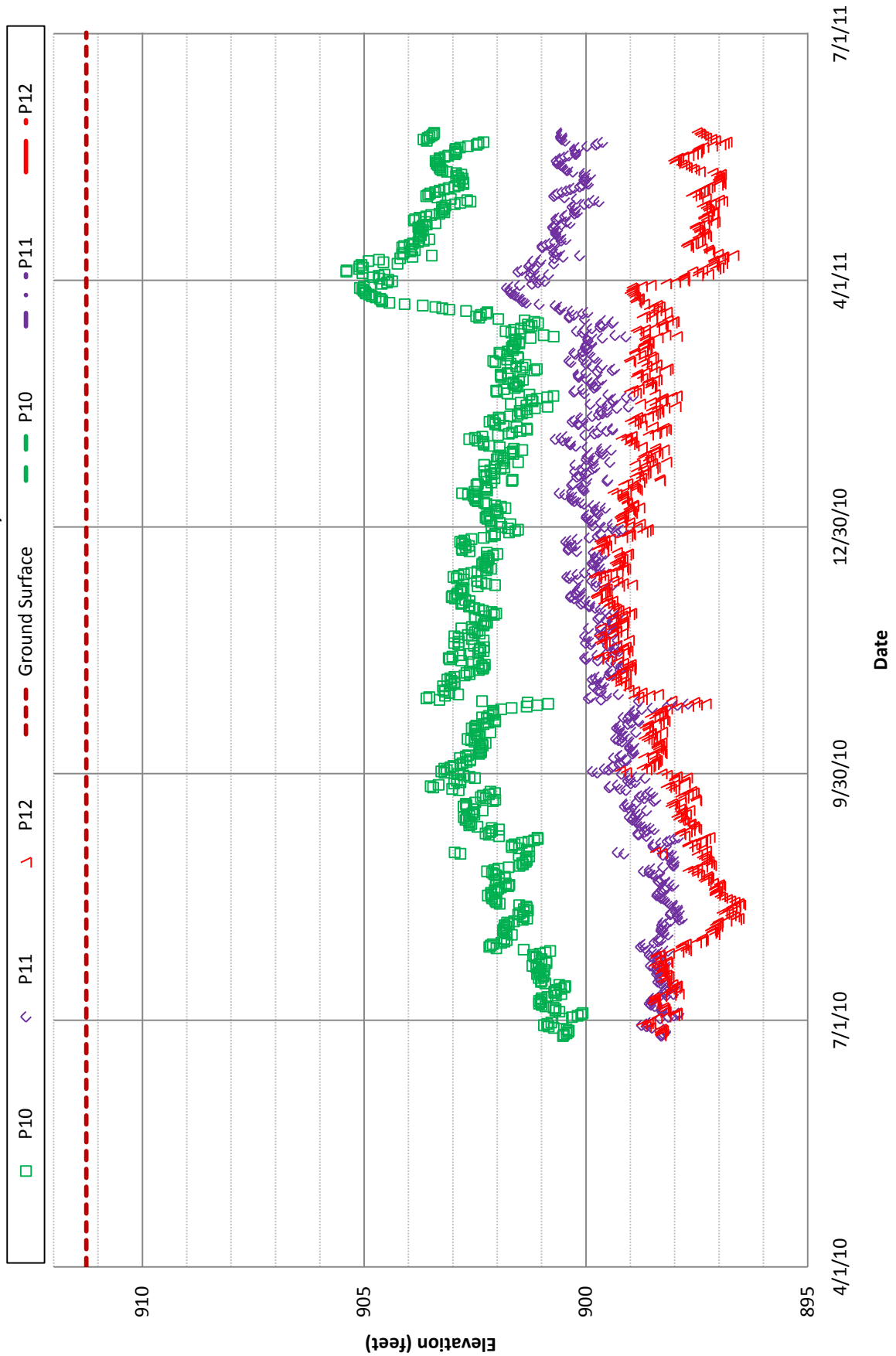


Fargo-Moorhead Metro Feasibility Study
Piezometers: P10, P11 & P12
MN Diversion at 93rd Ave N & 60th St N, 10-88M

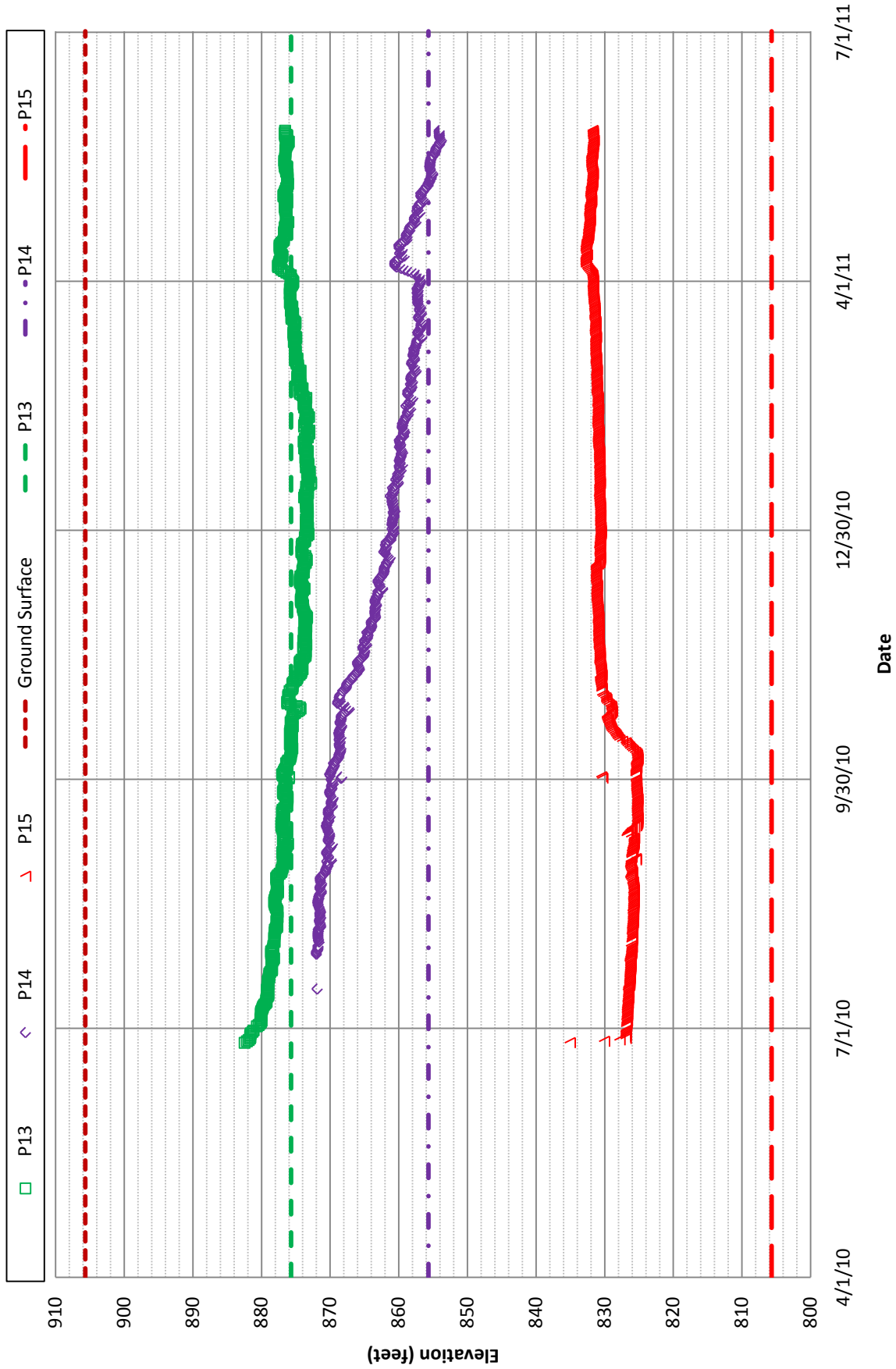


Fargo-Moorhead Metro Feasibility Study
Piezometers: P10, P11 & P12

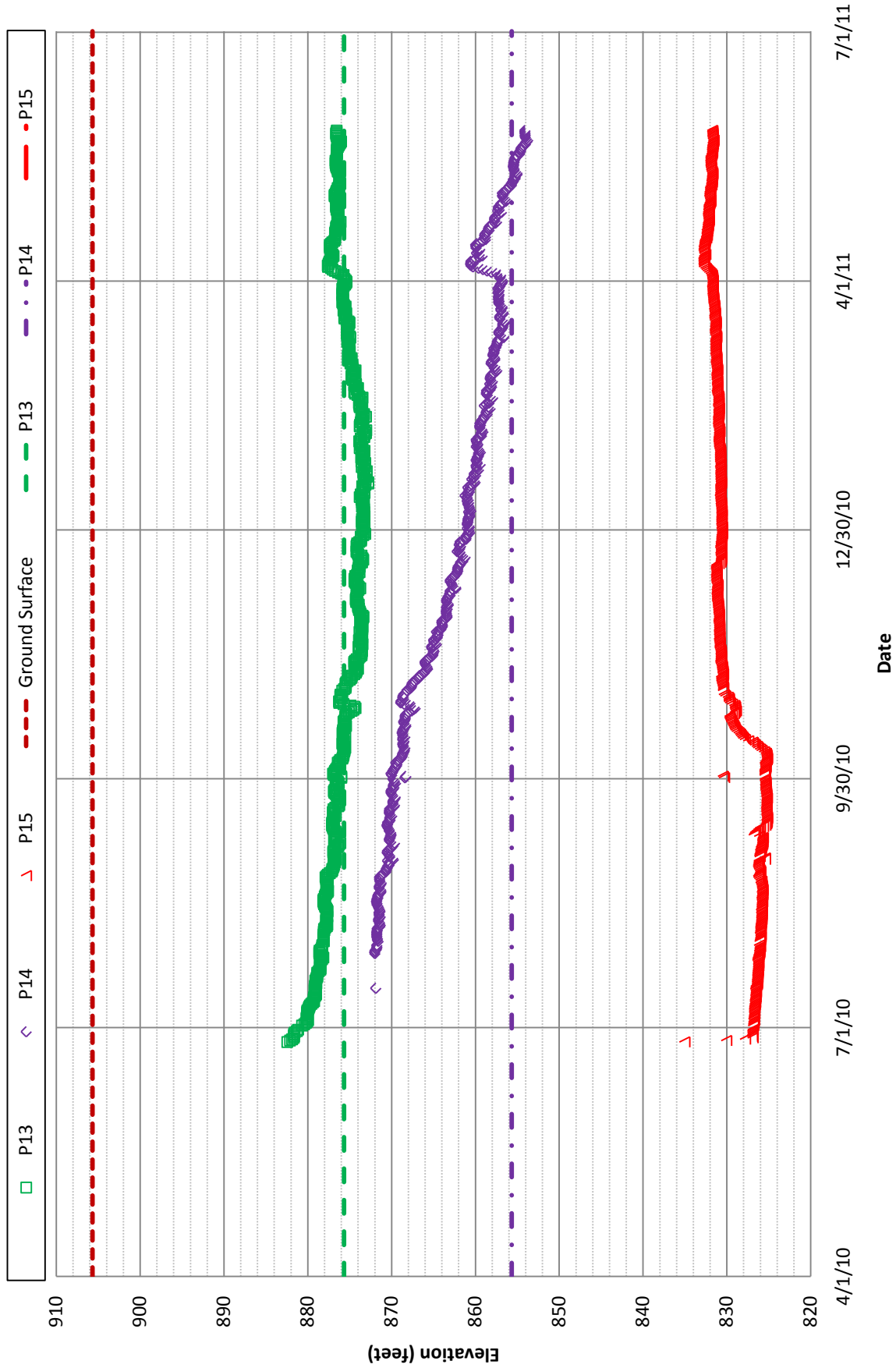
MN Diversion at 93rd Ave N & 60th St N, 10-88M



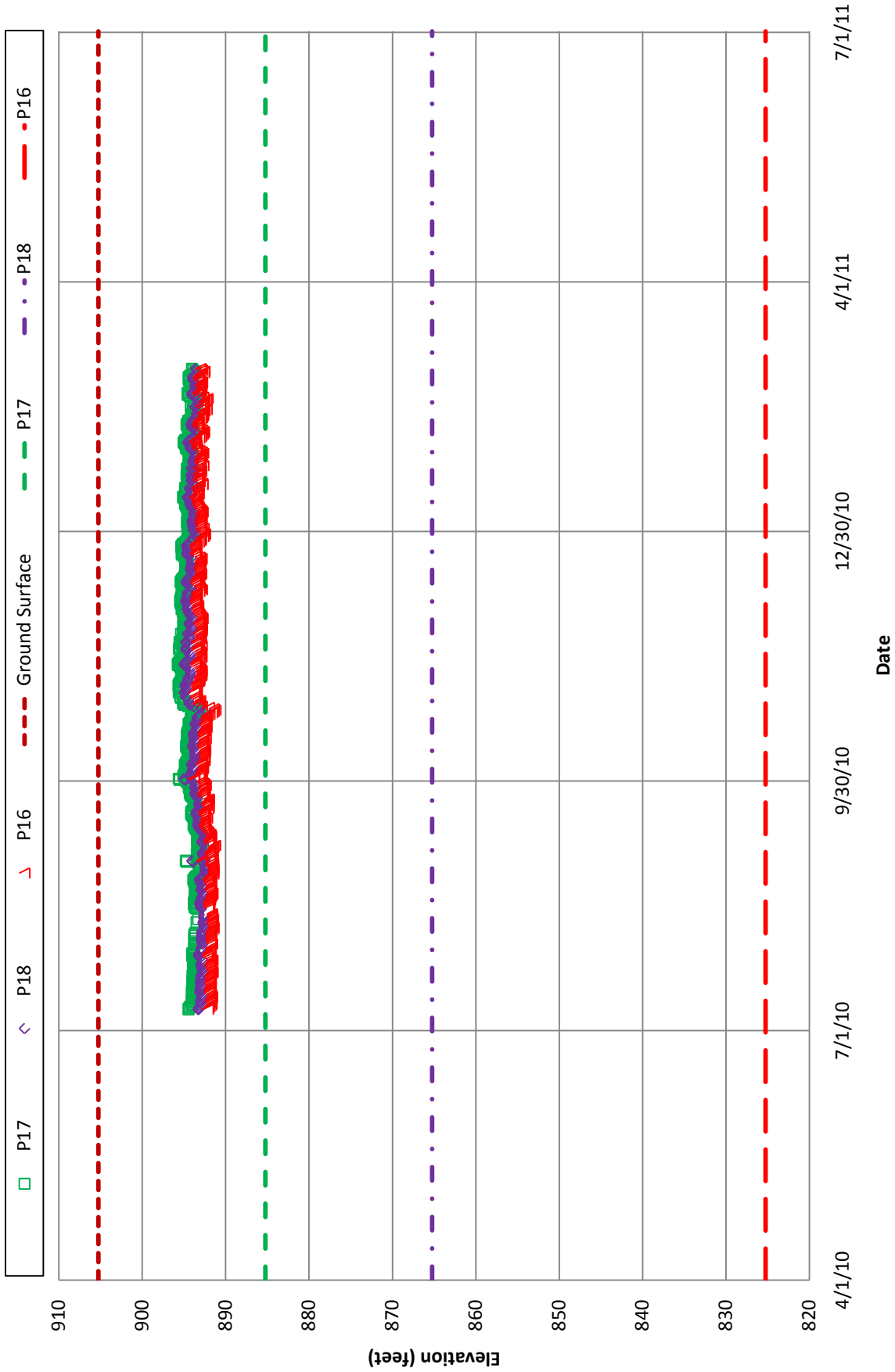
Fargo-Moorhead Metro Feasibility Study
 Piezometers: P13, P14 & P15
 ND Diversion at Wild Rice River, 10-77M



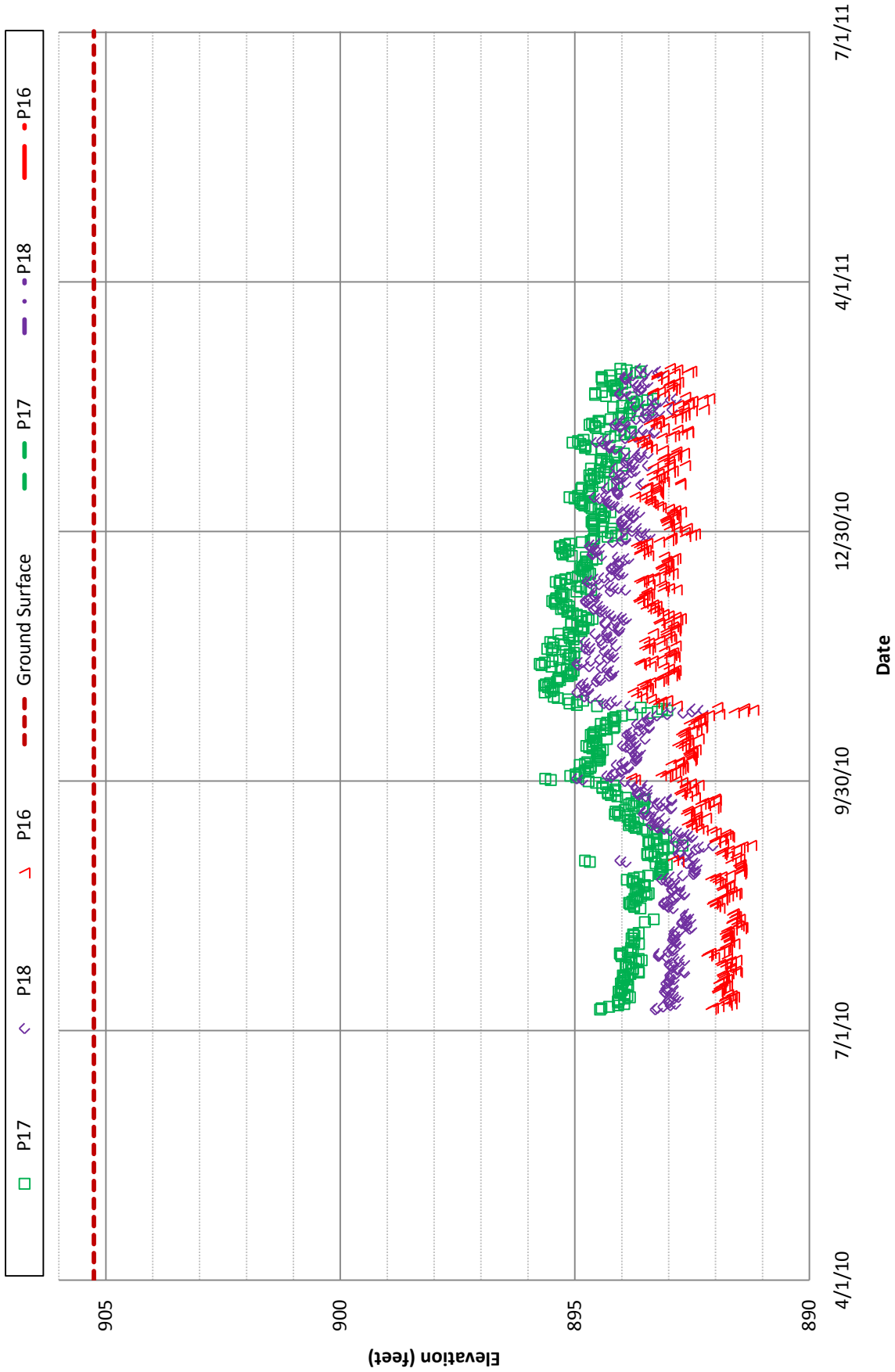
Fargo-Moorhead Metro Feasibility Study
 Piezometers: P13, P14 & P15
 ND Diversion at Wild Rice River, 10-77M



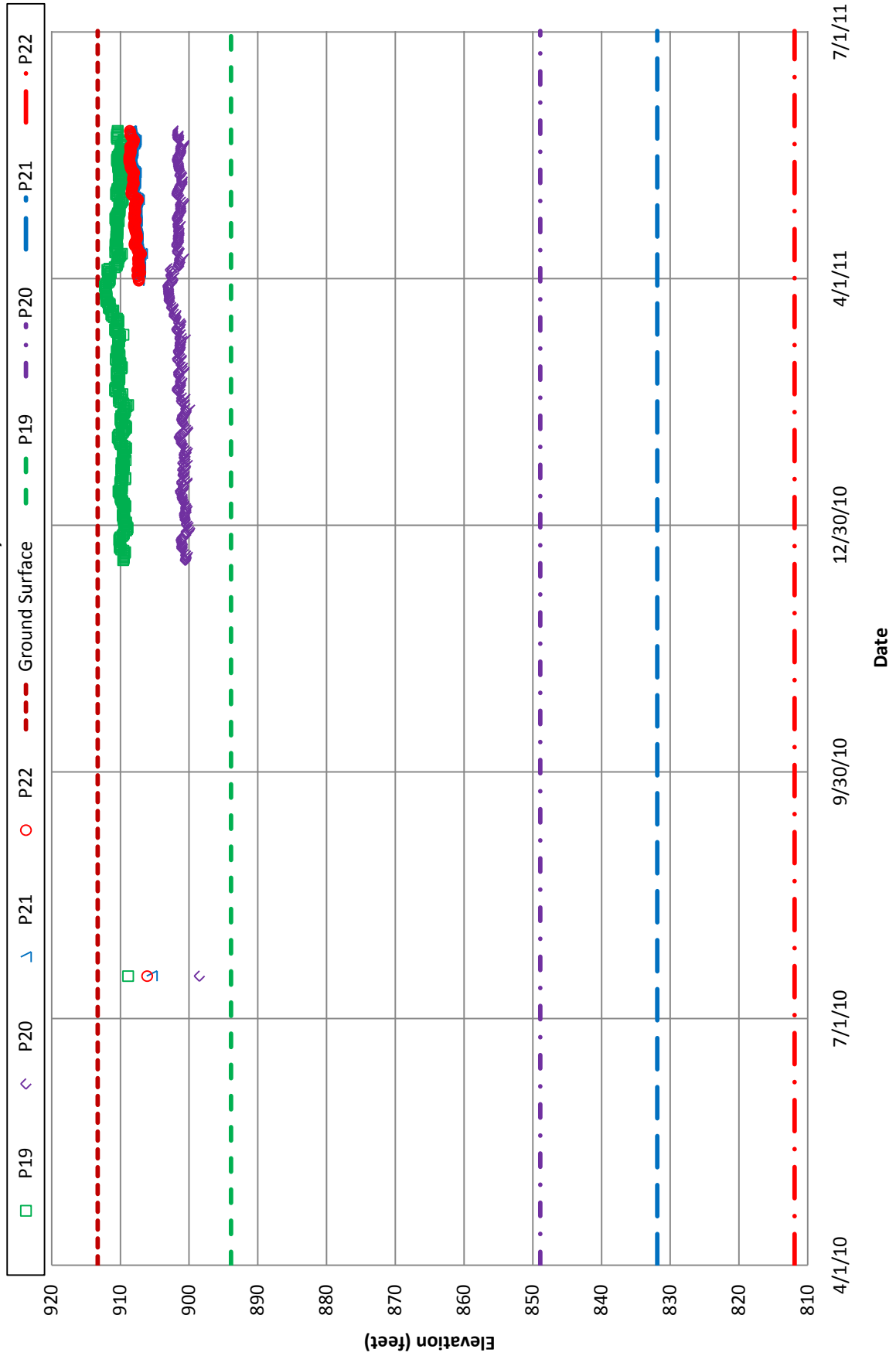
**Fargo-Moorhead Metro Feasibility Study
Piezometers: P16, P17 & P18
ND Diversion Red River Control Structure, 10-79M**



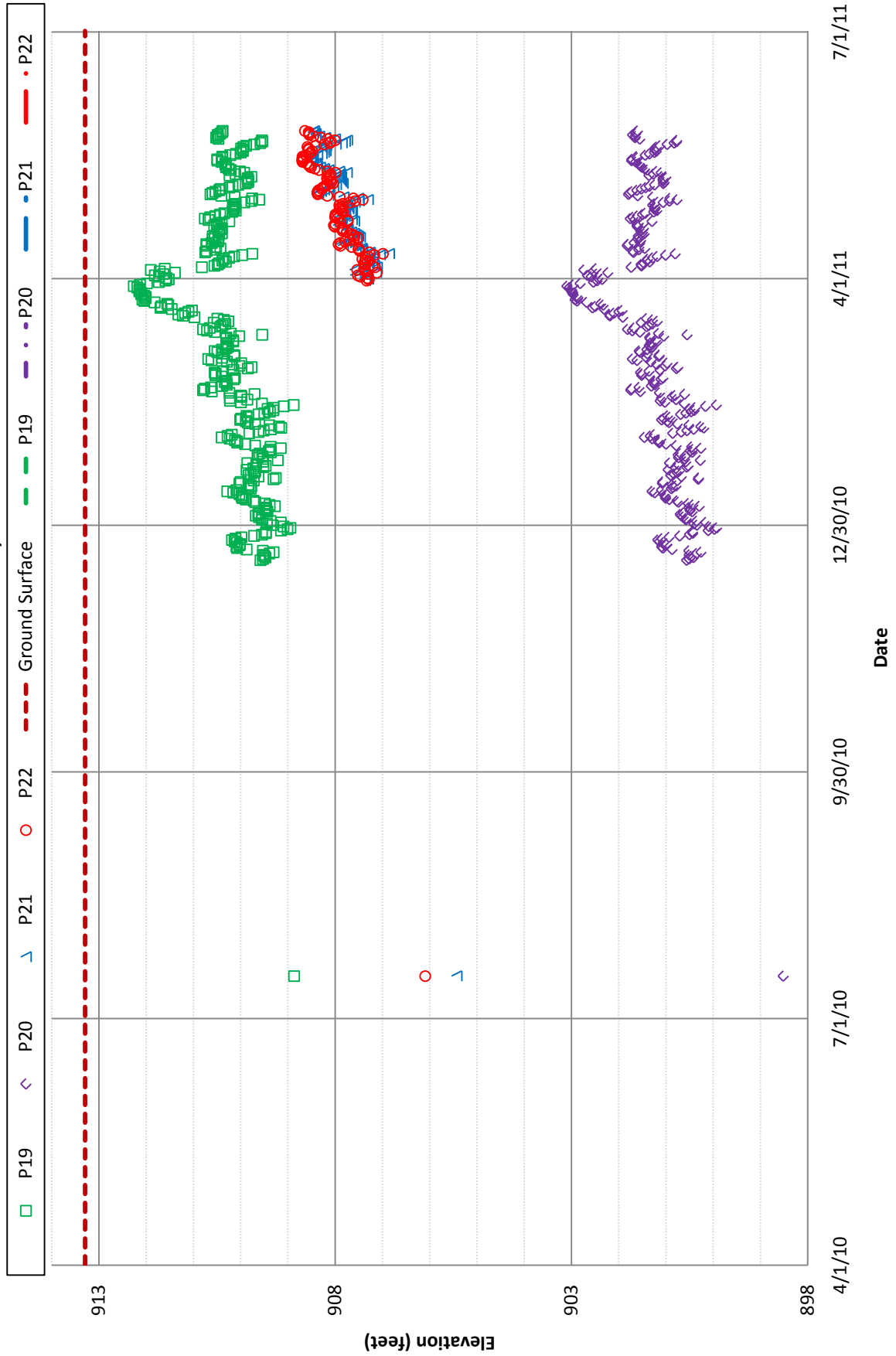
Fargo-Moorhead Metro Feasibility Study
Piezometers: P16, P17 & P18
ND Diversion Red River Control Structure, 10-79M



Fargo-Moorhead Metro Feasibility Study
 Piezometers: P19, P20, P21 & P22
 MN Diversion at HWY 10, 10-106M



**Fargo-Moorhead Metro Feasibility Study
Piezometers: P19, P20, P21 & P22
MN Diversion at HWY 10, 10-106M**



Fargo-Moorhead Metro Feasibility Study
Piezometers: P23
MN Diversion Buffalo Aquifer on 28th Ave N, 10-105M

