



Recommended Contracting Actions

Date: February 21, 2018

Description	Company	Budget Estimate (\$)
<i>Construction Change Orders – Diversion Authority</i>		
WP 4CD – OHB Ring Levee Phases C & D Change Order 03 <ul style="list-style-type: none"> • Add additional project components • Add price adjustment due to changed conditions • Relocate utility lines and stock piles to avoid construction conflicts • Add additional drainage grading • Add expedited freight charges • Add 6.5 days to Milestone 8 	Meyer Contracting	\$38,822.49
Total		\$38,822.49



Technical Advisory Group Recommendation

Meeting Date: 02/13/2018

RECOMMENDATION FOR ACTION:

The Technical Advisory Group has reviewed and recommends approval of the following Contract Action(s).

SUMMARY OF CONTRACTING ACTION:

Per the contract review and approval procedures that were adopted by the Diversion Authority on November 10, 2016, the Owner’s Program Management Consultant (PMC) or Engineer of Record (EOR) shall submit a construction Change Order request to the Technical Advisory Group. The Technical Advisory Group shall review the Change Order request during its next regular meeting after receiving the Change Order request, and make a recommendation as to approval or denial of the Change Order request.

The Owner’s Representative has prepared the following Contract Action(s):

Description	Budget Estimate (\$)
WP-43CD: Meyer Contracting, Inc. <i>Change Order #03</i>	\$38,822.49
<ul style="list-style-type: none"> • Add additional project components • Add price adjustment due to changed conditions • Relocate utility lines and stock piles to avoid construction conflicts • Add additional drainage grading • Add expedited freight charges • Add 6.5 days to Milestone 8 	

Summary of Contracting History and Current Contract Action:

The MFDA awarded the WP-43CD (OHB Ring Levee – Phases C and D) construction contract to Meyer Contracting, Inc. (Contractor) on July 13, 2017.

Since the start of construction, several contract change items have been identified and incorporated into Change Orders. Change Order No. 3 includes additional project components, price adjustment due to changed conditions, relocation of utility lines and stock piles to avoid construction conflicts, additional drainage grading, expedited freight charges, and a Milestone 8 contract time increase of 6.5 days.

Below is a summary of contracting history to date along with the current contracting action.

Original Agreement or Amendment	Budget (\$) Change	Original Project Cost	Revised Project Cost	Project Start	Project Completion	Comments
Original Contract	\$0.00	\$10,399,476.21		09-Aug-17	31-Oct-18	Contract Award to Meyer Consulting, Inc.

Original Agreement or Amendment	Budget (\$) Change	Original Project Cost	Revised Project Cost	Project Start	Project Completion	Comments
Change Order No. 1	\$7,383.47		\$10,406,859.68	09-Aug-17	31-Oct-18	Add heat-shrink sleeves, additional steel pipe bedding, backfill, and time.
Change Order No. 2	\$508,207.56		\$10,915,067.24	09-Aug-17	31-Oct-18	Incorporate WCD-001 and WCD-002; add additional borrow pit stripping; utility work; and a temporary access road.
Change Order No. 3	\$38,822.49		\$10,953,889.73	09-Aug-17	31-Oct-18	Add additional project components, changed conditions price adjustment, relocation of utility lines and stock piles, additional drainage grading, expedited freight charges, and 6.5 days to Milestone 8.

Financial Considerations:

Attached for your review and action is draft CO-03. The PMC and the EOR have reviewed CO-03 and feel the proposed costs and level of effort are reasonable. This change order increases the total Contract Price \$38,822.49. The change order consists of the following items:

1. Additional cathodic protection (COR 8000004): The as designed 16-inch diameter steel casing pipe under the 43CD levee included six (6) cathodic protection anodes and one test station on the south side of the levee, thus having the north three (3) anode test wires buried within the levee prism and conflicting with USACE levee standards.
 - a. To avoid burying these wires within the levee prism, the EOR’s RFI-058 response directed the Contractor to add a second test station on the north side of the casing pipe and connect the three (3) north anode test wires.
 - b. This work was done on a time and material basis and the EOR concurred with Contractor’s submittal.
 - c. This change adds Bid Item 0164, *CO-3: Additional cathodic protection*: lump sum quantity 1.0 LS at the Contract Unit Price of \$372.09 per LS for a price increase of \$372.09.

2. Unable to use Oxbow Drive reclaimed material (COR 9000002): The Contract Documents, Sheet CD301, showed an aggregate subsurface under the Oxbow Drive asphalt and the Contractor intended to reclaim the Oxbow Drive asphalt and aggregate for the base course. Due to the changed condition (lack of adequate existing aggregate base course on Oxbow Drive), this method could not be used. Reclaimed material from other project work features was then used as the aggregate base course.
 - a. The Contractor calculated the additional cost by comparing as-bid costs to as-constructed costs. The additional cost request equates to \$3.25/SY more than the unit price bid. With the increase, the total unit price of aggregate base course is \$6.25/SY.
 - b. This price is in-line with other regional contractor bids for aggregate base course and EOR concurred with Contractor’s submittal.

- c. This change adds Bid Item 0165, *CO-3: Additional aggregate base course*: lump sum quantity 1.0 LS at the Contract Unit Price of \$16,143.52 per LS for a price increase of \$16,143.52.
3. Temporary sanitary sewer bypass (COR 9000017): The project includes the permanent relocation of existing 6-inch and 8-inch diameter sanitary forcemains. The relocation of these sanitary lines was on the critical path of the project schedule and were required prior to completion of the Highway 81 embankment and paving. Due to a hurricane Harvey related casing pipe delivery delay, temporary sanitary sewer pipe and air relief valves were installed to move the active lines out of the Highway 81 embankment construction area and minimize delays.
 - a. The Contractor's original cost proposal for this change was \$32,062.65, and claimed the material delivery delay and additional temporary sewer costs were caused by an act of God and therefore should be reimbursed. The EOR felt the Contractor had control over the material order and delivery schedule and bore some responsibility. The negotiated amount of \$10,000.00 is approximately the cost of the additional material, about a third of the original cost proposal, and the EOR felt this was a reasonable cost share.
 - b. The EOR concurred with the final, negotiated price change of \$10,000.00.
 - c. The Contractor requested a Contract Time extension of four (4) days and these are included in the time extension change item below.
 - d. This change adds Bid Item 0166, *CO-3: Temporary sanitary sewer reroute*: lump sum quantity 1.0 LS at the Contract Unit Price of \$10,000.00 per LS for a price increase of \$10,000.00.
4. Relocate CRW line to avoid 54-inch RCP (COR 9000024): The project includes the installation of a 54-inch diameter Reinforced Concrete Pipe (RCP) storm sewer line parallel and east of Highway 81. The 54-inch RCP installation crosses under an existing 3-inch diameter Cass Rural Water (CRW) and it was assumed that there was adequate clearance between the two pipes. During installation of the 54-inch RCP pipe, it was discovered that the two pipes would conflict and that one would have to be moved.
 - a. The EOR discussed options with CRW to determine the best course of action. It was determined that relocating the 3" line above the 54" RCP would be the best option.
 - b. The EOR directed the Contractor to proceed with the CRW agreed upon plan.
 - c. The EOR agreed that this is a reimbursable cost and concurred with the Contractor's proposed costs.
 - d. The Contractor requested a Contract Time extension of one (1) day and this is included in the time extension change item below.
 - e. This change adds Bid Item 0167, *CO-3: Relocate 3-inch CRW water line*: unit rate quantity of 1.0 LS at the Contract Unit Price of \$5,052.38 per LS for a price increase of \$5,052.38.
5. Move topsoil stockpiles for CRW contractor (COR 9000028): The project includes relocation and replacement of 3-inch and 6-inch diameter water lines with a single, 8-inch diameter water line. This work, outside of the levee footprint, was done by a CRW contractor. When CRW's contractor mobilized to the site to install the new 8" water line, it was determined that the topsoil piles from the north pond excavation area conflicted with the pipe alignment and needed to be moved.
 - a. Since the installation of the pipe and the casing pipe were critical to completing the levee, the

- EOR directed the Contractor to relocate the topsoil piles to accommodate the CRW pipe installation.
- b. The EOR agreed that this is a reimbursable cost and concurred with the Contractor's proposed costs.
 - c. The Contractor requested a Contract Time extension of one (1) day and this is included in the time extension change item below.
 - d. This change adds Bid Item 0168, *CO-3: Move topsoil piles for CRW contractor*: unit rate quantity of 1.0 LS at the Contract Unit Price of \$3,558.72 per LS for a price increase of \$3,558.72.
6. Additional material cost for sanitary forcemain (COR 9000030): The project includes the installation of 2,700 lineal feet of 6-inch and 8-inch diameter PVC forcemain pipe, Unit Price Bid Items 132 and 133. The project required an additional 1,685 lineal feet of both the 6-inch and 8-inch PVC forcemain pipe. The Contractor was notified by their supplier that the additional pipe would cost more due to hurricane Harvey impacts, and requested a unit rate increase of \$0.29 per lineal foot (including 6.25% sales tax) for the additional 6-inch PVC pipe and \$0.60 per lineal foot (including 6.25% sales tax) for the additional 8-inch PVC pipe.
- a. The EOR agreed that this is a reimbursable cost, with the unit price increase, and recommended the Contractor be reimbursed for the additional material cost of the 1,685 lineal feet of 6-inch and 8-inch additional installed pipe.
 - i. The Contractor was paid at the bid price for the additional 1,685 LF of 6-inch and 8-inch PVC under bid items 132 and 133, and this will be accounted for at the end of the project with a final unit price quantity balancing change order.
 - b. This change adds the following bid items:
 - i. Bid Item 0169, *CO-3: Force Main - 6" PVC*: unit rate quantity of 1,685 LF at the Contract Unit Price of \$0.29 per LF for a price increase of \$488.65.
 - ii. Bid Item 0170, *CO-3: Force Main - 8" PVC*: unit rate quantity of 1,685 LF at the Contract Unit Price of \$0.60 per LF for a price increase of \$1,011.00.
7. Additional grading at Schnell and Oxbow Drive (COR 9000033): The project includes grading of the area outside the 43C levee such that it drains to the Red River. The Contractor completed the grading per the Contract Documents. The EOR inspected the work, and directed the Contractor to do additional grading to ensure proper drainage to the Red River.
- a. This work was done on a time and material basis and the EOR concurred with Contractor's submittal.
 - b. The Contractor requested a Contract Time extension of a half (0.5) day and this is included in the time extension change item below.
 - c. This change adds Bid Item 0171, *CO-3: Additional grading at Schnell and Oxbow Drive*: unit rate quantity of 1.0 LS at the Contract Unit Price of \$1,426.48 per LS for a price increase of \$1,426.48.
8. Subcontractor freight charges (COR 9000033): Due to an anticipated project shutdown on January 1, 2018, the EOR directed the Contractor on December 12, 2017 to expedite shipping and installation of a

sluice gate so that the project would have a controllable storm drain closure, should flood conditions be experienced in the spring of 2018. On December 19, 2017, it was determined that one gate was not sufficient to provide the desired level of protection and an attempt was made to cancel the expedited shipping. However, the sluice gate shipment was scheduled and the cost incurred.

- a. The EOR agreed that this is a reasonable cost and recommended payment.
 - b. This change adds Bid Item 0172, *CO-3: Additional sluice gate freight charge*: unit rate quantity of 1.0 LS at the Contract Unit Price of \$769.65 per LS for a price increase of \$769.65.
9. Time Extension: For four (4) of the change items in this change order, the Contractor has requested and the EOR agrees with and recommends the following Contract Time extension:
- a. Milestone 8 - All work, except Pump Station mechanical and electrical components and finishes; bituminous road wear course:
 - a. Add six and a half (6.5) days, extending the completion date to January 8, 2018.

This change amount of \$38,822.49 is included within the FY-2018 MFDA budget.

ATTACHMENT(S):

- 1. Draft Change Order No. 03 with unit price schedule and back-up documentation

Submitted by:



 John Glatzmaier
 CH2M
 Metro Flood Diversion Project

February 13, 2018

 Date

 Nathan Boerboom, Diversion Authority Project
 Manager
 Concur: February 14, 2018 Non-Concur: _____

 Robert Zimmerman, Moorhead City Engineer
 Concur: February 14, 2018 Non-Concur _____

 Mark Bittner, Fargo Director of Engineering
 Concur: _____ Non-Concur: _____

 Jason Benson, Cass County Engineer
 Concur: February 14, 2018 Non-Concur _____

 David Overbo, Clay County Engineer
 Concur: February 14, 2018 Non-Concur: _____

 Jeff Ebsch, Assistant Cass County Engineer, Diversion
 Authority Project Manager
 Concur: February 13, 2018 Non-Concur _____



Change Order No. 03

Date of Issuance:	<u>02/22/2018</u>	Effective Date:	<u>02/22/2018</u>
Owner:	<u>FM-Flood Diversion Authority</u>	Owner's Contract No.:	<u>WP-43CD</u>
Owner's Representative:	<u>CH2M HILL Engineers, Inc.</u>	Owner's Representative Project No.:	<u>435534</u>
Contractor:	<u>Meyer Contracting, Inc</u>	Contractor's Project No.:	<u></u>
Engineer:	<u>Houston-Moore Group, LLC</u>	Work Package No.:	<u>WP-43CD</u>
Project:	<u>OHB-Ring Levee-Phases C and D</u>	Contract Name:	<u>Oxbow-Hickson-Bakke Ring Levee</u>

The Contract is modified as follows upon execution of this Change Order:

Description:

This change order increases the contract price by \$38,822.49 as shown in the attached Change Order No. 3 Unit Price Schedule, and extends the contract time for Milestones 8. The Engineer reviewed these change items and recommends approval. The following items are included in this change order:

1. Additional cathodic protection: The as designed 16-inch diameter steel casing pipe under the 43CD levee included six (6) cathodic protection anodes and one test station on the south side of the levee, thus having the north three (3) anode test wires buried within the levee prism and conflicting with USACE levee standards.
 - a. To avoid burying these wires within the levee prism, the EOR's RFI-058 response directed the Contractor to add a second test station on the north side of the casing pipe and connect the three (3) north anode test wires.
 - b. This change adds Bid Item 0164, *CO-3: Additional cathodic protection*: lump sum quantity 1.0 LS at the Contract Unit Price of \$372.09 per LS for a price increase of \$372.09.
2. Unable to use Oxbow Drive reclaimed material: The Contract Documents, Sheet CD301, showed an aggregate subsurface under the Oxbow Drive asphalt and the Contractor intended to reclaim the Oxbow Drive asphalt and aggregate for the base course. Due to the changed condition (lack of adequate existing aggregate base course on Oxbow Drive), this method could not be used.
 - a. Reclaimed material from other project work features was used as the aggregate base course.
 - b. This change adds Bid Item 0165, *CO-3: Additional aggregate base course*: lump sum quantity 1.0 LS at the Contract Unit Price of \$16,143.52 per LS for a price increase of \$16,143.52.
3. Temporary sanitary sewer bypass: The project includes the permanent relocation of existing 6-inch and 8-inch diameter sanitary forcemains. The relocation of these sanitary lines was on the critical path of the project schedule and were required prior to completion of the Highway 81 embankment and paving. Due to a hurricane Harvey related casing pipe delivery delay, temporarily sanitary sewer pipe and air relief valves were installed to move the active lines out of the Highway 81 embankment construction area and minimize delays.
 - a. Due to a hurricane Harvey related casing pipe delivery delay, temporarily sanitary sewer

pipe and air relief valves were installed to move the active lines out of the Highway 81 embankment construction area and minimize delays.

- b. This change adds Bid Item 0166, *CO-3: Temporary sanitary sewer reroute*: lump sum quantity 1.0 LS at the Contract Unit Price of \$10,000.00 per LS for a price increase of \$10,000.00.
4. Relocate CRW line to avoid 54-inch RCP: The project includes the installation of a 54-inch diameter Reinforced Concrete Pipe (RCP) storm sewer line parallel and east of Highway 81. The 54-inch RCP installation crosses under an existing 3-inch diameter Cass Rural Water (CRW) and it was assumed that there was adequate clearance between the two pipes.
 - a. During installation of the 54-inch RCP pipe, it was discovered that the two pipes would conflict and that relocating the 3-inch water line was the best option.
 - b. This change adds Bid Item 0167, *CO-3: Relocate 3-inch CRW water line*: unit rate quantity of 1.0 LS at the Contract Unit Price of \$5,052.38 per LS for a price increase of \$5,052.38.
5. Move topsoil stockpiles for CRW contractor: The project includes relocation and replacement of 3-inch and 6-inch diameter water lines with a single, 8-inch diameter water line. This work, outside of the levee footprint, was done by a CRW contractor. The CRW contractor was impacted by a topsoil stockpile placed on top of the water line alignment by the Contractor.
 - a. Since the installation of the pipe and the casing pipe were critical to completing the levee, the EOR directed Meyer to relocate the topsoil piles to accommodate the CRW pipe installation.
 - b. This change adds Bid Item 0168, *CO-3: Move topsoil piles for CRW contractor*: unit rate quantity of 1.0 LS at the Contract Unit Price of \$3,558.72 per LS for a price increase of \$3,558.72.
6. Additional material cost for sanitary forcemain: The project includes the installation of 2,700 lineal feet of 6-inch and 8-inch diameter PVC forcemain pipe, Unit Price Bid Items 132 and 133. The project required an additional 1,685 lineal feet of both the 6-inch and 8-inch PVC forcemain pipe. The Contractor was notified by their supplier that the additional pipe would cost more due to hurricane Harvey impacts, and requested a unit rate increase of \$0.29 per lineal foot (including 6.25% sales tax) for the additional 6-inch PVC pipe and \$0.60 per lineal foot (including 6.25% sales tax) for the additional 8-inch PVC pipe.
 - a. The EOR agreed that this is a reimbursable cost, with the unit price increase, and recommended the Contractor be reimbursed for the additional cost of 1,685 lineal feet of 6-inch and 8-inch of additional installed pipe.
 - i. The Contractor was paid at the bid price for the additional 1,685 LF under bid items 132 and 133, and this will be accounted for at the end of the project with a final unit price quantity balancing change order.
 - b. This change adds the following bid items:
 - i. Bid Item 0169, *CO-3: Force Main - 6" PVC*: unit rate quantity of 1,685.0 LF at the Contract Unit Price of \$0.29 per LF for a price increase of \$488.65.
 - ii. Bid Item 0170, *CO-3: Force Main - 8" PVC*: unit rate quantity of 1,685.0 LF at the Contract Unit Price of \$0.60 per LF for a price increase of \$1,011.00.

7. Additional grading at Schnell and Oxbow Drive: The project includes grading of the area outside the 43C levee such that it drains to the Red River. The Contractor completed the grading per the Contract Documents. The EOR inspected the work, and directed the Contractor to do additional grading to ensure proper drainage to the Red River.
 - a. This change adds Bid Item 0171, *CO-3: Additional grading at Schnell and Oxbow Drive*: unit rate quantity of 1.0 LS at the Contract Unit Price of \$1,426.48 per LS for a price increase of \$1,426.48.
8. Subcontractor freight charges: Due to an anticipated project shutdown on January 1, 2018, the EOR directed the Contractor on December 12, 2017 to expedite shipping and installation of a sluice gate so that the project would have a controllable storm drain closure, should flood conditions be experienced in the spring of 2018.
 - a. On December 19, 2017, it was determined that one gate was not sufficient to provide the desired level of protection and an attempt was made to cancel the expedited shipping. However, the sluice gate shipment was scheduled and the cost incurred.
 - b. This change adds Bid Item 0172, *CO-3: Additional sluice gate freight charge*: unit rate quantity of 1.0 LS at the Contract Unit Price of \$769.65 per LS for a price increase of \$769.65.
9. Time Extension: The Contractor has requested and the EOR agrees with and recommends the following Contract Time extension:
 - a. Milestone 8 - All work, except Pump Station mechanical and electrical components and finishes; bituminous road wear course:
 - a. Add six and a half (6.5) days, extending the milestone completion date to January 8, 2018. This includes:
 - i. Four (4) days for the temporary sanitary sewer bypass,
 - ii. One (1) day to relocate the CRW line to avoid 54-inch RCP,
 - iii. One (1) day to move topsoil stockpile for CRW contractor, and
 - iv. Half (0.5) day for the additional grading at Schnell and Oxbow Drive.

Attachments:

1. Change Order No. 3 Unit Price Schedule dated 02/13/2018
2. HMG Change Order No. 3 recommendation memorandum dated 02/13/2018

CHANGE IN CONTRACT PRICE	CHANGE IN CONTRACT TIMES <i>[note changes in Milestones if applicable]</i>
Original Contract Price: 10,399,476.21	Original Contract Times: Substantial Completion: <u>July 31, 2018</u> Ready for Final Payment: <u>October 31, 2018</u>
Contract Price prior to this Change Order: 10,915,067.24	Contract Times prior to this Change Order: Substantial Completion: <u>August 01, 2018</u> Ready for Final Payment: <u>October 31, 2018</u>
[Increase] [Decrease] of this Change Order: 38,822.49	[Increase] [Decrease] of this Change Order:
Contract Price incorporating this Change Order: 10,953,889.73	Contract Times with all approved Change Orders: Substantial Completion: <u>August 01, 2018</u> Ready for Final Payment: <u>October 31, 2018</u>

<p>RECOMMENDED:</p> <p>By: _____ Owner's Representative <small>(Authorized Signature)</small></p> <p>Name: <u>Nathan Boerboom</u> Title: <u>Project Manager</u> Date: _____</p>	<p>ACCEPTED:</p> <p>By: _____ Owner <small>(Authorized Signature)</small></p> <p>Name: <u>Robert W. Wilson</u> Title: <u>Co-Executive Director</u> Date: _____</p>	<p>ACCEPTED:</p> <p>By: _____ Contractor <small>(Authorized Signature)</small></p> <p>Name: <u>Verlyn Schoep</u> Title: <u>President</u> Date: _____</p>
---	--	--

WP-43CD
Oxbow-Hickson-Bakke Ring Levee-Phases C and D

Change Order 3 Unit Price Schedule
 DATE: 2/13/2018



WP-43CD - Oxbow-Hickson-Bakke Ring Levee-Phases C and D											
ITEM	DESCRIPTION	UNIT	Current Budget			Net Change			New Budget		
			QUANTITY	UNIT PRICE	AMOUNT	QUANTITY	UNIT PRICE	AMOUNT	QUANTITY	UNIT PRICE	AMOUNT
0001	Mobilization	LS	1	\$544,802.00	\$ 544,802.00				1	\$544,802.00	\$ 544,802.00
0002	Demolition	LS	1	\$324,840.00	\$ 324,840.00				1	\$324,840.00	\$ 324,840.00
0003	Clearing and Grubbing	LS	1	\$29,057.00	\$ 29,057.00				1	\$29,057.00	\$ 29,057.00
0004	Temporary Erosion Protection	LS	1	\$66,363.00	\$ 66,363.00				1	\$66,363.00	\$ 66,363.00
0005	Traffic Control	LS	1	\$8,422.00	\$ 8,422.00				1	\$8,422.00	\$ 8,422.00
0006	Care of Water	LS	1	\$44,037.00	\$ 44,037.00				1	\$44,037.00	\$ 44,037.00
0007	Health and Safety	LS	1	\$228,608.00	\$ 228,608.00				1	\$228,608.00	\$ 228,608.00
0008	Work Limit Fencing	LF	33,682	\$1.50	\$ 50,523.00				33682	\$1.50	\$ 50,523.00
0009	Turf Establishment - Zone 1	AC	26	\$304.50	\$ 7,977.90				26	\$304.50	\$ 7,977.90
0010	Turf Establishment - Zone 3	AC	33	\$1,254.00	\$ 41,758.20				33	\$1,254.00	\$ 41,758.20
0011	Turf Establishment - Zone 4	AC	10	\$1,452.00	\$ 14,520.00				10	\$1,452.00	\$ 14,520.00
0012	Topsoil Stripping	SY	143,910	\$1.20	\$ 172,692.00				143910	\$1.20	\$ 172,692.00
0013	Excavation – Common (North Pond)	CY	158,915	\$5.50	\$ 874,032.50				158915	\$5.50	\$ 874,032.50
0014	Inspection Trench	LF	5,274	\$11.00	\$ 58,014.00				5274	\$11.00	\$ 58,014.00
0015	Topsoil	SY	116,850	\$1.00	\$ 116,850.00				116850	\$1.00	\$ 116,850.00
0016	Aggregate Base - Levee top	LF	5,306	\$13.25	\$ 70,304.50				5306	\$13.25	\$ 70,304.50
0017	Aggregate Base - Pump Station Access Road	LF	1,450	\$24.00	\$ 34,800.00				1450	\$24.00	\$ 34,800.00
0018	Low Flow Channel And Pond Access	LF	1,742	\$160.00	\$ 278,720.00				1742	\$160.00	\$ 278,720.00
0019	Levee Access Gate	EA	2	\$12,216.00	\$ 24,432.00				2	\$12,216.00	\$ 24,432.00
0020	Installation of Electrical Conduit furnished by others	LF	855	\$2.90	\$ 2,479.50				855	\$2.90	\$ 2,479.50
0021	Imported fill for backfilling 829 Riverbend Rd	CY	1,500	\$7.30	\$ 10,950.00				1500	\$7.30	\$ 10,950.00
0022	Remove and Replace Unstable Subgrade Material	CY	500	\$74.00	\$ 37,000.00				500	\$74.00	\$ 37,000.00
0023	Gravity Drain Inlet Structure	LS	1	\$59,057.00	\$ 59,057.00				1	\$59,057.00	\$ 59,057.00

WP-43CD - Oxbow-Hickson-Bakke Ring Levee-Phases C and D											
ITEM	DESCRIPTION	UNIT	Current Budget			Net Change			New Budget		
			QUANTITY	UNIT PRICE	AMOUNT	QUANTITY	UNIT PRICE	AMOUNT	QUANTITY	UNIT PRICE	AMOUNT
0024	Pump Station Structure	LS	1	\$1,392,662.00	\$ 1,392,662.00				1	\$1,392,662.00	\$ 1,392,662.00
0025	Pump Station Process Equipment	LS	1	\$60,000.00	\$ 60,000.00				1	\$60,000.00	\$ 60,000.00
0026	Forcemain Piping	LF	575	\$262.50	\$ 150,937.50				575	\$262.50	\$ 150,937.50
0027	Gatewell	LS	1	\$561,313.00	\$ 561,313.00				1	\$561,313.00	\$ 561,313.00
0028	Storm Sewer RCP w/ Catch Basins, Manholes and Connections	LS	1	\$852,711.00	\$ 852,711.00				1	\$852,711.00	\$ 852,711.00
0029	Transition Structure 1 and Appurtenances	LS	1	\$25,898.00	\$ 25,898.00				1	\$25,898.00	\$ 25,898.00
0030	Pre-Construction Pipe Repair	SF	1,000	\$4.40	\$ 4,400.00				1000	\$4.40	\$ 4,400.00
0031	Install Storm Sewer 42-inch Steel Pipe Sections Furnished by Others	LS	1	\$97,059.00	\$ 97,059.00				1	\$97,059.00	\$ 97,059.00
0032	Cathodic Protection System for Steel Pipe	LS	1	\$31,173.00	\$ 31,173.00				1	\$31,173.00	\$ 31,173.00
0033	Transition Structure 2 and Appurtenances	LS	1	\$26,265.00	\$ 26,265.00				1	\$26,265.00	\$ 26,265.00
0034	Gravity Drain Outlet Structure with Duckbill Check Valve	LS	1	\$129,038.00	\$ 129,038.00				1	\$129,038.00	\$ 129,038.00
0035	Excavation – Common (Gravity Outfall)	CY	44,500	\$6.90	\$ 307,050.00				44500	\$6.90	\$ 307,050.00
0036	Riprap with Filter	TN	1,500	\$114.00	\$ 171,000.00				1500	\$114.00	\$ 171,000.00
0037	Pump Station Electrical System	LS	1	\$488,000.00	\$ 488,000.00				1	\$488,000.00	\$ 488,000.00
0038	Pump Station Communications System	LS	1	\$1,600.00	\$ 1,600.00				1	\$1,600.00	\$ 1,600.00
0039	Gatewell Electrical System	LS	1	\$12,000.00	\$ 12,000.00				1	\$12,000.00	\$ 12,000.00
0040	Pump Station HVAC Mechanical System	LS	1	\$30,303.00	\$ 30,303.00				1	\$30,303.00	\$ 30,303.00
0041	Topsoil Stripping	SY	5,950	\$1.90	\$ 11,305.00				5950	\$1.90	\$ 11,305.00
0042	Sign - Remove & Reinstall	EA	8	\$100.00	\$ 800.00				8	\$100.00	\$ 800.00
0043	Mailbox - Remove & Reinstall	EA	5	\$315.00	\$ 1,575.00				5	\$315.00	\$ 1,575.00
0044	Temporary Mailbox	LS	1	\$1,575.00	\$ 1,575.00				1	\$1,575.00	\$ 1,575.00
0045	Curb & Gutter - Remove	LF	3,550	\$0.95	\$ 3,372.50				3550	\$0.95	\$ 3,372.50
0046	Asphalt - Remove	SY	4,800	\$4.50	\$ 21,600.00				4800	\$4.50	\$ 21,600.00
0047	Concrete Driveway - Remove	SY	205	\$6.00	\$ 1,230.00				205	\$6.00	\$ 1,230.00
0048	Asphalt Driveway - Remove	SY	45	\$8.80	\$ 396.00				45	\$8.80	\$ 396.00
0049	Sanitary Sewer - Remove	LF	1,380	\$12.00	\$ 16,560.00				1380	\$12.00	\$ 16,560.00

WP-43CD - Oxbow-Hickson-Bakke Ring Levee-Phases C and D											
ITEM	DESCRIPTION	UNIT	Current Budget			Net Change			New Budget		
			QUANTITY	UNIT PRICE	AMOUNT	QUANTITY	UNIT PRICE	AMOUNT	QUANTITY	UNIT PRICE	AMOUNT
0050	Sanitary Sewer Manhole - Remove	EA	2	\$515.50	\$ 1,031.00				2	\$515.50	\$ 1,031.00
0051	Sanitary Sewer - 8" PVC SDR 35	LF	2,175	\$58.50	\$ 127,237.50				2175	\$58.50	\$ 127,237.50
0052	Sanitary Sewer Main - Televis	LF	2,175	\$1.50	\$ 3,262.50				2175	\$1.50	\$ 3,262.50
0053	Steel Casing - 10"	LF	32	\$123.00	\$ 3,936.00				32	\$123.00	\$ 3,936.00
0054	Sanitary Sewer Service Connection	EA	7	\$2,770.00	\$ 19,390.00				7	\$2,770.00	\$ 19,390.00
0055	Sanitary Sewer – Connect to Existing	EA	2	\$1,905.00	\$ 3,810.00				2	\$1,905.00	\$ 3,810.00
0056	Sanitary Sewer Manhole	EA	12	\$6,602.00	\$ 79,224.00				12	\$6,602.00	\$ 79,224.00
0057	Water Main – Remove	LF	460	\$8.90	\$ 4,094.00				460	\$8.90	\$ 4,094.00
0058	Water Main – Connect to Existing	EA	1	\$2,730.00	\$ 2,730.00				1	\$2,730.00	\$ 2,730.00
0059	Water Main – 6"	LF	10	\$103.00	\$ 1,030.00				10	\$103.00	\$ 1,030.00
0060	Hydrant – Remove & Replace	EA	1	\$6,561.00	\$ 6,561.00				1	\$6,561.00	\$ 6,561.00
0061	Gate Valve & Box – 6"	EA	1	\$1,698.00	\$ 1,698.00				1	\$1,698.00	\$ 1,698.00
0062	Temporary Bypass Pumping	LS	1	\$3,781.00	\$ 3,781.00				1	\$3,781.00	\$ 3,781.00
0063	Subgrade Preparation	SY	4,970	\$6.80	\$ 33,796.00				4970	\$6.80	\$ 33,796.00
0064	Reinforcement Fabric	SY	4,970	\$1.30	\$ 6,461.00				4970	\$1.30	\$ 6,461.00
0065	Aggregate Base Course - 7"	SY	4,970	\$3.00	\$ 14,910.00				4970	\$3.00	\$ 14,910.00
0066	Perforated PVC Drain Tile - 4"	LF	2,980	\$5.30	\$ 15,794.00				2980	\$5.30	\$ 15,794.00
0067	Sump Pump - Connect to Drain Tile	EA	6	\$365.50	\$ 2,193.00				6	\$365.50	\$ 2,193.00
0068	Curb & Gutter - 24" Highback	LF	2,820	\$16.50	\$ 46,530.00				2820	\$16.50	\$ 46,530.00
0069	Curb & Gutter - 24" Mountable	LF	160	\$24.50	\$ 3,920.00				160	\$24.50	\$ 3,920.00
0070	Asphalt Base Course - 5"	SY	3,920	\$19.75	\$ 77,420.00				3920	\$19.75	\$ 77,420.00
0071	Asphalt Wear Course - 2"	SY	3,920	\$8.50	\$ 33,320.00				3920	\$8.50	\$ 33,320.00
0072	Concrete Driveway - 6"	SY	250	\$64.75	\$ 16,187.50				250	\$64.75	\$ 16,187.50
0073	Topsoil Replacement	SY	7,310	\$2.30	\$ 16,813.00				7310	\$2.30	\$ 16,813.00
0074	Turf Establishment - Zone 2	AC	1.5	\$3,026.00	\$ 4,539.00				2	\$3,026.00	\$ 4,539.00
0075	Temporary Access	LS	1	\$12,106.00	\$ 12,106.00				1	\$12,106.00	\$ 12,106.00

WP-43CD - Oxbow-Hickson-Bakke Ring Levee-Phases C and D

ITEM	DESCRIPTION	UNIT	Current Budget			Net Change			New Budget		
			QUANTITY	UNIT PRICE	AMOUNT	QUANTITY	UNIT PRICE	AMOUNT	QUANTITY	UNIT PRICE	AMOUNT
0076	Portable Traffic Signals	EA	2	\$6,000.00	\$ 12,000.00				2	\$6,000.00	\$ 12,000.00
0077	Storm Sewer 15-inch RCP	LF	211	\$49.25	\$ 10,391.75				211	\$49.25	\$ 10,391.75
0078	Storm Sewer 18-inch RCP	LF	13	\$65.75	\$ 854.75				13	\$65.75	\$ 854.75
0079	Storm Sewer 24-inch RCP	LF	209	\$86.50	\$ 18,078.50				209	\$86.50	\$ 18,078.50
0080	Storm Sewer 27-inch RCP	LF	617	\$103.50	\$ 63,859.50				617	\$103.50	\$ 63,859.50
0081	Storm Sewer 30-inch RCP	LF	291	\$113.50	\$ 33,028.50				291	\$113.50	\$ 33,028.50
0082	Storm Sewer 36-inch RCP	LF	454	\$155.50	\$ 70,597.00				454	\$155.50	\$ 70,597.00
0083	Storm Sewer 42-inch RCP	LF	34	\$210.50	\$ 7,157.00				34	\$210.50	\$ 7,157.00
0084	Storm Sewer 54-inch RCP	LF	935	\$307.00	\$ 287,045.00				935	\$307.00	\$ 287,045.00
0085	Storm Sewer 66-inch RCP	LF	352	\$417.50	\$ 146,960.00				352	\$417.50	\$ 146,960.00
0086	Storm Sewer 72-inch RCP	LF	97	\$482.50	\$ 46,802.50				97	\$482.50	\$ 46,802.50
0087	Flared End Section – 72” RCP	EA	1	\$3,726.00	\$ 3,726.00				1	\$3,726.00	\$ 3,726.00
0088	Trash Rack – 72”	EA	1	\$3,952.00	\$ 3,952.00				1	\$3,952.00	\$ 3,952.00
0089	Storm Sewer Control Structure – 60-inch Precast	EA	1	\$21,712.00	\$ 21,712.00				1	\$21,712.00	\$ 21,712.00
0090	Storm Sewer Manhole – 60-inch Precast	EA	6	\$7,364.00	\$ 44,184.00				6	\$7,364.00	\$ 44,184.00
0091	Storm Sewer Manhole – 72-inch Precast	EA	3	\$9,922.00	\$ 29,766.00				3	\$9,922.00	\$ 29,766.00
0092	Storm Sewer Manhole – 96-inch Precast	EA	1	\$15,564.00	\$ 15,564.00				1	\$15,564.00	\$ 15,564.00
0093	Junction Storm Sewer Manhole – 144-inch Precast	EA	2	\$31,801.00	\$ 63,602.00				2	\$31,801.00	\$ 63,602.00
0094	Storm Sewer Curb Inlets – 2' x 3'	EA	8	\$3,084.00	\$ 24,672.00				8	\$3,084.00	\$ 24,672.00
0095	Storm Sewer - Remove	LF	2,280	\$18.50	\$ 42,180.00				2280	\$18.50	\$ 42,180.00
0096	Storm Sewer Manhole - Remove	EA	2	\$564.00	\$ 1,128.00				2	\$564.00	\$ 1,128.00
0097	Storm Sewer Catch Basin - Remove	EA	8	\$564.00	\$ 4,512.00				8	\$564.00	\$ 4,512.00
0098	Storm Sewer – Connect to Existing	EA	1	\$1,808.00	\$ 1,808.00				1	\$1,808.00	\$ 1,808.00
0099	Removal Of Pavement	TON	11,410	\$6.80	\$ 77,588.00				11410	\$6.80	\$ 77,588.00
0100	Removal Of Culverts-All Types & Sizes	LF	136	\$13.75	\$ 1,870.00				136	\$13.75	\$ 1,870.00
0101	Common Excavation-Type A	CY	8,411	\$3.20	\$ 26,915.20				8411	\$3.20	\$ 26,915.20

WP-43CD - Oxbow-Hickson-Bakke Ring Levee-Phases C and D

ITEM	DESCRIPTION	UNIT	Current Budget			Net Change			New Budget		
			QUANTITY	UNIT PRICE	AMOUNT	QUANTITY	UNIT PRICE	AMOUNT	QUANTITY	UNIT PRICE	AMOUNT
0102	Topsoil	CY	6,812	\$5.80	\$ 39,509.60				6812	\$5.80	\$ 39,509.60
0103	Borrow-Excavation	CY	59,746	\$3.90	\$ 233,009.40				59746	\$3.90	\$ 233,009.40
0104	Water	M GAL	883	\$15.00	\$ 13,245.00				883	\$15.00	\$ 13,245.00
0105	Subgrade Preparation- Type A	STA	4	\$882.00	\$ 3,528.00				4	\$882.00	\$ 3,528.00
0106	Seeding Class II	ACRE	10	\$472.00	\$ 4,918.24				10	\$472.00	\$ 4,918.24
0107	Temporary Cover Crop	ACRE	10	\$127.00	\$ 1,323.34				10	\$127.00	\$ 1,323.34
0108	Straw Mulch	ACRE	21	\$304.50	\$ 6,345.78				21	\$304.50	\$ 6,345.78
0109	Fiber Rolls 12in	LF	1,160	\$2.30	\$ 2,668.00				1160	\$2.30	\$ 2,668.00
0110	Remove Fiber Rolls 12in	LF	385	\$0.35	\$ 134.75				385	\$0.35	\$ 134.75
0111	Salvaged Base Course	TON	9,439	\$18.50	\$ 174,621.50				9439	\$18.50	\$ 174,621.50
0112	Tack Coat	GAL	1,366	\$4.90	\$ 6,693.40				1366	\$4.90	\$ 6,693.40
0113	Superpave FAA 42	TON	5,028	\$41.00	\$ 206,148.00				5028	\$41.00	\$ 206,148.00
0114	Cored Sample	EA	21	\$85.00	\$ 1,785.00				21	\$85.00	\$ 1,785.00
0115	Pg. 58-28 Asphalt Cement	TON	302	\$450.00	\$ 135,900.00				302	\$450.00	\$ 135,900.00
0116	Traffic Control Signs	UNIT	3,923	\$2.00	\$ 7,846.00				3923	\$2.00	\$ 7,846.00
0117	Type III Barricade	EA	23	\$115.00	\$ 2,645.00				23	\$115.00	\$ 2,645.00
0118	Delineator Drums	EA	25	\$10.00	\$ 250.00				25	\$10.00	\$ 250.00
0119	Tubular Markers	EA	81	\$3.00	\$ 243.00				81	\$3.00	\$ 243.00
0120	Traffic Control	LSUM	1	\$3,496.00	\$ 3,496.00				1	\$3,496.00	\$ 3,496.00
0121	Portable Changeable Message Sign	EA	2	\$3,000.00	\$ 6,000.00				2	\$3,000.00	\$ 6,000.00
0122	Geosynthetic Material Type R1	SY	16,100	\$1.40	\$ 22,540.00				16100	\$1.40	\$ 22,540.00
0123	Pipe Conc Reinf 24in CL III	LF	110	\$88.75	\$ 9,762.50				110	\$88.75	\$ 9,762.50
0124	End Sect-Conc Reinf 24in	EA	2	\$1,017.00	\$ 2,034.00				2	\$1,017.00	\$ 2,034.00
0125	Pipe Corr Steel .0641n 24in	LF	102	\$73.00	\$ 7,446.00				102	\$73.00	\$ 7,446.00
0126	End Sect Corr Steel .0641n 24in	EA	4	\$372.00	\$ 1,488.00				4	\$372.00	\$ 1,488.00
0127	Flat Sheet For Signs-Type XI Refl Sheeting	SF	6	\$22.00	\$ 138.60				6	\$22.00	\$ 138.60

WP-43CD - Oxbow-Hickson-Bakke Ring Levee-Phases C and D

ITEM	DESCRIPTION	UNIT	Current Budget			Net Change			New Budget		
			QUANTITY	UNIT PRICE	AMOUNT	QUANTITY	UNIT PRICE	AMOUNT	QUANTITY	UNIT PRICE	AMOUNT
0128	Steel Galv Posts-Telescoping Perforated Tube	LF	17	\$16.00	\$ 270.40				17	\$16.00	\$ 270.40
0129	Pvmt Mk Painted 4in Line	LF	11,012	\$0.35	\$ 3,854.20				11012	\$0.35	\$ 3,854.20
0130	Pvmt Mk Painted 8in Line	LF	260	\$0.35	\$ 91.00				260	\$0.35	\$ 91.00
0131	Dust Palliative Material	GAL	5,452	\$3.30	\$ 17,991.60				5452	\$3.30	\$ 17,991.60
0132	Force Main - 6" PVC	LF	2,700	\$20.00	\$ 54,000.00				2700	\$20.00	\$ 54,000.00
0133	Force Main - 8" PVC	LF	2,700	\$24.25	\$ 65,475.00				2700	\$24.25	\$ 65,475.00
0134	Sanitary Manhole - Type "E"	EA	2	\$21,368.00	\$ 42,736.00				2	\$21,368.00	\$ 42,736.00
0135	Remove SS Force Main	EA	2	\$1,804.00	\$ 3,608.00				2	\$1,804.00	\$ 3,608.00
0136	Force Main - Connect to Existing	EA	4	\$2,154.00	\$ 8,616.00				4	\$2,154.00	\$ 8,616.00
0137	Plug Valve - 6"	EA	2	\$1,659.00	\$ 3,318.00				2	\$1,659.00	\$ 3,318.00
0138	Plug Valve - 8"	EA	2	\$2,011.00	\$ 4,022.00				2	\$2,011.00	\$ 4,022.00
0139	Sanitary Sewer Force Main Fittings	LBS	326	\$40.00	\$ 13,040.00				326	\$40.00	\$ 13,040.00
0140	15" RCP ST	LF	40	\$121.00	\$ 4,840.00				40	\$121.00	\$ 4,840.00
0141	Gravel - Class 5	CY	25	\$81.25	\$ 2,031.25				25	\$81.25	\$ 2,031.25
0142	4" Insulation	SY	45	\$87.25	\$ 3,926.25				45	\$87.25	\$ 3,926.25
0143	18" Steel Casing Pipe w/ CLSM	LF	460	\$229.50	\$ 105,570.00				460	\$229.50	\$ 105,570.00
0144	Cathodic Protection System	LS	1	\$40,036.00	\$ 40,036.00				1	\$40,036.00	\$ 40,036.00
0145	Topsoil Stripping	SY	19000	\$0.40	\$ 7,600.00				19000	\$0.40	\$ 7,600.00
0146	Topsoil Spread	SY	19000	\$0.95	\$ 18,050.00				19000	\$0.95	\$ 18,050.00
0147	Turf Establishment - Zone 3	AC	3.9	\$1,254.00	\$ 4,890.60				4	\$1,254.00	\$ 4,890.60
0148	Chang Order #1	EA	1.0	\$7,383.47	\$ 7,383.47				1	\$7,383.47	\$ 7,383.47
0149	CO-2: Removing utilities outside of scope	LS	1	\$ 31,932.01	\$ 31,932.01				1	\$31,932.01	\$ 31,932.01
0150	CO-2: Additional borrow pit stripping	LS	1	\$ 38,606.86	\$ 38,606.86				1	\$38,606.86	\$ 38,606.86
0151	CO-2: Subcut in levee footprint	CY	9990	\$ 4.00	\$ 39,960.00				9990	\$4.00	\$ 39,960.00
0152	CO-2: Repair unmarked water pipe	LS	1	\$ 3,534.25	\$ 3,534.25				1	\$3,534.25	\$ 3,534.25
0153	CO-2: Golf course pond dirt	CY	3725	\$ 4.00	\$ 14,900.00				3725	\$4.00	\$ 14,900.00

WP-43CD - Oxbow-Hickson-Bakke Ring Levee-Phases C and D											
ITEM	DESCRIPTION	UNIT	Current Budget			Net Change			New Budget		
			QUANTITY	UNIT PRICE	AMOUNT	QUANTITY	UNIT PRICE	AMOUNT	QUANTITY	UNIT PRICE	AMOUNT
0154	CO-2: Pothole & protect unmarked Oxbow utilities	LS	1	\$ 1,927.60	\$ 1,927.60				1	\$1,927.60	\$ 1,927.60
0155	CO-2: Additional traffic control	LS	1	\$ 3,885.00	\$ 3,885.00				1	\$3,885.00	\$ 3,885.00
0156	CO-2: Adjust STMH-1 to match ex. 18" RCP	LS	1	\$ 4,706.46	\$ 4,706.46				1	\$4,706.46	\$ 4,706.46
0157	CO-2: Oxbow watermain realignment	LS	1	\$ 17,027.45	\$ 17,027.45				1	\$17,027.45	\$ 17,027.45
0158	CO-2: Redirect 3IN WM to 6IN WM	LS	1	\$ 5,644.72	\$ 5,644.72				1	\$5,644.72	\$ 5,644.72
0159	CO-2: Move unsuitable material to golf course	CY	14875	\$ 4.75	\$ 70,656.25				14875	\$4.75	\$ 70,656.25
0160	CO-2: Additional ARVs	LS	1	\$ 7,189.16	\$ 7,189.16				1	\$7,189.16	\$ 7,189.16
0161	CO-2: Temporary access road south of Riverbend Road	LS	1	\$ 37,000.00	\$ 37,000.00				1	\$37,000.00	\$ 37,000.00
0162	CO-2: Cass Rural Water Casing Pipe Install	LS	1	\$ 242,908.80	\$ 242,908.80				1	\$242,908.80	\$ 242,908.80
0163	CO-2: NCN No. 3 Owner testing cost set-off	LS	1	\$ (11,671.00)	\$ (11,671.00)				1	(\$11,671.00)	\$ (11,671.00)
0164	CO-3: Additional cathodic protection	LS				1	\$ 372.09	\$ 372.09	1	\$ 372.09	\$ 372.09
0165	CO-3: Additional aggregate base course	LS				1	\$ 16,143.52	\$ 16,143.52	1	\$ 16,143.52	\$ 16,143.52
0166	CO-3: Temporary sanitary sewer reroute	LS				1	\$ 10,000.00	\$ 10,000.00	1	\$ 10,000.00	\$ 10,000.00
0167	CO-3: Relocate 3-inch CRW water line	LS				1	\$ 5,052.38	\$ 5,052.38	1	\$ 5,052.38	\$ 5,052.38
0168	CO-3: Move topsoil piles for CRW contractor	LS				1	\$ 3,558.72	\$ 3,558.72	1	\$ 3,558.72	\$ 3,558.72
0169	CO-3: Force Main - 6" PVC	LF				1685	\$ 0.29	\$ 488.65	1685	\$ 0.29	\$ 488.65
0170	CO-3: Force Main - 8" PVC	LF				1685	\$ 0.60	\$ 1,011.00	1685	\$ 0.60	\$ 1,011.00
0171	CO-3: Additional grading at Schnell and Oxbow Drive	LS				1	\$ 1,426.48	\$ 1,426.48	1	\$ 1,426.48	\$ 1,426.48
0172	CO-3: Additional sluice gate freight charge	LS				1	\$ 769.65	\$ 769.65	1	\$ 769.65	\$ 769.65
WP-43CD - TOTAL AMOUNT			CURRENT BUDGET		\$ 10,915,067.24	NET CHANGE		\$ 38,822.49	NEW BUDGET		\$ 10,953,889.73

Memorandum

OHB 43CD Change Order No. 3 Recommendation

To: John Glatzmaier, PE; CH2M Project Manager
From: Christopher M. Gross, PE; HMG Project Manager
Date: February 13, 2018
Project: OHB Work Package 43CD

1. Description

OHB Work Package 43CD is the phase of construction on the Oxbow-Hickson-Bakke Ring Levee mitigation project of the overall FM Diversion Project. WP-43CD included 5,550 LF of earthen levee, Pump Station and Gatewell Structure with Outfall, 5,400 LF of Storm Sewer, 2,300 LF of Gravity Sanitary Sewer, 5,400 LF of Sanitary Forcemain, 3,475 LF of City Street, 3,165 LF of Cass County Highway 81 Road Raise, and other components in Cass County, North Dakota. A construction contract in the amount of \$10,399,476.21 was awarded to Meyer Contracting, Inc. on July 14, 2017. Construction on WP-43CD began on August 9, 2017 and will continue until the summer of 2018 pending the lifting of the Preliminary Injunction. To date, approximately 80% of the overall project is completed.

2. Change Order Requests from Meyer Contracting

Meyer COR Code	Description	Qty	Unit	Unit Price	Total
8000004	Additional cathodic protection	1	LS	\$372.09	\$372.09
9000002	Unable to use Oxbow Drive reclaimed material	1	LS	\$16,143.52	\$16,143.52
9000017	Temporary sanitary reroute	1	LS	\$10,000.00	\$10,000.00
9000024	Relocate CRW line for 54" RCP	1	LS	\$5,052.38	\$5,052.38
9000028	Move topsoil piles for CRW contractor	1	LS	\$3,558.72	\$3,558.72
9000030	Additional material cost for sanitary forcemain	1	LS	\$1,499.65	\$1,499.65
9000033	Additional grading at Schnell and Oxbow Drive	1	LS	\$1,426.48	\$1,426.48
9000040	Wanzek freight charges	1	LS	\$769.65	\$769.65
				TOTAL	\$ 38,822.49

The change order requests listed above have been reviewed by the HMG design team and are being recommended for approval. The work items have not been authorized by prior contract documents but were completed by Meyer and are being requested for Owner approval. A short summary of each item is below. The complete supporting documentation provided by Meyer Contracting is also attached to this Memo.

COR 8000004 – Additional cathodic protection – this work included adding an additional test station to the 16” steel casing pipe’s cathodic protection. This work was necessary to not require the header wires connecting the anodes to perforate the levee. This work was done on a T & M basis with HMG concurring with the T & M submitted by Meyer Contracting.

COR 9000002 – Unable to use Oxbow Drive reclaimed material – this work included the importing of additional aggregate base course for the construction of Oxbow Drive. Meyer Contracting originally intended to use Oxbow Drive reclaimed asphalt and aggregate for the base course but due to the non-existence of adequate existing aggregate, this method could not be used. Reclaimed material from other project work features was then used as the aggregate base course. The additional cost was calculated by Meyer Contracting by comparing as-bid costs to as-constructed costs. The additional cost requested equates to \$3.25/SY more than the unit price bid. With the increase, the total unit price of aggregate base course is \$6.25/SY. This price is in-line with other contractor bids in the region and HMG concurs with the cost increase submitted by Meyer Contracting.

COR 9000017 – Temporary sanitary reroute – this work included installing two temporary sanitary sewer lines. Due to a delay in the delivery of the casing pipe caused by Hurricane Harvey, temporary pipe and air relief valves were installed until the casing pipe and carrier pipe could be delivered, installed, and tested. This work was done on a T & M basis and Meyer originally submitted a cost of \$32,062.65. HMG had several meetings with Meyer Contracting to discuss a further breakdown of these costs. As stated above, one of the main reasons for this COR is the Act of God event of Hurricane Harvey. Meyer provided documentation indicating that delay did in fact occur due to the hurricane that in effect, was a partial contributor to the temporary sanitary reroute to be installed. After further discussion and negotiation, Meyer Contracting offered to reduce the cost request to \$10,000.00 to cover a majority of its material cost. No labor costs are included in the \$10,000.00 cost. HMG concurs with the cost increase submitted by Meyer Contracting.

COR 9000024 – Relocate CRW line for 54” RCP – this work included relocating a Cass Rural Water line along the 54” RCP alignment between Oxbow Drive and Main Avenue (CR 25). Work included installing pipe reducers, elbows, and additional pipe to accommodate the newly installed 54” RCP trunk sewer from the new Oxbow development area. HMG discussed several options with CRW to determine the best course of correction. It was determined that relocating the 3” line above the 54” RCP would be the best option. Insulation would be installed above and below the new 3” line for frost protection since the depth of cover would now be approximately 2 feet less. HMG then directed the Contractor to proceed with the CRW agreed upon plan. This work was done on a T & M basis with HMG concurring with the T & M submitted by Meyer Contracting.

COR 9000028 – Move topsoil piles for CRW contractor – this work included relocating topsoil stockpiles to accommodate the installation of the new Cass Rural Water line. In order to abandon and remove the active rural water lines under the 43C levee, a new pipe was installed by CRW from the levee to the south. Due to scheduling conflicts and in order to keep the construction moving forward, the topsoil piles needed to be moved. This work was done on a T & M basis with HMG concurring with the T & M submitted by Meyer Contracting.

COR 9000030 – Additional material cost for sanitary forcemain – this item is for compensation on the additional forcemain pipe that was installed on the project. Again, due to Hurricane Harvey, pipe prices increased after the storm. As shown in the supporting documentation, pricing for 6” and 8” forcemain pipe increased \$0.27/LF and \$0.56/LF, respectively. This cost increase is reasonable and HMG concurs with the cost increase submitted by Meyer Contracting, however, HMG recommends only allowing payment on the additional 1,685 LF ordered and installed.

COR 9000033 – Additional grading at Schnell and Oxbow Drive – this work included cutting and shaping a swale to the Red River at the intersection of Oxbow and Schnell Drive to accommodate future drainage on the back (wet) side of the levee. This work was done on a T & M basis with HMG concurring with the T & M submitted by Meyer Contracting.

COR 9000040 - Wanzek freight charges – this item is for compensation on the expedited freight charges that were incurred to ship sluice gates to the project site prior to the anticipated court ordered shut down on January 1, 2018. Once it was determined that it was no longer advantageous to only install one gate, Meyer attempted to cancel the expedited nature of the gate delivery; however, the delivery was already scheduled and the cost had been incurred. This cost increase is reasonable and HMG concurs with the cost increase submitted by Meyer Contracting.

The total change order amount being requested is \$38,808.80. This amounts to 0.37% of the original contract amount. To date, all change orders on the project amount to 5.33% of the original contract amount.

The updated completion dates of the affected Milestones are as follows:

Milestone 8 – add 6.5 days - increased to January 8, 2018



January 19, 2018

Christopher M Gross, PE, CFM
Moore Engineering, Inc.
925 10th Avenue East
West Fargo, ND 58078

Subject: Oxbow – Hickson – Bakke Ring Levee – Phases C and D; Work Package 43CD
Change Order Request – Additional Cathodic Protection

Dear Mr. Gross,

On plan page C201, provided in Work Change Directive 1, one test station is called out on the south end of the 16” steel casing pipe. Per RFI-058 response, direction was given to add an additional test station based on a revised wiring method.

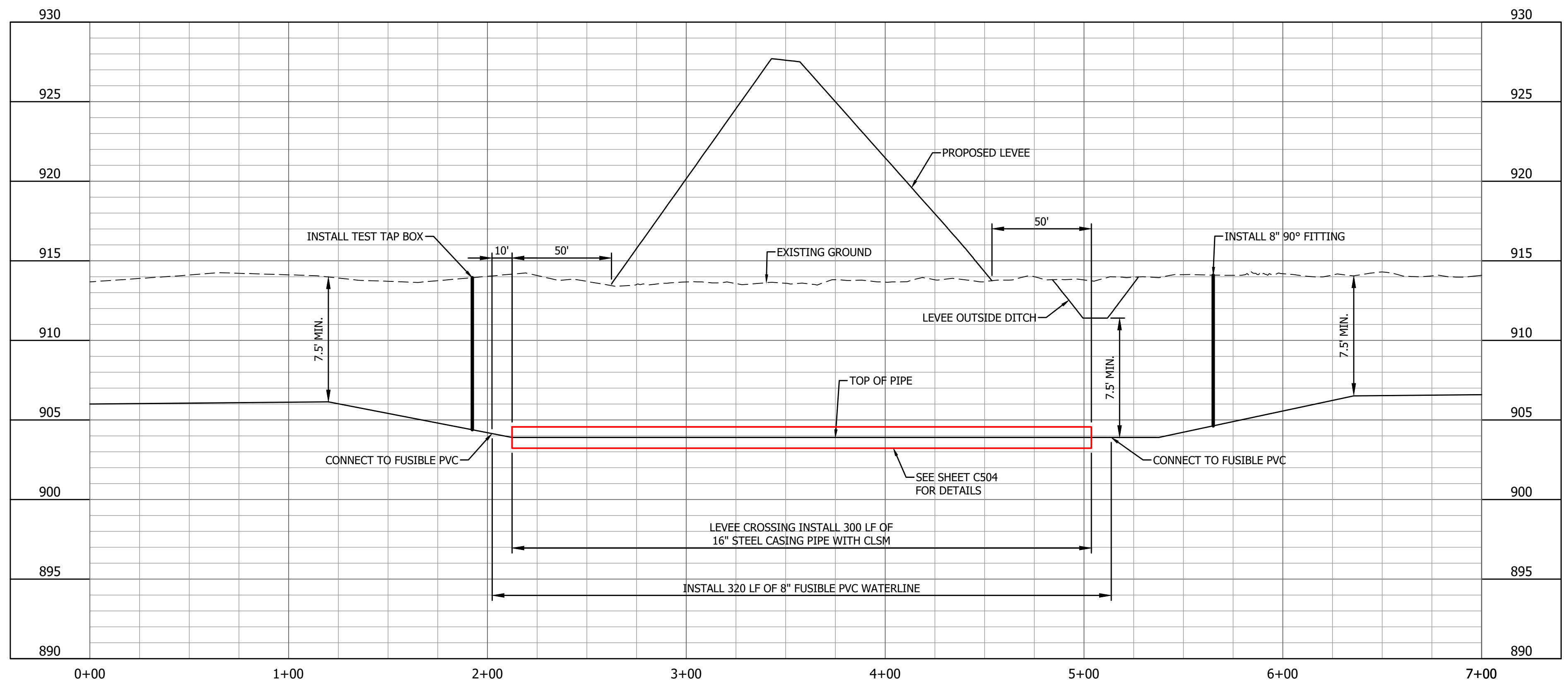
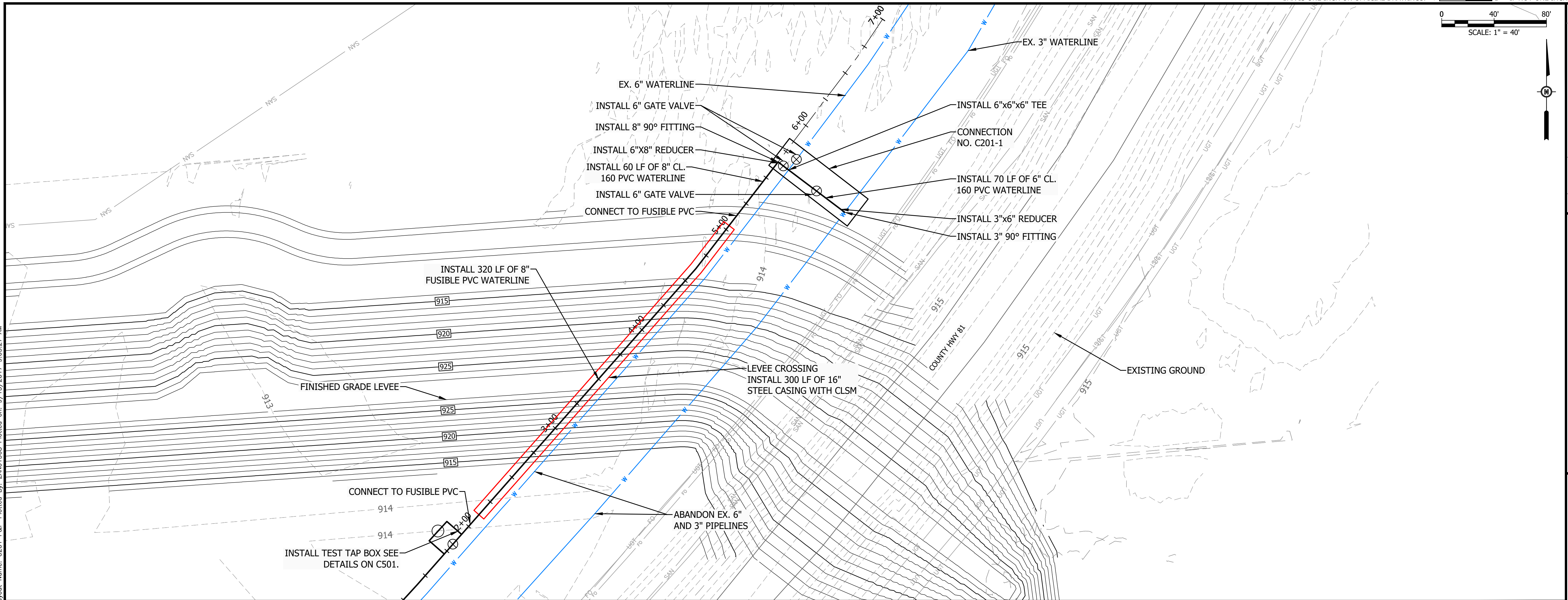
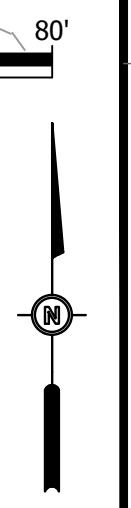
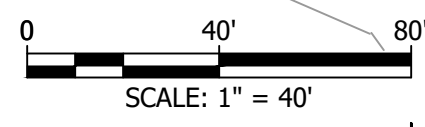
Based on the aforementioned information and calculation of cost impact we hereby request additional compensation in the amount of \$372.09.

Thank you.

Respectfully,

A handwritten signature in blue ink, appearing to read 'Jeremy Gibbs', is written over a light blue horizontal line.

Jeremy Gibbs
Meyer Contracting, Inc.



BY	DATE	DESCRIPTION

Bartlett & West
www.bartwest.com

**NORTH CONNECTION
PLAN AND PROFILE**
CASS RURAL WATER DISTRICT
PIPELINE RELOCATION FOR OHB RING LEVEE PROJECT
OXBOW, NORTH DAKOTA

REVIEW SET

DESIGNED BY:	BJZ
DRAWN BY:	ZAN
APPROVED BY:	BJZ
DESIGN PROJ:	3057_064
CONST PROJ:	3057_064
SCALE:	AS NOTED
DATE:	09/2017
DRAWING NO:	C201
SHEET NO:	6 of 10

Drawing Name: F:\Proj\3000\3057_064\AutoCad\Plan Set\OHB Pipeline Replacement\3057_064C_Layout.dwg
 Layout Name: C201 P&P Plotted By: ZAN01368 Plotted on: 9/13/2017 9:05:27 AM
 Last edit on: 09/09/00

ALL RIGHTS RESERVED. ALL BARTLETT & WEST PLANS, SPECIFICATIONS AND DRAWINGS ARE PROTECTED UNDER COPYRIGHT LAW, AND NO PART MAY BE COPIED, REPRODUCED, DISPLAYED, PUBLICLY USED TO CREATE DERIVATIVES, DISTRIBUTED, STORED IN A RETRIEVAL SYSTEM OR TRANSMITTED IN ANY FORM BY ANY MEANS WITHOUT PRIOR WRITTEN PERMISSION OF BARTLETT & WEST.



MAIL TYPE
Response to RFI

MAIL NUMBER
FMDA-RSR-000474

REFERENCE NUMBER
Meyer CI-RFI-000058

Re: Cathodic Protection Wiring on 16" Steel Casing for Watermain Response

From CH2M Submittal Coordinator - Diversion Authority

To Mr Kevin Douglas - Meyer Contracting, Inc.

Cc (9) Nathan Boerboom - Diversion Authority
Mr Robert Cowen - Diversion Authority
Mitchell Haskins - Diversion Authority
Paul Barthel - Diversion Authority
Chris Gross - HMG
MistyLee Quast - Meyer Contracting, Inc.
Verlyn Schoep - Meyer Contracting, Inc.
Patrick Baldy - Meyer Contracting, Inc.
Brenden Davis - Meyer Contracting, Inc.

Sent Friday, November 17, 2017

DETAILS

Sub-Program	Diversion Channel and Associated Infrastructure
Project Name	WP43CD - OHB Ring Levee Phases C and D
Functional Area/Discipline	Civil
Reference No	
Reference Documents	Yes
Attached	
Cost Impact	No
Schedule Impact	Yes
Work Impact	Impeded
Description/Information Requested	Plan set calls for six anode heads to be spliced into one header wire which is run underneath the levee into one test station. Are we to bury the cathodic protection header wire underneath the levee?
Proposed Solution	As with the 18" casing, allow us to splice 3 anodes to one header wire for two separate test stations, one on the north side of the casing, the other on the south side of the casing.
Response	Please install similar to the 18" casing and splice 3 anodes to one header wire for two separate test stations

with one on the north side of the casing and the other on the south side of the casing.

MESSAGE

Please see the RFI response for your use and please 'Close Out' this mail item on your side.
Thank you,

Amanda Franklin
Document Controls Professional 4
D 1 720 286 1478
F 1 720 286 8136

CH2M/Teleworker-COS
amanda.franklin@ch2m.com

From: M Haskins
Sent: 11/17/17 6:42:46 AM MST (GMT -07:00)
To: CH2M Submittal Coordinator
Mail Number: FMDA-RSR-000473
Subject: Re: For Approval Fwd: Cathodic Protection Wiring on 16" Steel Casing for Watermain Response

Sub-Program:	Diversion Channel and Associated Infrastructure
Project Name:	WP43CD - OHB Ring Levee Phases C and D
Functional Area/Discipline:	Civil
Reference No:	
Reference Documents Attached:	Yes
Cost Impact:	No
Schedule Impact:	Yes
Work Impact:	Impeded
Description/Information Requested:	Plan set calls for six anode heads to be spliced into one header wire which is run underneath the levee into one test station. Are we to bury the cathodic protection header wire underneath the levee?
Proposed Solution:	As with the 18" casing, allow us to splice 3 anodes to one header wire for two separate test stations, one on the north side of the casing, the other on the south side of the casing.
Response:	Please install similar to the 18" casing and splice 3 anodes to one header wire for two separate test stations with one on the north side of the casing and the other on the south side of the casing.

Amanda,

Please use the engineers comments and close out.

Mitchell

From: C Submittal Coordinator
Sent: 11/16/17 2:06:34 PM CST (GMT -06:00)
To: Mitchell Haskins
Cc: Paul Barthel, Robert Cowen
Mail Number: FMDA-RSR-000472
Subject: For Approval Fwd: Cathodic Protection Wiring on 16" Steel Casing for Watermain Response

Sub-Program:	Diversion Channel and Associated Infrastructure
Project Name:	WP43CD - OHB Ring Levee Phases C and D
Functional Area/Discipline:	Civil
Reference No:	
Reference Documents Attached:	Yes
Cost Impact:	No
Schedule Impact:	Yes
Work Impact:	Impeded
Description/Information Requested:	Plan set calls for six anode heads to be spliced into one header wire which is run underneath the levee into one test station. Are we to bury the cathodic protection header wire underneath the levee?
Proposed Solution:	As with the 18" casing, allow us to splice 3 anodes to one header wire for two separate test stations, one on the north side of the casing, the other on the south side of the casing.
Response:	Please install similar to the 18" casing and splice 3 anodes to one header wire for two separate test stations with one on the north side of the casing and the other on the south side of the casing.

Mitchell, please see Chris' response and advise if this is ready for us to return to the Contractor and close out.

Thank you,

Amanda Franklin
 Document Controls Professional 4
 D 1 720 286 1478
 F 1 720 286 8136

CH2M/Teleworker-COS
 amanda.franklin@ch2m.com

From: C Gross
Sent: 11/16/17 12:58:40 PM MST (GMT -07:00)
To: CH2M Submittal Coordinator
Cc: Paul Barthel, Nathan Boerboom, Robert Cowen, Mitchell Haskins
Mail Number: HMG-RSR-000197
Subject: Re: Cathodic Protection Wiring on 16" Steel Casing for Watermain For Response

Sub-Program:	Diversion Channel and Associated Infrastructure
Project Name:	WP43CD - OHB Ring Levee Phases C and D
Functional Area/Discipline:	Civil
Reference No:	
Reference Documents	Yes

Attached:	
Cost Impact:	No
Schedule Impact:	Yes
Work Impact:	Impeded
Description/Information Requested:	Plan set calls for six anode heads to be spliced into one header wire which is run underneath the levee into one test station. Are we to bury the cathodic protection header wire underneath the levee?
Proposed Solution:	As with the 18" casing, allow us to splice 3 anodes to one header wire for two separate test stations, one on the north side of the casing, the other on the south side of the casing.
Response:	Please install similar to the 18" casing and splice 3 anodes to one header wire for two separate test stations with one on the north side of the casing and the other on the south side of the casing.

From: C Submittal Coordinator
Sent: 11/13/17 8:56:48 AM CST (GMT -06:00)
To: Chris Gross
Cc: Paul Barthel, Nathan Boerboom, Robert Cowen, Mitchell Haskins
Mail Number: FMDA-RSR-000469
Subject: Fwd: Cathodic Protection Wiring on 16" Steel Casing for Watermain For Response

Sub-Program:	Diversion Channel and Associated Infrastructure
Project Name:	WP43CD - OHB Ring Levee Phases C and D
Functional Area/Discipline:	Civil
Reference No:	
Reference Documents Attached:	Yes
Cost Impact:	No
Schedule Impact:	Yes
Work Impact:	Impeded
Description/Information Requested:	Plan set calls for six anode heads to be spliced into one header wire which is run underneath the levee into one test station. Are we to bury the cathodic protection header wire underneath the levee?
Proposed Solution:	As with the 18" casing, allow us to splice 3 anodes to one header wire for two separate test stations, one on the north side of the casing, the other on the south side of the casing.
Response:	Chris, please see the attached RFI for your response. Thank you, Amanda

Amanda Franklin
 Document Controls Professional 4
 D 1 720 286 1478
 F 1 720 286 8136

CH2M/Teleworker-COS
 amanda.franklin@ch2m.com

From: K Douglas

Sent: 11/13/17 7:31:12 AM MST (GMT -07:00)

To: CH2M Submittal Coordinator

Cc: Patrick Baldy, Brenden Davis, Todd Frerk, MistyLee Quast

Mail Number: Meyer CI-RFI-000058

Subject: Cathodic Protection Wiring on 16" Steel Casing for Watermain

Sub-Program:	Diversion Channel and Associated Infrastructure
Project Name:	WP43CD - OHB Ring Levee Phases C and D
Functional Area/Discipline:	Civil
Reference No:	
Specification Ref:	
Plan Ref:	
Reference Documents Attached:	Yes
Cost Impact:	No
Schedule Impact:	Yes
Work Impact:	Impeded
Description/Information Requested:	Plan set calls for six anode heads to be spliced into one header wire which is run underneath the levee into one test station. Are we to bury the cathodic protection header wire underneath the levee?
Proposed Solution:	As with the 18" casing, allow us to splice 3 anodes to one header wire for two separate test stations, one on the north side of the casing, the other on the south side of the casing.

Work Change Directive Summary of Costs

Meyer Project Number: 171297
Owner Contract Number: WP-43CD
Owner Contract Name: Oxbow-Hickson-Bakke Ring Levee - Phases C & D
Change Order Request Number: 8000004
Change Order Request Name/Desc.: ADDITIONAL CATHODIC PROTECTION

LABOR ONLY

TOTAL: \$175.31

SUBSTANCE

	Unit	Quantity	Unit Cost		TOTAL:	\$38.78
(Use \$75 for MN & \$120 for ND)	10.83-HR Day/Person	0.32	\$120.00			

EQUIPMENT w/OPERATOR

TOTAL: \$158.00

MATERIALS & RENTAL EQUIPMENT

Description	Unit	Quantity	Unit Cost	Tax (%)	Total Cost
					\$0.00
					\$0.00
					\$0.00
					\$0.00
					\$0.00
Management & Overhead (10%)					\$0.00
TOTAL:					\$0.00

SUBCONTRACTORS

Description	Unit	Quantity	Unit Cost	Total Cost
				\$0.00
				\$0.00
				\$0.00
				\$0.00
				\$0.00
Management & Overhead (10%)				\$0.00
TOTAL:				\$0.00

MOBILIZATION

Description	Unit	Quantity	Unit Cost	Total Cost
				\$0.00
Management & Overhead (10%)				\$0.00
TOTAL:				\$0.00

TOTAL: \$372.09

ADDITIONAL CATHODIC PROTECTION		Date		Date		Date		Date		Date		Date		Date		Date	
		12/11/2017		12/19/2017													
Pc360Lc-10 Komatsu Excavator W/Ripper Tooth	\$247.00		\$0.00		\$0.00		\$0.00		\$0.00		\$0.00		\$0.00		\$0.00		\$0.00
Ec460Cl Or Ec480Cl Volvo Excavator	\$266.00	0.50	\$133.00		\$0.00		\$0.00		\$0.00		\$0.00		\$0.00		\$0.00		\$0.00
Ec460Cl Or Ec480Cl Volvo Excavator W/Compaction Wheel	\$277.00		\$0.00		\$0.00		\$0.00		\$0.00		\$0.00		\$0.00		\$0.00		\$0.00
Pc400 Komatsu Excavator	\$266.00		\$0.00		\$0.00		\$0.00		\$0.00		\$0.00		\$0.00		\$0.00		\$0.00
Pc400 Komatsu Excavator W/Concrete Pulverizer	\$303.00		\$0.00		\$0.00		\$0.00		\$0.00		\$0.00		\$0.00		\$0.00		\$0.00
Pc400 Komatsu Excavator W/Ripper Tooth	\$277.00		\$0.00		\$0.00		\$0.00		\$0.00		\$0.00		\$0.00		\$0.00		\$0.00
Pc400 Komatsu Excavator W/Compaction Wheel	\$277.00		\$0.00		\$0.00		\$0.00		\$0.00		\$0.00		\$0.00		\$0.00		\$0.00
349El Caterpillar Excavator - Variable Gauge	\$276.00		\$0.00		\$0.00		\$0.00		\$0.00		\$0.00		\$0.00		\$0.00		\$0.00
Pc800Lc-8 Komatsu Excavator	\$401.00		\$0.00		\$0.00		\$0.00		\$0.00		\$0.00		\$0.00		\$0.00		\$0.00
Dozers																	
D5Klgp Caterpillar Dozer	\$170.00		\$0.00		\$0.00		\$0.00		\$0.00		\$0.00		\$0.00		\$0.00		\$0.00
D5Klgp Caterpillar Dozer W/Gps System	\$188.00		\$0.00		\$0.00		\$0.00		\$0.00		\$0.00		\$0.00		\$0.00		\$0.00
700Jlgp John Deere Dozer	\$170.00		\$0.00		\$0.00		\$0.00		\$0.00		\$0.00		\$0.00		\$0.00		\$0.00
700Jlgp John Deere Dozer W/Gps System	\$188.00		\$0.00		\$0.00		\$0.00		\$0.00		\$0.00		\$0.00		\$0.00		\$0.00
D51 Komatsu Dozer	\$170.00		\$0.00		\$0.00		\$0.00		\$0.00		\$0.00		\$0.00		\$0.00		\$0.00
D51 Komatsu Dozer W/Gps System	\$188.00		\$0.00		\$0.00		\$0.00		\$0.00		\$0.00		\$0.00		\$0.00		\$0.00
850K John Deere Dozer	\$170.00		\$0.00		\$0.00		\$0.00		\$0.00		\$0.00		\$0.00		\$0.00		\$0.00
850C John Deere Dozer	\$195.00		\$0.00		\$0.00		\$0.00		\$0.00		\$0.00		\$0.00		\$0.00		\$0.00
D61Px Komatsu Dozer	\$190.00		\$0.00		\$0.00		\$0.00		\$0.00		\$0.00		\$0.00		\$0.00		\$0.00
D65 Komatsu Dozer	\$195.00		\$0.00		\$0.00		\$0.00		\$0.00		\$0.00		\$0.00		\$0.00		\$0.00
D65 Komatsu Dozer W/Gps System	\$213.00		\$0.00		\$0.00		\$0.00		\$0.00		\$0.00		\$0.00		\$0.00		\$0.00
D6Tlxw Or D6Tlgp Caterpillar Dozer	\$195.00		\$0.00		\$0.00		\$0.00		\$0.00		\$0.00		\$0.00		\$0.00		\$0.00
D6Tlxw Or D6Tlgp Caterpillar Dozer W/Gps System	\$213.00		\$0.00		\$0.00		\$0.00		\$0.00		\$0.00		\$0.00		\$0.00		\$0.00
D6Nlgp Caterpillar Dozer	\$190.00		\$0.00		\$0.00		\$0.00		\$0.00		\$0.00		\$0.00		\$0.00		\$0.00
D6Nlgp Caterpillar Dozer W/Gps System	\$208.00		\$0.00		\$0.00		\$0.00		\$0.00		\$0.00		\$0.00		\$0.00		\$0.00
Loaders																	
L70F Volvo Wheel Loader	\$162.00		\$0.00		\$0.00		\$0.00		\$0.00		\$0.00		\$0.00		\$0.00		\$0.00
950G, H Or K Caterpillar Wheel Loader	\$181.00		\$0.00		\$0.00		\$0.00		\$0.00		\$0.00		\$0.00		\$0.00		\$0.00
L120E Volvo Wheel Loader	\$181.00		\$0.00		\$0.00		\$0.00		\$0.00		\$0.00		\$0.00		\$0.00		\$0.00
L110E Or F Volvo Wheel Loader	\$181.00		\$0.00		\$0.00		\$0.00		\$0.00		\$0.00		\$0.00		\$0.00		\$0.00
953C Caterpillar Track Loader	\$167.00		\$0.00		\$0.00		\$0.00		\$0.00		\$0.00		\$0.00		\$0.00		\$0.00
Scrapers																	
621B Caterpillar Scraper	\$213.00		\$0.00		\$0.00		\$0.00		\$0.00		\$0.00		\$0.00		\$0.00		\$0.00
621B Caterpillar Scraper W/Gps	\$231.00		\$0.00		\$0.00		\$0.00		\$0.00		\$0.00		\$0.00		\$0.00		\$0.00
627M Caterpillar Scraper (Rental)	\$386.00		\$0.00		\$0.00		\$0.00		\$0.00		\$0.00		\$0.00		\$0.00		\$0.00
Motor Graders																	
140H, 143H Or 140M Caterpillar Motor Grader	\$182.00		\$0.00		\$0.00		\$0.00		\$0.00		\$0.00		\$0.00		\$0.00		\$0.00
140H, 143H Or 140M Caterpillar Motor Grader W/Gps	\$200.00		\$0.00		\$0.00		\$0.00		\$0.00		\$0.00		\$0.00		\$0.00		\$0.00
Compactors																	
54" Smooth Drum Or Sheepsfoot Compactor	\$142.00		\$0.00		\$0.00		\$0.00		\$0.00		\$0.00		\$0.00		\$0.00		\$0.00
66" Smooth Drum Or Sheepsfoot Compactor	\$145.00		\$0.00		\$0.00		\$0.00		\$0.00		\$0.00		\$0.00		\$0.00		\$0.00
84" Smooth Drum Or Sheepsfoot Compactor	\$160.00		\$0.00		\$0.00		\$0.00		\$0.00		\$0.00		\$0.00		\$0.00		\$0.00
Rt-820 Wacker Vibratory Walk Behind Compactor	\$36.00		\$0.00		\$0.00		\$0.00		\$0.00		\$0.00		\$0.00		\$0.00		\$0.00
Wacker Plate Compactor	\$17.00		\$0.00		\$0.00		\$0.00		\$0.00		\$0.00		\$0.00		\$0.00		\$0.00
Offroad Trucks																	
A30 Volvo Articulated Truck	\$226.00		\$0.00		\$0.00		\$0.00		\$0.00		\$0.00		\$0.00		\$0.00		\$0.00
Hm400 Komatsu Articulated Truck	\$252.00		\$0.00		\$0.00		\$0.00		\$0.00		\$0.00		\$0.00		\$0.00		\$0.00
A40F Volvo Articulated Truck	\$252.00		\$0.00		\$0.00		\$0.00		\$0.00		\$0.00		\$0.00		\$0.00		\$0.00
A30 Volvo Articulated Water Tanker Truck	\$225.00		\$0.00		\$0.00		\$0.00		\$0.00		\$0.00		\$0.00		\$0.00		\$0.00
Pumps																	
8" Mwi Dewatering Pump	\$45.00		\$0.00		\$0.00		\$0.00		\$0.00		\$0.00		\$0.00		\$0.00		\$0.00
4" Hydra-Tech Hydraulic Pump	\$45.00		\$0.00		\$0.00		\$0.00		\$0.00		\$0.00		\$0.00		\$0.00		\$0.00
Farm Equipment																	

Cost Code Review

Cost Code: 8000004 ADDITIONAL CATHODIC PROTE LS

Code	Description	Class	Reg. Hours	OT Hours	Other Hours
Date: 12/11/2017 Foreman: 935 Shift: 1					
Time Card:					
Production Quantities: 0.000					
935	Brian Schmit	GSUP	0.50	0.00	0.00
EX10016	EC460CL excavator		0.50	0.00	0.00
01277	Kyle Opsahl	MNLC6	0.50	0.00	0.00
01259	Jason Charette	MNLC1	0.50	0.00	0.00
Labor Totals:				Hours -	1.5
Equip Totals:				Hours -	0.5

Date: 12/19/2017 Foreman: 01389 Shift: 1					
Time Card:					
Production Quantities: 0.000					
01389	Kevin Douglas	NU	1.00	0.00	0.00
TK22050	2012 Ford pickup truck		1.00	0.00	0.00
Labor Totals:				Hours -	1.0
Equip Totals:				Hours -	1.0

Cost Code Notes:
 Slot: 1
 Company Note: wired additional test station
 Indexes:
 Inspector Note:

Cost Code Review

Cost Code: 8000004

ADDITIONAL CATHODIC PROTE

LS

Code	Description	Class	Reg. Hours	OT Hours	Other Hours
------	-------------	-------	------------	----------	-------------

NOTE:

Filters in effect:

All Foremen.

Cost Code = 8000004.

Dates >= 07/19/2017 and Dates <= 01/16/2018.



January 19, 2018

Christopher M Gross, PE, CFM
Moore Engineering, Inc.
925 10th Avenue East
West Fargo, ND 58078

Subject: Oxbow-Hickson-Bakke Ring Levee-Phases C and D; Work Package 43CD
Change Order Request – Oxbow Drive Reclaimed Material

Dear Mr. Gross,

Upon reclaiming the Oxbow Drive existing pavement we discovered that there was not any aggregate material underlying the existing asphalt pavement as indicated on Plan Sheet CD301. As a result of this changed construction condition, we were unable to reclaim the material as planned to produce aggregate base. Since we were unable to use this material as aggregate base, all we could do with the material was use a portion of it to build the temporary access road along Oxbow Drive.

As a result of this changed construction condition, we will now be required to import an approximated additional 1,810.35 tons of imported aggregate base to the project. Plan sheet CD301 shows eight inches of existing aggregate material underlying approximately 7.63 inches of asphalt. When we reclaimed the pavement, it was discovered that the pavement was placed over clay. Since the underlying material was clay the asphalt reclaiming machine was not able to recycle the pavement into a usable base material.

Attached is a computation of the additional costs anticipated to be incurred as a result of not being able to salvage the pavement and base as planned. Based on the aforementioned information and the attached calculation of cost impact we hereby request additional compensation in the amount of \$16,143.52. This amount has been reevaluated and revised from the previously requested amount of \$57,902.04.

We believe this request is fair and equitable and best represents the actual costs incurred due to the changed construction conditions.

Thank you.

Respectfully,



A handwritten signature in blue ink, appearing to read 'Jeremy Gibbs', is positioned below the logo.

Jeremy Gibbs
Meyer Contracting, Inc.

01/19/2018
171297EXTRA1
*** Jeremy Gibbs

17:13
EXTRA 1 - OXBOW DRIVE RECLAIMED MATL.

BID TOTALS

<u>Biditem</u>	<u>Description</u>	<u>Status - Rnd</u>	<u>Quantity</u>	<u>Units</u>	<u>Unit Price</u>	<u>Bid Total</u>
10	AS BID COSTS	C	1.000	LS	-24,374.77	-24,374.77
20	AS CONSTRUCTED COSTS	C	1.000	LS	40,518.29	40,518.29
Bid Total =====>						\$16,143.52

Direct Cost Report

Activity Resource	Description	Pcs	Quantity Unit	Unit Cost	Labor	Perm Material	Constr Matl/Exp	Equipment Ownership	Equipment Operation	Sub-Contract	Total
-------------------	-------------	-----	---------------	-----------	-------	---------------	-----------------	---------------------	---------------------	--------------	-------

BID ITEM = 10

Description = AS BID COSTS Unit = LS Takeoff Quan: 1.000 Engr Quan: 1.000

100000 REMOVE BITUMINOUS PAVEMENT Quan: -483.00 TN Hrs/Shft: 12.00 Cal: 72 WC: NONE

7" , FIGURED 25% BEING CHUNKED OUT

Code	Description	Pcs	Quantity Unit	Unit Cost	Prod	UH	Lab Pcs	Cal	WC	Eqp Pcs	Sub-Contract	Total
<u>ED340P</u>	460 Volvo Pave Rem.		-4.83 CH		100.0000			3.50		2.50		
5TD	TRUCKING (DEMO)	1.00	-483.00 TN	1.570				-759				-759
8B336	336F Cat excavator	1.00	-4.83 HR	79.000					-204	-180		-383
8L950	950M Cat wheel loader	1.00	-4.83 HR	57.000					-169	-108		-276
8USAW	Walk-behind concrete s	0.50	-2.42 HR	13.000					-14	-20		-32
L	Laborer - Common	0.50	-2.42 MH	31.000			-159					-159
LG	Laborer - GC	1.00	-4.83 MH	31.000			-316					-316
OB	Operator - Backhoe	1.00	-4.83 MH	36.390			-362					-362
OLC	Operator - Loader	1.00	-4.83 MH	34.840			-350					-350
\$-2,629.00	0.0350		-16.9100	[]			-1,183	-759	-385	-306		-2,630
	1,200.0000 Un/Shift		28.5630 Unit/MH				2.45	1.57	0.79	0.63		5.44

100001 RECLAIM/STOCKPILE AGGREGATE Quan: -2,011.50 TN Hrs/Shft: 12.00 Cal: 72 WC: NONE

FIGURED 75% BEING RECLAIMED AND SALVAGED FOR RE-USE, 7" ASPHALT AND 3" AGGREGATE, REDUCE COMMON EXCAVATION EXCESS BY 300.00 CYEV FOR SALVAGED AGGREGATE

Code	Description	Pcs	Quantity Unit	Unit Cost	Prod	UH	Lab Pcs	Cal	WC	Eqp Pcs	Sub-Contract	Total
<u>EF140M</u>	140 MG-Roadway Finish		-10.05 CH		200.0000			5.00		4.00		
4REC/M	MILLING/GRINDING SU	1.00	-3,600.00 SY	1.003							-3,614	-3,614
5TO	TRUCKING (ONSITE)	1.00	-2,011.50 TN	1.120				-2,254				-2,254
8B336	336F Cat excavator	1.00	-10.06 HR	79.000					-424	-373		-796
8D6N	D6NLGP Cat dozer	1.00	-10.06 HR	74.000					-428	-319		-745
8G140	140M Cat motor grader	1.00	-10.06 HR	66.000					-401	-265		-665
8L950	950M Cat wheel loader	1.00	-10.06 HR	57.000					-351	-224		-574
LG	Laborer - GC	1.00	-10.06 MH	31.000			-656					-656
OB	Operator - Backhoe	1.00	-10.06 MH	36.390			-752					-752
OD	Operator - Dozer	1.00	-10.06 MH	36.390			-752					-752
OG	Operator - Blade	1.00	-10.06 MH	36.390			-752					-752
OLC	Operator - Loader	1.00	-10.06 MH	34.840			-729					-729
\$-12,279.09	0.0250		-50.3000	[]			-3,638	-2,254	-1,601	-1,178	-3,614	-12,280
	2,401.7910 Un/Shift		39.9901 Unit/MH				1.81	1.12	0.80	0.59	1.80	6.10

200000 F & I RECLAIMED AGGREGATE BASE - ROADWAY Quan: -1,810.35 TN Hrs/Shft: 12.00 Cal: 72 WC: NONE

FROM RECLAIMED STOCKILE, 2011.5 TN STOCKPILED LESS 10% FOR STOCKPILE LOSS = 1810.35 TN AVAILABLE, 201.15 TN (107.28 CYEV) ADDED TO COMMON

Direct Cost Report

Activity Resource	Description	Pcs	Quantity Unit	Unit Cost	Labor	Perm Material	Constr Matl/Exp	Equipment Ownership	Equipment Operation	Sub-Contract	Total
BID ITEM = 10											
Description = AS BID COSTS			Unit =	LS	Takeoff Quan:	1.000	Engr Quan:	1.000			
EXCAVATION EXCESS FOR RECLAIMED WASTE											
<u>EP140M</u>	140 MG & D6T- Agg Place.		-7.24 CH	Prod: 250.0000 UH	Lab Pcs: -974	5.50	Eqp Pcs: 4.50				
2AGBCL5T	CL V BASE@106.5%	0.05	-90.52 TN	10.097							-974
5TO	TRUCKING (ONSITE)	1.00	-1,810.35 TN	1.120			-2,029				-2,029
8C84	84" smooth drum compac	1.00	-7.24 HR	49.000				-215	-142		-356
8D6T	D6TXW Cat dozer	0.50	-3.62 HR	83.000				-177	-125		-301
8G140	140M Cat motor grader	1.00	-7.24 HR	66.000				-289	-191		-479
8L950	950M Cat wheel loader	1.00	-7.24 HR	57.000				-253	-162		-414
8TWAT	Water truck	1.00	-7.24 HR	53.000				-224	-162		-385
LG	Laborer - GC	1.00	-7.24 MH	31.000	-473						-473
OD	Operator - Dozer	0.50	-3.62 MH	36.390	-271						-271
OG	Operator - Blade	1.00	-7.24 MH	36.390	-542						-542
OLC	Operator - Loader	1.00	-7.24 MH	34.840	-525						-525
OR	Operator - Compactor	1.00	-7.24 MH	30.290	-475						-475
TD	Truck Driver - Heavy High	1.00	-7.24 MH	31.000	-483						-483
\$-7,692.18	0.0219		-39.8200	[]	-2,763	-974	-2,029	-1,154	-777		-7,693
	3,000.5801 Un/Shift		45.4633 Unit/MH		1.53	0.54	1.12	0.64	0.43		4.25

200001 F & I AGGREGATE BASE - ROADWAY **Quan: -1.63 TN** **Hrs/Shift: 12.00** **Cal: 72** **WC: NONE**

FOR BALANCE OF SHORTAGE											
<u>EP140M</u>	140 MG & D6T- Agg Place.		-0.01 CH	Prod: 150.0000 UH	Lab Pcs: -19	4.50	Eqp Pcs: 3.50				
2AGBCL5T	CL V BASE@106.5%	1.05	-1.71 TN	10.097							-19
8C84	84" smooth drum compac	1.00	-0.01 HR	49.000							
8D6T	D6TXW Cat dozer	1.00	-0.01 HR	83.000							-2
8G140	140M Cat motor grader	0.50	-0.01 HR	66.000							-2
8TWAT	Water truck	1.00	-0.01 HR	53.000							-2
LG	Laborer - GC	1.00	-0.01 MH	31.000	-2						-2
OD	Operator - Dozer	1.00	-0.01 MH	36.390	-2						-2
OG	Operator - Blade	0.50	-0.01 MH	36.390	-2						-2
OR	Operator - Compactor	1.00	-0.01 MH	30.290	-2						-2
TD	Truck Driver - Heavy High	1.00	-0.01 MH	31.000	-2						-2
\$-24.34	0.0306		-0.0500	[]	-4	-19		-2	-2		-25
	1,956.0078 Un/Shift		32.6000 Unit/MH		2.13	11.28		0.90	0.62		14.93

300000 COMMON EXCAVATION TO EXCESS **Quan: 192.72 CYEV** **Hrs/Shift: 12.00** **Cal: 72** **WC: NONE**

REDUCE COMMON EXCAVATION EXCESS BY 300.00 CYEV FOR SALVAGED BASE COURSE, 201.15 TN (107.28 CYEV) ADDED TO COMMON EXCAVATION EXCESS FOR RECLAIMED WASTE											
<u>E330EW</u>	330 Cat Exc to Waste		1.10 CH	Prod: 175.0000 UH	Lab Pcs:	5.00	Eqp Pcs: 4.00				

Direct Cost Report

Activity Resource	Description	Quantity Pcs	Unit	Unit Cost	Labor	Perm Material	Constr Mat/Exp	Equipment Ownership	Equipment Operation	Sub-Contract	Total
-------------------	-------------	--------------	------	-----------	-------	---------------	----------------	---------------------	---------------------	--------------	-------

BID ITEM = 20

Description = AS CONSTRUCTED COSTS Unit = LS Takeoff Quan: 1.000 Engr Quan: 1.000

100000 RECLAIM/REMOVE BITUMINOUS PAVEMENT **Quan: 1,932.00 TN Hrs/Shft: 12.00 Cal: 72 WC: NONE**

7", 100% RECLAIMED OR CHUNKED, REMOVED, & DISPOSED

Code	Description	Quantity	Unit	Prod	UH	Lab Pcs	Cal	WC	Eqp Pcs	Sub-Contract	Total
EF140M	140 MG-Roadway Finish	9.66	CH	200.0000			5.00		4.00		
4REC/M	MILLING/GRINDING SU	1.00	4,200.00 SY	0.800						3,360	3,360
4REC/MMOB	RECLAIMER MOBILIZAT	1.00	1.00 LS	1,100.000						1,100	1,100
5TO	TRUCKING (ONSITE)	1.00	1,932.00 TN	1.120			2,164				2,164
8B336	336F Cat excavator	1.00	9.66 HR	79.000				406	357		763
8D6N	D6NLGP Cat dozer	1.00	9.66 HR	74.000				410	305		715
8G140	140M Cat motor grader	1.00	9.66 HR	66.000				384	253		638
8L950	950M Cat wheel loader	1.00	9.66 HR	57.000				336	214		551
LG	Laborer - GC	1.00	9.66 MH	31.000		629					629
OB	Operator - Backhoe	1.00	9.66 MH	36.390		721					721
OD	Operator - Dozer	1.00	9.66 MH	36.390		721					721
OG	Operator - Blade	1.00	9.66 MH	36.390		721					721
OLC	Operator - Loader	1.00	9.66 MH	34.840		699					699
\$12,782.42	0.0250 MH/TN	48.3000	MH	[1.069]		3,492	2,164	1,536	1,130	4,460	12,782
	2,400.0000 Un/Shift		40.0000 Unit/MH			1.81	1.12	0.79	0.58	2.31	6.62

200000 F & I AGGREGATE BASE - ROADWAY **Quan: 1,811.98 TN Hrs/Shft: 12.00 Cal: 72 WC: NONE**

ALL NEW AGGREGATE WAS REQUIRED TO BE IMPORTED

Code	Description	Quantity	Unit	Prod	UH	Lab Pcs	Cal	WC	Eqp Pcs	Sub-Contract	Total
EP140M	140 MG & D6T- Agg Place.	12.07	CH	150.0000			4.50		3.50		
2AGBCL5T	CL V BASE@106.5%	1.05	1,902.58 TN	10.097		20,459					20,459
8C84	84" smooth drum compac	1.00	12.08 HR	49.000				356	236		592
8D6T	D6TXW Cat dozer	1.00	12.08 HR	83.000				588	414		1,003
8G140	140M Cat motor grader	0.50	6.04 HR	66.000				240	158		399
8TWAT	Water truck	1.00	12.08 HR	53.000				372	268		640
LG	Laborer - GC	1.00	12.08 MH	31.000		787					787
OD	Operator - Dozer	1.00	12.08 MH	36.390		902					902
OG	Operator - Blade	0.50	6.04 MH	36.390		451					451
OR	Operator - Compactor	1.00	12.08 MH	30.290		791					791
TD	Truck Driver - Heavy High	1.00	12.08 MH	31.000		804					804
\$26,827.07	0.0300 MH/TN	54.3600	MH	[1.197]		3,734	20,459	1,557	1,076		26,827
	1,801.4714 Un/Shift		33.3330 Unit/MH			2.06	11.29	0.86	0.59		14.81

Direct Cost Report

Activity Resource	Description	Pcs	Quantity Unit	Unit Cost	Labor	Perm Material	Constr Matl/Exp	Equipment Ownership	Equipment Operation	Sub-Contract	Total
BID ITEM = 20											
Description = AS CONSTRUCTED COSTS											
Unit = LS				Takeoff Quan:	1.000	Engr Quan:			1.000		
300000	F & 14" AGGREGATE BASE - TEMP. ACCESS		Quan: -343.75 TN		Hrs/Shft: 12.00	Cal: 72	WC: NONE				
CREDIT FOR TEMPORARY ACCESS AGGREGATE NOT PURCHASED											
2AGBCL5T	CL V BASE@106.5%	1.05	-360.94 TN	10.097							-3,882
\$-3,881.37				[]							-3,882
											11.29
=====> Item Totals: 20 - AS CONSTRUCTED COSTS											
\$35,728.12	102.6600 MH/LS		102.66MH	[4234.75]	7,227	16,578	2,164	3,093	2,207	4,460	35,728
35,728.120	1 LS				7,226.68	16,578.06	2,163.84	3,093.02	2,206.52	4,460.00	35,728.12

Direct Cost Report

Activity Resource	Description	Pcs	Quantity Unit	Unit Cost	Labor	Perm Material	Constr Matl/Exp	Equipment Ownership	Equipment Operation	Sub- Contract	Total
\$14,111.60	*** Report Totals ***	1.08	MH		32	15,586	-2,571	134	82	847	14,112

>>> **indicates Non Additive Activity**

-----Report Notes:-----

The estimate was prepared with TAKEOFF Quantities.
 This report shows TAKEOFF Quantities with the resources.

Bid Date: Owner: Engineering Firm:
 Estimator-In-Charge:

* on units of MH indicate average labor unit cost was used rather than base rate.

[] in the Unit Cost Column = Labor Unit Cost Without Labor Burdens

In equipment resources, rent % and EOE % not = 100% are represented as XXX%YYY where XXX=Rent% and YYY=EOE%

-----Calendar Codes-----

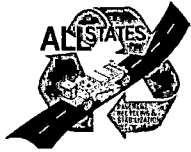
- 50 50 Hour Work Week
- 508 Five eight hour days
- 60 60 hours per week
- 72 72 Hours per week (Default Calendar)**
- 82 6 -12 hr days & 10 hr on Sun

AS BID

Pavement Removal	4,800.00	SY
% Reclaimed	0.75	%
% Removed	0.25	%
Asphalt Thickness	7.00	Inches
Aggregate Thickness	3.00	Inches
Asphalt Conversion Factor	2.07	TN/CY
Aggregate Conversion Factor	1.88	TN/CY
Total Asphalt Removed	483.00	TN
Asphalt Reclaimed	1,449.00	TN
Aggregate Reclaimed	300.00	CY
Aggregate Reclaimed	562.50	TN
Total Material Reclaimed	2,011.50	TN
Reclaiming Area	3,600.00	SY
Asphalt Removed (Chunked)	483.00	TN
Reduce Common Excavation	300.00	CY

AS CONSTRUCTED

Pavement Removal	4,800.00	SY
% Reclaimed	1.00	%
% Removed	0.00	%
Asphalt Thickness	7.00	Inches
Aggregate Thickness	0.00	Inches
Asphalt Conversion Factor	2.07	TN/CY
Aggregate Conversion Factor	1.88	TN/CY
Total Asphalt Removed	0.00	TN
Asphalt Reclaimed	1,932.00	TN
Aggregate Reclaimed	0.00	CY
Aggregate Reclaimed	0.00	TN
Total Material Reclaimed	1,932.00	TN
Reclaiming Area	4,800.00	SY
Asphalt Removed (Chunked)	0.00	TN
Reduce Common Excavation	0.00	CY



14045 Northdale Blvd
 Rogers MN 55374
 (763) 241-1596

Progressive Billing

Application: 1

Period: 08/22/2017

Owner: Meyer Contracting, Inc.
 11000 93rd Ave N
 Maple Grove MN 55369

Job Location: Levee Project - West Fargo

APRS Job #: 655317

Customer #:

Application For Payment On Contract

Total Complete to Date	<u>4,460.00</u>
Total Retained	<u>0.00</u>
Total Earned Less Retained	<u>4,460.00</u>
Less Previous Billings	<u>0.00</u>
Current Payment Due	<div style="border: 1px solid black; padding: 2px;">4,460.00</div>

Contractor's Certification of Work

The undersigned contractor certifies that, to the best of the contractor's knowledge, the work on the above named job has been completed in accordance with the plans and specifications to the level of completion indicated on the attached schedule of completion.

Kelli Mitchell

Date: 8/22/17

171297

Oxbow

Fargo

Thank you for your prompt payment.

Schedule of Work Completed

Bid Itm	Description	Price	Unit	Total Contract Units	Previous Units Billed	Current Units Complete	Total Units Complete	Previous Value	Current Value	Total Value
1	Mobilization	1,100.00	Each	1.0000		1.00	1.00		1,100.00	1,100.00
2	Full Depth Reclamation	0.80	SY	2,100.0000		2,100.00	2,100.00		1,680.00	1,680.00
3	Extra Depth Charge	0.80	SY	2,100.0000		2,100.00	2,100.00		1,680.00	1,680.00
Totals:				4,460.00					4,460.00	4,460.00

U:\PROJECTS\17035104_Levee_Ring_Phase_WP\43D\30000 - Planning & Engineering & Design\30AA0 - Engineering & Design\CAD_BIM_Sheets\FMM43D_CD301.dgn
 Plot
 6/27/2017 1:54:20 PM

D
 C
 B
 A

1

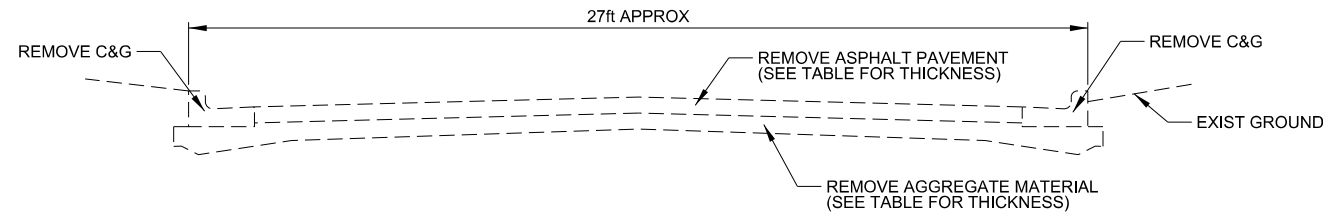
2

3

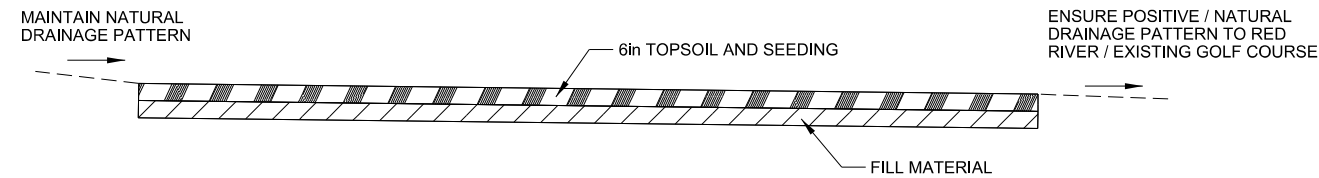
4

5

This document was originally issued and sealed by Christopher M. Gross, Registration No. PE-7496, on 06/27/17 and the original document is stored at CH2M Hill Engineering, Inc., Fargo, N.D.



1
 CD104
 CD106
 CD110
 CD111
 CD112
TYPICAL SECTION ROAD REMOVAL
 NOT TO SCALE

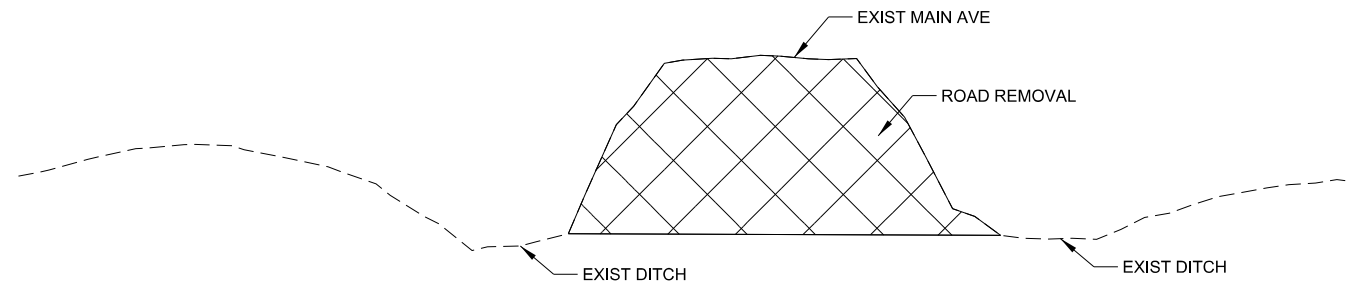


2
 CD104
 CD106
 CD110
 CD111
 CD112
TYPICAL SECTION ROAD FILL
 NOT TO SCALE

STREET NAME	EXISTING ASPHALT THICKNESS	EXISTING AGGREGATE SURFACE
OXBOW DRIVE	5in TO 10.25in	8in
SCHNELL DRIVE	12.5in	0
RIVERBEND ROAD	4in TO 5in	1in TO 6in
MAIN AVE	8in	8in

NOTE:

- CONTRACTOR SHALL ENSURE DRAINAGE FROM EXISTING ROADWAY IS POSITIVE TOWARDS THE RED RIVER. THIS MAY REQUIRE CONSTRUCTING A SWALE TO PROVIDE DRAINAGE TO THE RED RIVER.
- SWALE LOCATIONS SHALL BE ALONG THE CURRENT STORM SEWER OUTFALL LOCATIONS ALONG SCHNELL DRIVE AND RIVERBEND ROAD.



3
 CD113
TYPICAL SECTION FOR MAIN AVE ROAD REMOVAL
 NOT TO SCALE

NOTE:

- REMOVE ROAD SUBGRADE TO THE DEPTH OF ADJACENT DITCH GRADE ALONG MAIN AVENUE.



OXBOW - HICKSON - BAKKE RING LEVEE - PHASE CD
 WORK PACKAGE 43CD
 CASS COUNTY, NORTH DAKOTA
 TYPICAL SECTIONS - ROAD REMOVAL AND FILL

COORDINATE SYSTEM (HORIZONTAL CONTROL)
 NAD 83 (2007)
 ND SPCS: SOUTH ZONE - US SURVEY FEET
 COMBINED SCALE FACTOR (CSF): 0.999900290

ELEVATION DATUM (VERTICAL CONTROL)
 NAVD 88
 GEOID09

DATE:	06/02/2017
REVISED:	06/27/2017
REVISED:	
RECORD:	
FILE NAME:	FMM43D_CD301.dgn
PROJECT No.	1014-230
DRAWN BY:	JDE
CHECKED BY:	CMG
PROJ. MANAGER:	CMG
PROJ. DESIGNER:	MV

CD301



January 19, 2018

Christopher M Gross, PE, CFM
Moore Engineering, Inc.
925 10th Avenue East
West Fargo, ND 58078

Subject: Oxbow-Hickson-Bakke Ring Levee-Phases C and D; Work Package 43CD
Change Order Request - Temporary Sanitary Sewer Forcemain Bypass

Dear Mr. Gross,

Due to multiple unforeseeable conditions, Meyer Contracting was required to temporarily bypass the 6" & 8" sanitary forcemains away from the Highway 81 embankment area at the levee crossing so the existing lines can be removed under the levee and the road raise and paving can be completed on schedule. In change order notice sent on 9/28/17, Meyer submitted forward pricing of estimated cost; the price presented at the 1/16/18 meeting with Chris Gross is actual cost incurred during this sequence of work.

Costs incurred by Meyer Contracting for this work totaled \$32,062.65. At the 1/16/18 meeting, Meyer proposed a reduced price of \$10,000.00.

Based on the aforementioned information and calculation of cost impact we hereby request additional compensation in the amount of \$10,000.00. Additionally, we believe this had a schedule impact of four calendar days and we request that the contract time be adjusted as such. Thank you.

Respectfully,

A handwritten signature in blue ink, appearing to read 'Jeremy Gibbs', is written over a light blue horizontal line.

Jeremy Gibbs
Meyer Contracting, Inc.

Work Change Directive Summary of Costs

Meyer Project Number: 171297
Owner Contract Number: WP-43CD
Owner Contract Name: Oxbow-Hickson-Bakke Ring Levee - Phases C & D
Change Order Request Number: 9000017
Change Order Request Name/Desc.: TEMP SANITARY REROUTE

LABOR ONLY

TOTAL: \$8,418.83

SUBSTANCE

	Unit	Quantity	Unit Cost		
(Use \$75 for MN & \$120 for ND)	10.83-HR Day/Person	12.93	\$120.00		TOTAL: \$1,551.25

EQUIPMENT w/OPERATOR

TOTAL: \$9,225.50

MATERIALS & RENTAL EQUIPMENT

Description	Unit	Quantity	Unit Cost	Tax (%)	Total Cost
FERGUSON - 0262721	LS	1.00	\$8,758.56	7.500	\$9,415.45
FERGUSON - 0263183	LS	1.00	\$1,251.49	7.500	\$1,345.35
FERGUSON - 0262721-1	LS	1.00	\$871.20	7.500	\$936.54
					\$0.00
					\$0.00
Management & Overhead (10%)					\$1,169.73
TOTAL:					\$12,867.08

SUBCONTRACTORS

Description	Unit	Quantity	Unit Cost	Total Cost
				\$0.00
				\$0.00
				\$0.00
				\$0.00
				\$0.00
Management & Overhead (10%)				\$0.00
TOTAL:				\$0.00

MOBILIZATION

Description	Unit	Quantity	Unit Cost	Total Cost
				\$0.00
Management & Overhead (10%)				\$0.00
TOTAL:				\$0.00

TOTAL: \$32,062.65

FERGUSON®

WATERWORKS

1917 1ST AVE N
FARGO, ND 58102-4118

Please contact with Questions: 888-873-5685

INVOICE NUMBER	TOTAL DUE	CUSTOMER	PAGE
0262721	\$9,415.47	1564	1 of 1

**PLEASE REFER TO INVOICE NUMBER WHEN
MAKING PAYMENT AND REMIT TO:**

FERGUSON WATERWORKS #2516
PO BOX 802817
CHICAGO, IL 60680-2817

3221 1 AB 0.403 E0081X I0145 D2902724019 S2 P4702425 0001:0001



MEYER CONTRACTING INC
11000 93RD AVE N
MAPLE GROVE MN 55369-4113

SHIP TO:

MEYER CONTRACTING
HWY 81 AND 1ST AVE
OXBOW, ND 58047

SHIP WHSE.	SELL WHSE.	TAX CODE	CUSTOMER ORDER NUMBER	SALESMAN	JOB NAME	INVOICE DATE	BATCH
2516	2518	ND239	OHB PARTS	CWJ	6 & 8 C900	10/03/17	10-14525

ORDERED	SHIPPED	ITEM NUMBER	DESCRIPTION	UNIT PRICE	UM	AMOUNT
			THANK YOU FOR YOUR BUSINESS!			
1	1	R306090572	8X2 IP SS DBL BLT SDL 8.63-9.05	86.884	EA	86.88
1	1	R306069072	6X2 IP SS DBL BLT SDL 6.50-6.90	83.351	EA	83.35
2	0	SP-HWWAR20316150K	2 HENRY PRATT SEWAGE AIR RELEASE VL		EA	0.00
4	4	GBRNKM	LF 2X3 BRS NIP GBL	10.651	EA	42.60
2	2	FNWX410CK	LF 2 BRS 600# WOG 2PC THRD FP BV	62.285	EA	124.57
8	8	MJGAU	6 MJ GSKT	4.020	EA	32.16
8	8	MJGAX	8 MJ GSKT	4.824	EA	38.59
36	36	SS4TBOFN	3/4X3-1/2 SS 304 T-BLT ONLY	2.680	EA	96.48
36	36	S4HNF	3/4 SS 304 HEX NUT	0.452	EA	16.27
8	8	SSLCE6	6 PVC WDG REST GLND *ONELOK	24.186	EA	193.49
8	8	SSLCE8	8 PVC WDG REST GLND *ONELOK	35.759	EA	286.07
4	4	MJ9LAU	6 MJ C153 90 BEND L/A	54.450	EA	217.80
4	4	MJ9LAX	8 MJ C153 90 BEND L/A	79.200	EA	316.80
500	500	DR18BPU	6 C900 DR18 PVC GJ BLUE PIPE	5.194	FT	2597.00
500	500	DR18BPX	8 C900 DR18 PVC GJ BLUE PIPE	8.983	FT	4491.50
INVOICE SUB-TOTAL						8623.56
DELIVERY						135.00
TAX Horace						656.91

LEAD LAW WARNING: IT IS ILLEGAL TO INSTALL PRODUCTS THAT ARE NOT "LEAD FREE" IN ACCORDANCE WITH US FEDERAL OR OTHER APPLICABLE LAW IN POTABLE WATER SYSTEMS ANTICIPATED FOR HUMAN CONSUMPTION. PRODUCTS WITH *NP IN THE DESCRIPTION ARE NOT LEAD FREE AND CAN ONLY BE INSTALLED IN NON-POTABLE APPLICATIONS. BUYER IS SOLELY RESPONSIBLE FOR PRODUCT SELECTION.

Go Paperless - Upgrade to Email Delivery!

You'll receive one email per day with all your invoices attached as a PDF. Contact us with your email address today.



Call us at the number above to switch to email delivery today!

TERMS: NET 10TH PROX	ORIGINAL INVOICE	TOTAL DUE	\$9,415.47
----------------------	------------------	-----------	------------

All past due amounts are subject to a service charge of 1.5% per month, or the maximum allowed by law, if lower. If Buyer fails to pay within terms, then in addition to other remedies, Buyer agrees to pay Seller all costs of collection, including reasonable attorney fees. Complete terms and conditions are available upon request or at http://woiseleyna.com/terms_conditionsSale.html and are incorporated by reference. Seller may convert checks to ACH.

FERGUSON®

WATERWORKS

1917 1ST AVE N
FARGO, ND 58102-4118

Please contact with Questions: 888-873-5685

INVOICE NUMBER	TOTAL DUE	CUSTOMER	PAGE
0263183	\$1,345.36	1564	1 of 1

**PLEASE REFER TO INVOICE NUMBER WHEN
MAKING PAYMENT AND REMIT TO:**

FERGUSON WATERWORKS #2516
PO BOX 802817
CHICAGO, IL 60680-2817

1591 1 AB 0.403 E0078X I0132 D2921452719 S2 P4722679 0001:0001

SHIP TO:



MEYER CONTRACTING INC
HWY 81 AND 1ST ST
OXBOW, ND 58047



MEYER CONTRACTING INC
11000 93RD AVE N
MAPLE GROVE MN 55369-4113

SHIP WHSE.	SELL WHSE.	TAX CODE	CUSTOMER ORDER NUMBER	SALESMAN	JOB NAME	INVOICE DATE	BATCH
2516	2516	ND239	OHB PARTS ADD	CWJ	OXBOW	10/10/17	IO 14595

ORDERED	SHIPPED	ITEM NUMBER	DESCRIPTION	UNIT PRICE	UM	AMOUNT
			Thank you for your business.			
1		1 R306090572	8X2 IP SS DBL BLT SDL 8.63-9.05	86.884	EA	86.88
1		1 R306069072	6X2 IP SS DBL BLT SDL 6.50-6.90	83.351	EA	83.35
2		2 SP-HWWAR20316150K	2 HENRY PRATT SEWAGE AIR RELEASE VL	435.600	EA	871.20
4		4 GBRNKM	LF 2X3 BRS NIP GBL	10.651	EA	42.60
2		2 FNWX410CK	LF 2 BRS 600# WOG 2PC THRD FP BV	62.285	EA	124.57
INVOICE SUB-TOTAL						1208.60
FREIGHT						42.89
TAX Horace						93.87

LEAD LAW WARNING: IT IS ILLEGAL TO INSTALL PRODUCTS THAT ARE NOT "LEAD FREE" IN ACCORDANCE WITH US FEDERAL OR OTHER APPLICABLE LAW IN POTABLE WATER SYSTEMS ANTICIPATED FOR HUMAN CONSUMPTION. PRODUCTS WITH *NP IN THE DESCRIPTION ARE NOT LEAD FREE AND CAN ONLY BE INSTALLED IN NON-POTABLE APPLICATIONS. BUYER IS SOLELY RESPONSIBLE FOR PRODUCT SELECTION.

Go Paperless - Upgrade to Email Delivery!

You'll receive one email per day with all your invoices attached as a PDF. Contact us with your email address today.



Call us at the number above to switch to email delivery today!

TERMS: NET 10TH PROX	ORIGINAL INVOICE	TOTAL DUE	\$1,345.36
----------------------	------------------	-----------	------------

All past due amounts are subject to a service charge of 1.5% per month, or the maximum allowed by law, if lower. If Buyer fails to pay within terms, then in addition to other remedies, Buyer agrees to pay Seller all costs of collection, including reasonable attorney fees. Complete terms and conditions are available upon request or at http://wolseleyna.com/terms_conditionsSale.html and are incorporated by reference. Seller may convert checks to ACH.

FERGUSON®

WATERWORKS

1917 1ST AVE N
FARGO, ND 58102-4118

Please contact with Questions: 888-873-5685

INVOICE NUMBER	TOTAL DUE	CUSTOMER	PAGE
0262721-1	\$936.54	1564	1 of 1

**PLEASE REFER TO INVOICE NUMBER WHEN
MAKING PAYMENT AND REMIT TO:**

FERGUSON WATERWORKS #2516
PO BOX 802817
CHICAGO, IL 60680-2817

3630 1 AB 0.403 E0109X I0187 D2924990977 S2 P4724671 0001:0001



MEYER CONTRACTING INC
11000 93RD AVE N
MAPLE GROVE MN 55369-4113

SHIP TO:

MEYER CONTRACTING
HWY 81 AND 1ST AVE
OXBOW, ND 58047

SHIP WHSE.	SELL WHSE.	TAX CODE	CUSTOMER ORDER NUMBER	SALESMAN	JOB NAME	INVOICE DATE	BATCH
2516	2518	ND239	OHB PARTS	CWJ	6 & 8 C900	10/10/17	IO 14602

ORDERED	SHIPPED	ITEM NUMBER	DESCRIPTION	UNIT PRICE	UM	AMOUNT
2	2	SP-HWWAR20316150K	2 HENRY PRATT SEWAGE AIR RELEASE VL	435.600	EA	871.20
INVOICE SUB-TOTAL						871.20
TAX						65.34
<p>LEAD LAW WARNING: IT IS ILLEGAL TO INSTALL PRODUCTS THAT ARE NOT "LEAD FREE" IN ACCORDANCE WITH US FEDERAL OR OTHER APPLICABLE LAW IN POTABLE WATER SYSTEMS ANTICIPATED FOR HUMAN CONSUMPTION. PRODUCTS WITH *NP IN THE DESCRIPTION ARE NOT LEAD FREE AND CAN ONLY BE INSTALLED IN NON-POTABLE APPLICATIONS. BUYER IS SOLELY RESPONSIBLE FOR PRODUCT SELECTION.</p>						

Go Paperless - Upgrade to Email Delivery!

You'll receive one email per day with all your invoices attached as a PDF. Contact us with your email address today.



Call us at the number above to switch to email delivery today!

TERMS: NET 10TH PROX	ORIGINAL INVOICE	TOTAL DUE	\$936.54
----------------------	------------------	-----------	----------

All past due amounts are subject to a service charge of 1.5% per month, or the maximum allowed by law, if lower. If Buyer fails to pay within terms, then in addition to other remedies, Buyer agrees to pay Seller all costs of collection, including reasonable attorney fees. Complete terms and conditions are available upon request or at http://wolseley.com/terms_conditionsSale.html and are incorporated by reference. Seller may convert checks to ACH.



November 27, 2017

Mr. Christopher M Gross, Project Manager
Moore Engineering, Inc.
925 10th Ave E
Fargo, ND 58078

Subject: Oxbow-Hickson-Bakke Ring Levee-Phases C and D; Work Package 43CD
Change Order Request – Casing Delay

Dear Mr. Gross,

Due to the natural disaster that caused widespread devastation to much of Texas, hereinafter referred to as Hurricane Harvey, material that was purchased for use in the sanitary force main, as well as the Cass County water main were delayed. Delays produced by Hurricane Harvey have caused work activities to lag from anticipated installation dates.

The timeline for the 16” and 18” casing procurement are as follows:

08/03/17	Submittals received from vendor
08/06/17	Submittal 33 30 00.10-004 001 submitted
08/10/17	Submittal response received
08/10/17	18” casing material order placed
09/13/17	16” casing material order placed
09/25/17	18” casing material delivered
09/25/17	Welding began on 18” casing
09/30/17	16” casing material delivered
09/30/17	Welding began on 16” casing
10/14/17	18” casing installed
10/27/17	16” casing installed

As described in the enclosed letter from the supplier, the aftermath of Hurricane Harvey adversely affected manufacturing of this casing, resulting in an additional 29 calendar days added to the procurement. Had Hurricane Harvey not been a factor, material would have been completed on August 27th.

Based on the aforementioned information and calculation of the time impact, we believe these delays had a schedule impact of 29 calendar days and we request that the contract time be adjusted as such.

Thank you.

Respectfully,



A handwritten signature in blue ink, appearing to read 'Jeremy Gibbs', is positioned below the logo.

Jeremy Gibbs
Meyer Contracting, Inc.



2350 County Road C. Suite #150

Roseville, MN 55113

Ph: 651-638-5075

Fax: 651-638-3500

10/24/2017

Ref: Oxbow ND Stl Casing FBE Pipe Project

Jeremy,

When this pipe was first quoted the lead time was 10 days for standard FBE OD coated pipe for both 16 and 18" which did not include the extra week for special ID 646PW paint. After the Hurricane hit it took a week for me to get a reply from the Pipe manufacture to expedite the 18" order. Several Coaters were running way behind quoting 4-6 weeks for the FBE coating due to the storm. Had the special ID paint not been required we could have saved a week on delivering both sizes. I believe JD Fields did a great job getting this pipe out considering the conditions in Houston. The Storm did limit the # of Coaters available to perform this work so Force Majeure certainly would apply for this pipe order.

Hopefully everything worked out for you on this project and we look forward to working with you in the future.

Sincerely,

Dave Hanson

Ferguson Enterprises

Outside Sales



January 17, 2018

Christopher M Gross, PE, CFM
Moore Engineering, Inc.
925 10th Avenue East
West Fargo, ND 58078

Subject: Oxbow – Hickson – Bakke Ring Levee – Phases C and D; Work Package 43CD
Change Order Request – Relocate Oxbow Water Main for 54” RCP

Dear Mr. Gross,

During installation of the 54” RCP storm sewer east of Cass County Highway 81, the elevation of the existing 3” Cass County Rural water line conflicted with the elevation of the proposed storm sewer line. Please see attached diagram and picture for reference.

Based on the aforementioned information and calculation of cost impact we hereby request additional compensation in the amount of \$5,052.38. Additionally, we believe this had a schedule impact of one calendar day and we request that the contract time be adjusted as such.

Thank you.

Respectfully,

A handwritten signature in blue ink, appearing to read 'Jeremy Gibbs', is written over a light blue circular stamp.

Jeremy Gibbs
Meyer Contracting, Inc.



FROM RIGHT TO LEFT:

EXISTING GATE VALVE: 8" PVC

8 X 6 REDUCER

6" PVC

6 X 3 REDUCER

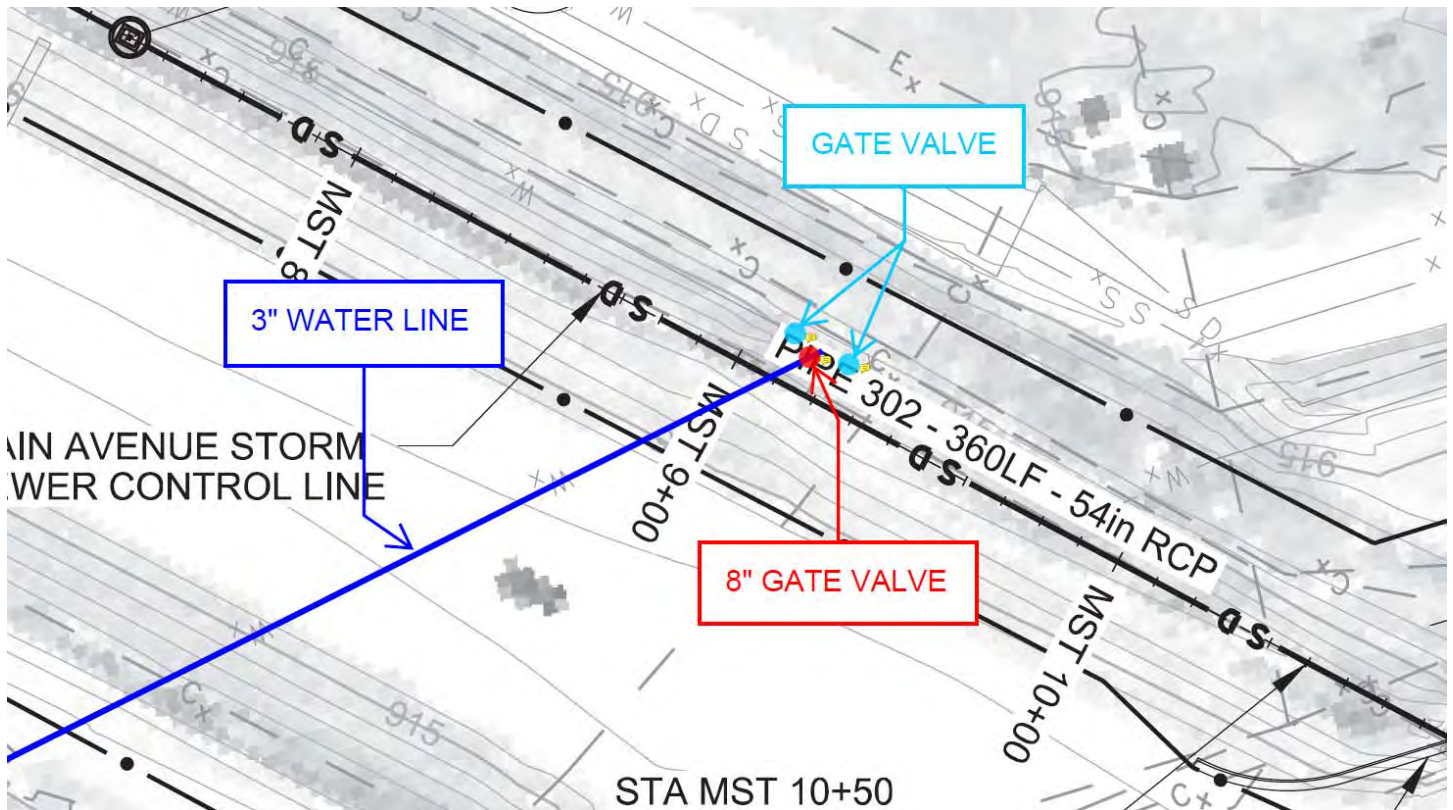
3" PVC

3" BEND

3" PVC

3" BEND

3" PVC



- EXISTING 3" CASS COUNTY RURAL WATER LINE ENTERED 8" GATE VALVE (NOT SHOWN ON PLANS)
- WATER LINE HAD TO BE REMOVED IN ORDER FOR 54" RCP STORM SEWER TO BE INSTALLED
- FROM EXISTING 8" GATE VALVE, WATER LINE HAD TO BE REDUCED FROM 8" TO 6", AND THEN AGAIN FROM 6" TO 3"
- NEW 3" LINE THEN ANGLED UP AND OVER INSTALLED 54" RCP TO CONNECT TO EXISTING LINE

Work Change Directive Summary of Costs

Meyer Project Number: 171297
Owner Contract Number: WP-43CD
Owner Contract Name: Oxbow-Hickson-Bakke Ring Levee - Phases C & D
Change Order Request Number: 9000024
Change Order Request Name/Desc.: Relocate Oxbow WM for 54" RCP

LABOR ONLY

TOTAL: \$2,114.85

SUBSTANCE

	Unit	Quantity	Unit Cost		
(Use \$75 for MN & \$120 for ND)	10.83-HR Day/Person	3.37	\$120.00		TOTAL: \$404.43

EQUIPMENT w/OPERATOR

TOTAL: \$2,282.50

MATERIALS & RENTAL EQUIPMENT

Description	Unit	Quantity	Unit Cost	Tax (%)	Total Cost
DAKOTA SUPPLY GROUP	LS	1.00	\$211.92	7.500	\$227.81
					\$0.00
					\$0.00
					\$0.00
					\$0.00
Management & Overhead (10%)					\$22.78
TOTAL:					\$250.60

SUBCONTRACTORS

Description	Unit	Quantity	Unit Cost	Total Cost
				\$0.00
				\$0.00
				\$0.00
				\$0.00
				\$0.00
Management & Overhead (10%)				\$0.00
TOTAL:				\$0.00

MOBILIZATION

Description	Unit	Quantity	Unit Cost	Total Cost
				\$0.00
Management & Overhead (10%)				\$0.00
TOTAL:				\$0.00

TOTAL: \$5,052.38

INVOICE DATE	INVOICE NO.
10/23/17	D421365

R
E
M
I
T
T
O

DAKOTA SUPPLY GROUP
 SDS 12-2439
 PO BOX 86
 MINNEAPOLIS, MN. 55486-2439
 701-237-9440



Type: 77

Page 01

DATE ORDERED	DATE SHIPPED	PICK TICKET NO.	WRITTEN BY	CUSTOMER PURCHASE ORDER NO.	JOB NUMBER	JOB NAME
10/23/17	10/23/17	D421365	JSA	171297	171297	OXBOW LEVEE

SOLD TO: MEYER CONTRACTING INC
 032243 11000 93RD AVE NORTH
 MAPLE GROVE, MN 55369

SHIP TO: CUSTOMER PICKUP
 4557 15th Ave North
 Fargo, ND 58102

	DESCRIPTION		QUANTITY ORDERED	UNIT MSR	QUANTITY B/O	QUANTITY SHIPPED	UNIT PRICE	PER	AMOUNT
001	2P2GJ 2 CL200 PVC PIPE GJ 20' SDR21 NORTHERN PIPE PRODUCTS INC	021503	40	FT		40	0.58	FT	23.20
002	86MJRDL 8 X 6 MJ DI RDCR L/ACC TYLER UNION	022543	1	EA		1	44.59	EA	44.59
003	63MJRDL 6 X 3 MJ DI RDCR L/ACC SIGMA CORPORATION	135732	1	EA		1	34.32	EA	34.32
004	CMKNT98 8 MJ PVC STARGRIP RESTRAINT 4000 STAR PIPE PRODUCTS	135687	1	EA		1	38.38	EA	38.38
005	3P445GJ 3" BEND 45 PVC IPS GJ 122-030 (622-030) THE HARRINGTON CORPORATION	021597	2	EA		2	31.12	EA	62.24
006	8MJGK 8" MJ PLAIN RUBBER GSKT TYLER UNION	022419	1	EA		1	2.62	EA	2.62
007	6MJGK 6" MJ PLAIN RUBBER GSKT TYLER UNION	022418	2	EA		2	2.19	EA	4.38
008	3MJGKTR 3 MJ TRANSITION GSKT	022423	1	EA		1	2.19	EA	2.19

Thank You!

A SERVICE CHARGE OF UP TO 1.5% (18% ANNUAL) IS MADE ON PAST DUE ACCOUNTS.

			SUBTOTAL	
			OTHER TAX	
			TAX	
SHIPPED VIA	SHIPPED FROM	DUE DATE	INVOICE TOTAL	
			CONTINUED	

Please note our remittance address is for PAYMENTS ONLY. All other correspondence should be sent to your local DSG branch.
 Save time and money: Dakota Supply Group Inc. offers ACH payments and electronic invoicing by fax or email
 Please contact us if you are interested!

INVOICE DATE	INVOICE NO.
10/23/17	D421365

R
E
M
I
T
T
O

DAKOTA SUPPLY GROUP
 SDS 12-2439
 PO BOX 86
 MINNEAPOLIS, MN. 55486-2439
 701-237-9440



Type: 77

Page 02

DATE ORDERED	DATE SHIPPED	PICK TICKET NO.	WRITTEN BY	CUSTOMER PURCHASE ORDER NO.	JOB NUMBER	JOB NAME
10/23/17	10/23/17	D421365	JSA	171297	1 171297	OXBOW LEVEE

SOLD TO: MEYER CONTRACTING INC
 032243 11000 93RD AVE NORTH
 MAPLE GROVE, MN 55369

SHIP TO: CUSTOMER PICKUP
 4557 15th Ave North
 Fargo, ND 58102

DESCRIPTION	QUANTITY ORDERED	UNIT MSR	QUANTITY B/O	QUANTITY SHIPPED	UNIT PRICE	PER	AMOUNT
TYLER UNION YOUR BUSINESS IS APPRECIATED. PLEASE CALL IF WE CAN BE OF ASSISTANCE. THANK YOU.							
<i>Thank You!</i>							
A SERVICE CHARGE OF UP TO 1.5% (18% ANNUAL) IS MADE ON PAST DUE ACCOUNTS.							
SUBTOTAL							211.92
OTHER							.00
7.500 TAX							00 15.90
INVOICE TOTAL							227.82
SHIPPED VIA	SHIPPED FROM		DUE DATE				
PICKUP	COUNTER-FARGO WATER EQ		11/25/17				

Please note our remittance address is for PAYMENTS ONLY. All other correspondence should be sent to your local DSG branch.
 Save time and money: Dakota Supply Group Inc. offers ACH payments and electronic invoicing by fax or email
 Please contact us if you are interested!



November 7, 2017

Christopher M Gross, PE, CFM
Moore Engineering, Inc.
925 10th Avenue East
West Fargo, ND 58078

Subject: Oxbow – Hickson – Bakke Ring Levee – Phases C and D; Work Package 43CD
Move Topsoil Piles for WM Contractor

Dear Mr. Gross,

Meyer was required to move topsoil stockpiles in the area between Cass County Highway 81 & the north borrow pit for Abbott, Arne, Schwindt, Inc to install a new watermain.

Based on the aforementioned information and calculation of cost impact we hereby request additional compensation in the amount of \$3,558.72. Additionally, we believe this had a schedule impact of one calendar day and we request that the contract time be adjusted as such.

Thank you.

Respectfully,

A handwritten signature in blue ink, appearing to read 'Jeremy Gibbs', is written over a light blue horizontal line.

Jeremy Gibbs
Meyer Contracting, Inc.

Work Change Directive Summary of Costs

Meyer Project Number: 171297
Owner Contract Number: WP-43CD
Owner Contract Name: Oxbow-Hickson-Bakke Ring Levee - Phases C & D
Change Order Request Number: 9000028
Change Order Request Name/Desc.: Move Piles of Topsoil for WM Contractor

LABOR ONLY

TOTAL: \$50.50

SUBSTANCE

	Unit	Quantity	Unit Cost	
(Use \$75 for MN & \$120 for ND) 10.83-HR Day/Person		0.83	\$120.00	TOTAL: \$99.72

EQUIPMENT w/OPERATOR

TOTAL: \$3,408.50

MATERIALS & RENTAL EQUIPMENT

Description	Unit	Quantity	Unit Cost	Tax (%)	Total Cost
					\$0.00
					\$0.00
					\$0.00
					\$0.00
					\$0.00
Management & Overhead (10%)					\$0.00
TOTAL:					\$0.00

SUBCONTRACTORS

Description	Unit	Quantity	Unit Cost	Total Cost
				\$0.00
				\$0.00
				\$0.00
				\$0.00
				\$0.00
Management & Overhead (10%)				\$0.00
TOTAL:				\$0.00

MOBILIZATION

Description	Unit	Quantity	Unit Cost	Total Cost
				\$0.00
Management & Overhead (10%)				\$0.00
TOTAL:				\$0.00

TOTAL: \$3,558.72



January 19, 2018

Christopher M Gross, PE, CFM
Moore Engineering, Inc.
925 10th Avenue East
West Fargo, ND 58078

Subject: Oxbow – Hickson – Bakke Ring Levee – Phases C and D; Work Package 43CD
Change Order Request – Additional Material Cost for FM

Dear Mr. Gross,

Additional pipe for the Sanitary Force Main had to be purchased resulting from the overrun quantity of 6” and 8” PVC. Due to the economic impacts of Hurricane Harvey, Meyer Contracting’s supplier encountered increased prices of SDR26 PVC pipe. The timeline for the series of events is detailed below:

- 9/25/17: Discovered 6” and 8” PVC from bid items 132 and 133 would over run
- 9/25/17: Additional PVC ordered (invoice H860883)
- 10/19/17: Additional PVC ordered (invoice H963711)
- 10/30/17: Notice received from Core & Main that pricing went up due to Hurricane Harvey

Based on the aforementioned information and calculation of cost impact we hereby request additional compensation in the amount of \$2,031.71.

Thank you.

Respectfully,

A handwritten signature in blue ink, appearing to read 'Jeremy Gibbs', is written over a light blue horizontal line.

Jeremy Gibbs
Meyer Contracting, Inc.



INVOICE

1830 Craig Park Court
St. Louis, MO 63146

Invoice #	H860883
Invoice Date	9/29/17
Account #	125425
Sales Rep	SCOTT SMITH
Phone #	763-428-7473
Branch #243	St Michael, MN
Total Amount Due	\$11,157.34

Remit To:
CORE & MAIN LP
PO BOX 28330
ST LOUIS, MO 63146

MEYER CONTRACTING INC 000/0000
11010 93RD AVE N STE A 00000
MAPLE GROVE MN 55369-4125

Shipped To:
INT:US HWY 81 & OXBOW DRIVE
SITE CONTACT:
BRIAN-763 203 4485
OXBOW, ND

CUSTOMER JOB- OXBOW OXBOW,ND-LEVEE

Thank you for the opportunity to serve you! We appreciate your prompt payment.

Date Ordered	Date Shipped	Customer PO #	Job Name	Job #	Bill of Lading	Shipped Via	Invoice#
9/25/17	9/27/17	SEE BELOW	OXBOW,ND-LEVEE	OXBOW	171297	BEST WAY	H860883

Product Code	Description	Quantity		Price	UM	Extended Price
		Ordered	Shipped			
	CUSTOMER PO#- EXTRA 6"&8" IPS SDR26					
	CORE & MAIN PO#- 8363976					
0306026	6 IPS DR26 PVC PIPE PR160 BID SEQ# 30	1400	1400	2.78000 FT		3,892.00
0308026	8 IPS DR26 PVC PIPE PR160 BID SEQ# 40	1400	1400	4.73000 FT		6,622.00

Freight Delivery Handling Restock Misc

Subtotal: 10,514.00
Other: .00
Tax: 643.34
Invoice Total: \$11,157.34

Terms: NET 30
Ordered By: BRIAN

This transaction is governed by and subject to Core & Main's standard terms and conditions, which are incorporated by reference and accepted.
To review these terms and conditions, please visit: <http://waterworks.hdsupply.com/TandC>



INVOICE

1830 Craig Park Court
St. Louis, MO 63146

Invoice # H963711
Invoice Date 10/20/17
Account # 125425
Sales Rep SCOTT SMITH
Phone # 763-428-7473
Branch #243 St Michael, MN
Total Amount Due \$4,670.99

Remit To:
CORE & MAIN LP
PO BOX 28330
ST LOUIS, MO 63146

MEYER CONTRACTING INC
11010 93RD AVE N STE A
MAPLE GROVE MN 55369-4125

000/0000
00000

Shipped To:
INT:US HWY 81 & OXBOW DRIVE
SITE CONTACT:
BRIAN-763 203 4485
OXBOW, ND

CUSTOMER JOB- OXBOW OXBOW,ND-LEVEE

Thank you for the opportunity to serve you! We appreciate your prompt payment.

Date Ordered	Date Shipped	Customer PO #	Job Name	Job #	Bill of Lading	Shipped Via	Invoice#
10/16/17	10/16/17	SEE BELOW	OXBOW,ND-LEVEE	OXBOW	171297	WILL CALL	H963711

Product Code	Description	Quantity		B/O	Price	UM	Extended Price
		Ordered	Shipped				

CUSTOMER PO#- EXTRA 6" & 8" IPS SDR26

CORE & MAIN PO#- 8396089

0306026	6 SDR26 PR160 PVC PIPE(G) BID SEQ# 30	560	560		2.78000 FT		1,556.80
0308026	8 SDR26 PR160 PVC PIPE(G) BID SEQ# 40	600	600		4.73000 FT		2,838.00

Freight Delivery Handling Restock Misc

Subtotal: 4,394.80
Other: .00
Tax: 276.19

Terms: NET 30
Ordered By: BRIAN

Invoice Total: \$4,670.99

This transaction is governed by and subject to Core & Main's standard terms and conditions, which are incorporated by reference and accepted.
To review these terms and conditions, please visit: <http://waterworks.hdsupply.com/TandC>

Bid Proposal for Meyer-OHB Ring Levee - Working Copy

Bid #: 360335

Seq#	Qty	Descrip. on	Units	Price	Ext Price
1920	4	24" GALV FLARED END SECTION	EA	102.00	408.00
1940		SANITARY SEWER FM RELOCATION			
1960		ITEM #132			
1970	2800	6" SDR26 CL160 PVC PIPE	FT	2.51	7,028.00
1980	3500	12 GAUGE GREEN DB TRACER WIRE	FT	0.16	560.00
2000		ITEM #133			
2010	2800	8" SDR26 CL160 PVC PIPE	FT	4.17	11,676.00
2020	3500	12 GAUGE GREEN DB TRACER WIRE	FT	0.16	560.00
2040		ITEM #134			
2050		SANITARY MANHOLE - TYPE "E":			
2060	4	6" MEGAFLANGE W/GSKT & SS B&N	EA	157.42	629.68
2070	4	8" MEGAFLANGE W/GSKT & SS B&N	EA	222.40	889.60
2080	2	6" X 1'0" FLG X FLG DIP PC	EA	155.75	311.50
2090	2	8" X 1'0" FLG X FLG DIP PC	EA	229.30	458.60
2100	2	6" FLANGE WYE PC	EA	176.28	352.56
2110	2	8" FLANGE WYE PC	EA	289.80	579.60
2120	2	6" BLIND FLANGE PC TAPT 2"	EA	59.42	118.84
2130	2	8" BLIND FLANGE PC TAPT 2"	EA	90.31	180.62
2140	4	2" X 1-1/2" BRASS HEX BUSHING	EA	9.58	38.32
2150	4	1-1/2" X CL BRASS NIPPLE	EA	5.40	21.60
2160	4	1-1/2" FIP BRASS BALL VALVE	EA	35.16	140.64
2170	4	1-1/2" PART "F" ALUM ADAPTER	EA	5.61	22.44
2180	4	1-1/2" PART "DC" ALUM DUST CAP	EA	8.85	35.40
2190	4	6" SEAL-TITE FLANGE GASKET	EA	4.56	18.24
2200	4	8" SEAL-TITE FLANGE GASKET	EA	6.34	25.36
2210	64	3/4" X 3-1/2" SS HEX BOLT	EA	2.28	145.92
2220	64	3/4" SS HEX NUT	EA	0.54	34.56
2230	2	4" X 30" INSULATION PAD	EA	87.22	174.44
2240	2	R-1733 SANITARY MH CASTING	EA	291.21	582.42
2250	2	27" MANHOLE SEAL	EA	141.64	283.28
2260	2	TRACER WIRE LD BOX- WATER	EA	27.93	55.86
2270	4	12" X 8" STEEL WALL SLEEVE	EA	202.12	808.48
2280	4	10" X 8" STEEL WALL SLEEVE	EA	152.52	610.08
2290	28	LS-400-S LINK SEAL	EA	10.26	287.28
2300	64	LINK SEAL LS-360-SS	EA	15.04	962.56
2320		ITEM #136			
2330		CONNECT TO EX FORCE MAIN:			
2340	2	6" HYMAX COUPLING	EA	210.31	420.62
2350	2	8" HYMAX COUPLING	EA	237.44	474.88
2370		ITEM #137			
2380	2	6" FLG PLUG VALVE W/HANDWHEEL	EA	1,071.23	2,142.46
2400		ITEM #138			

** For reference only - not included in total



January 8, 2018

Christopher M Gross, PE, CFM
Moore Engineering, Inc.
925 10th Avenue East
West Fargo, ND 58078

Subject: Oxbow – Hickson – Bakke Ring Levee – Phases C and D; Work Package 43CD
Change Order Request – Additional Grading at Schnell & Oxbow

Dear Mr. Gross,

Meyer Contracting was asked to perform additional grading on the east side of the levee adjacent to Schnell Avenue and Oxbow Drive.

Based on the calculation of cost impact we hereby request additional compensation in the amount of \$1,426.48. Additionally, we believe this had a schedule impact of one half of a calendar day and we request that the contract time be adjusted as such.

Thank you.

Respectfully,

A handwritten signature in blue ink, appearing to read 'Jeremy Gibbs', is written over a light blue horizontal line.

Jeremy Gibbs
Meyer Contracting, Inc.

Work Change Directive Summary of Costs

Meyer Project Number: 171297
Owner Contract Number: WP-43CD
Owner Contract Name: Oxbow-Hickson-Bakke Ring Levee - Phases C & D
Change Order Request Number: 9000033
Change Order Request Name/Desc.: ADDITIONAL GRADING AT SCHNELL DRIVE

LABOR ONLY

TOTAL: \$0.00

SUBSTANCE

	Unit	Quantity	Unit Cost		
(Use \$75 for MN & \$120 for ND)	10.83-HR Day/Person	0.55	\$120.00		
					TOTAL: \$66.48

EQUIPMENT w/OPERATOR

TOTAL: \$1,360.00

MATERIALS & RENTAL EQUIPMENT

Description	Unit	Quantity	Unit Cost	Tax (%)	Total Cost
					\$0.00
					\$0.00
					\$0.00
					\$0.00
					\$0.00
Management & Overhead (10%)					\$0.00
TOTAL:					\$0.00

SUBCONTRACTORS

Description	Unit	Quantity	Unit Cost	Total Cost
				\$0.00
				\$0.00
				\$0.00
				\$0.00
				\$0.00
Management & Overhead (10%)				\$0.00
TOTAL:				\$0.00

MOBILIZATION

Description	Unit	Quantity	Unit Cost	Total Cost
				\$0.00
Management & Overhead (10%)				\$0.00
TOTAL:				\$0.00

TOTAL: \$1,426.48



January 19, 2018

Christopher M Gross, PE, CFM
Moore Engineering, Inc.
925 10th Avenue East
West Fargo, ND 58078

Subject: Oxbow – Hickson – Bakke Ring Levee – Phases C and D; Work Package 43CD
Change Order Request – Wanzek Freight Charges

Dear Mr. Gross,

Additional cost due to expediting the delivery of the sluice gates was incurred by Wanzek Construction. The timeline of events is detailed below.

- 12/12/17: Direction was given to expedite the delivery on the sluice gates during the weekly progress meeting
- 12/12/17: After the meeting, Kodru Mooney was contacted to expedite the delivery of the sluice gates
- 12/19/17: After business hours, Wanzek was contacted and informed that gates no longer needed to be expedited

Being that the shipment was scheduled for pickup on 12/20/17, and direction to cancel expediting was given after business hours the day prior to shipment, this order was not able to be cancelled, and therefore, additional freight charges were incurred.

Based on the aforementioned information and calculation of cost impact we hereby request additional compensation in the amount of \$769.65.

Thank you.

Respectfully,

A handwritten signature in blue ink, appearing to read 'Jeremy Gibbs', is written over a light blue horizontal line.

Jeremy Gibbs
Meyer Contracting, Inc.

9. Contract Modifications:

-
-
-

10. Last week and this week's discussion items:

- Topsoil will be addressed in the Spring. Will work on this until work stops for the year.
- Homeowners concerns – cap stone (will take some time to match up and cut, Todd said it would be done by (Saturday, Dec 2nd), the remaining sump pump hoses (will be done this week).
- Transition structure, needs to be flexible grout. Meyer has placed an order for this. Waiting on delivery.
- Jeff brought up, at the intersection of Hwy 81 and Main Avenue, the northeast quadrant, there is water just sitting there. Chris said that they have dirt in the bottom of the ditch yet. Ditch needs to be reshaped and graded out a little bit. Virgil says the water is there because of the cofferdam constructed. The clumps on the east side have been broken up, and the cofferdam removed.
- The cradles will need to be excavated and extended next spring. If any cracking appears over the winter, Meyer will accept responsibility and replace if needed.
- Sluice Gates need to be moved to critical path, in order to ensure the safety of the residents in the event of a shutdown.

11. Last week and this week's action items:

- House on Riverbend - Schmidt and Son's to move. To be out before it interferes with any work in Progress, House will be moved (TBD). Todd has spoken to Bob, House is hopefully moved off site by the end of the week. Due to weather, it may not be possible to backfill the hole to meet the specs. If so, fluff material will have to be used to fill the hole for the winter, and it will need to be refilled and compacted in the spring.
- Follow up on Sluice Gates



Invoice

Date	Invoice #
12/29/2017	15384
P.O. Number	Terms
1244.004	Net 30

B
I
L
L
T
O

Wanzek
 2028 2nd Ave NW
 West Fargo, ND 58078

S
H
I
P
T
O

Wanzek
 2028 2nd Ave NW
 West Fargo, ND 58078

Ship Date	Carrier	Tracking No.	Kodru Job #
7/7/2017	FFA		OHB Phase C,D
Quantity	Description	Price Each	Amount
	REF: Quote# 26565		
1	Gatewell Items Qty 1 Series 955 Slide Gate 84"W x 84"H Qty 2 Series 955 Slide Gate 60"W x 60"H Qty 4 Series 452 16" diameter Flap Gate	73,683.00	73,683.00T
1	Pump Station Items Qty 1 Series 925 Slide Gate 66"W x 66"H	13,168.00	13,168.00T
1	Heavy Duty Flap Gate Qty 1 Series 452 59" x 15" Stainless Steel Flap Gate	2,205.00	2,205.00T
1	Additional Freight	733.00	733.00T
	<p style="color: red;">Additional Freight due to Owner requesting the gates early due to site shutdown, \$733.00. Additional 1% tax due to site shutdown and delivery to Fargo instead of Oxbow, \$897.89.</p>		

PLEASE REMIT PAYMENT TO:

KODRU-MOONEY
 3650 N. CHESTNUT ST.
 SUITE 102
 CHASKA, MN 55318

Phone: (952) 479-1045
 Fax: (952) 843-5603

Subtotal	\$89,789.00
Sales Tax (7.5%)	\$6,734.18
Balance Due	\$96,523.18