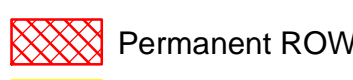

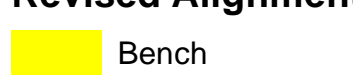
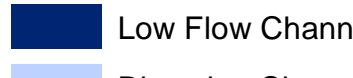
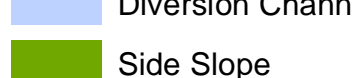
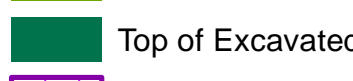
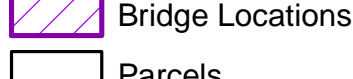

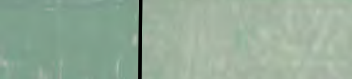
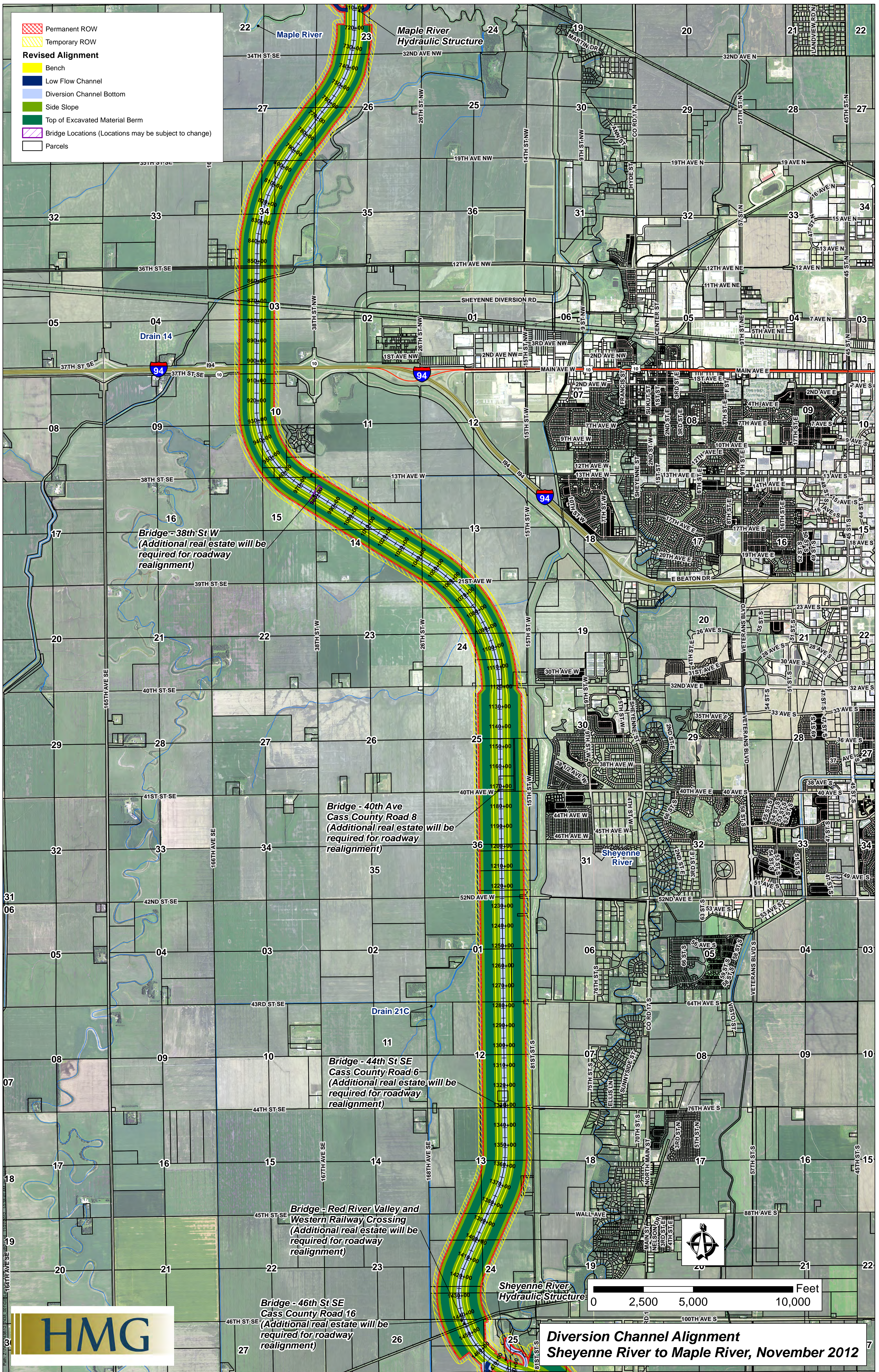


-  Permanent ROW
-  Temporary ROW
- Revised Alignment**
-  Bench
-  Low Flow Channel
-  Diversion Channel Bottom
-  Side Slope
-  Top of Excavated Material Berm
-  Bridge Locations (Locations may be subject to change)
-  Parcels



Drain 14

Bridge - 38th St W
(Additional real estate will be required for roadway realignment)

Bridge - 40th Ave
Cass County Road 8
(Additional real estate will be required for roadway realignment)

Bridge - 44th St SE
Cass County Road 6
(Additional real estate will be required for roadway realignment)

Bridge - Red River Valley and
Western Railway Crossing
(Additional real estate will be required for roadway realignment)

Bridge - 46th St SE
Cass County Road 16
(Additional real estate will be required for roadway realignment)

Diversion Channel Alignment
Sheyenne River to Maple River, November 2012

