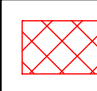








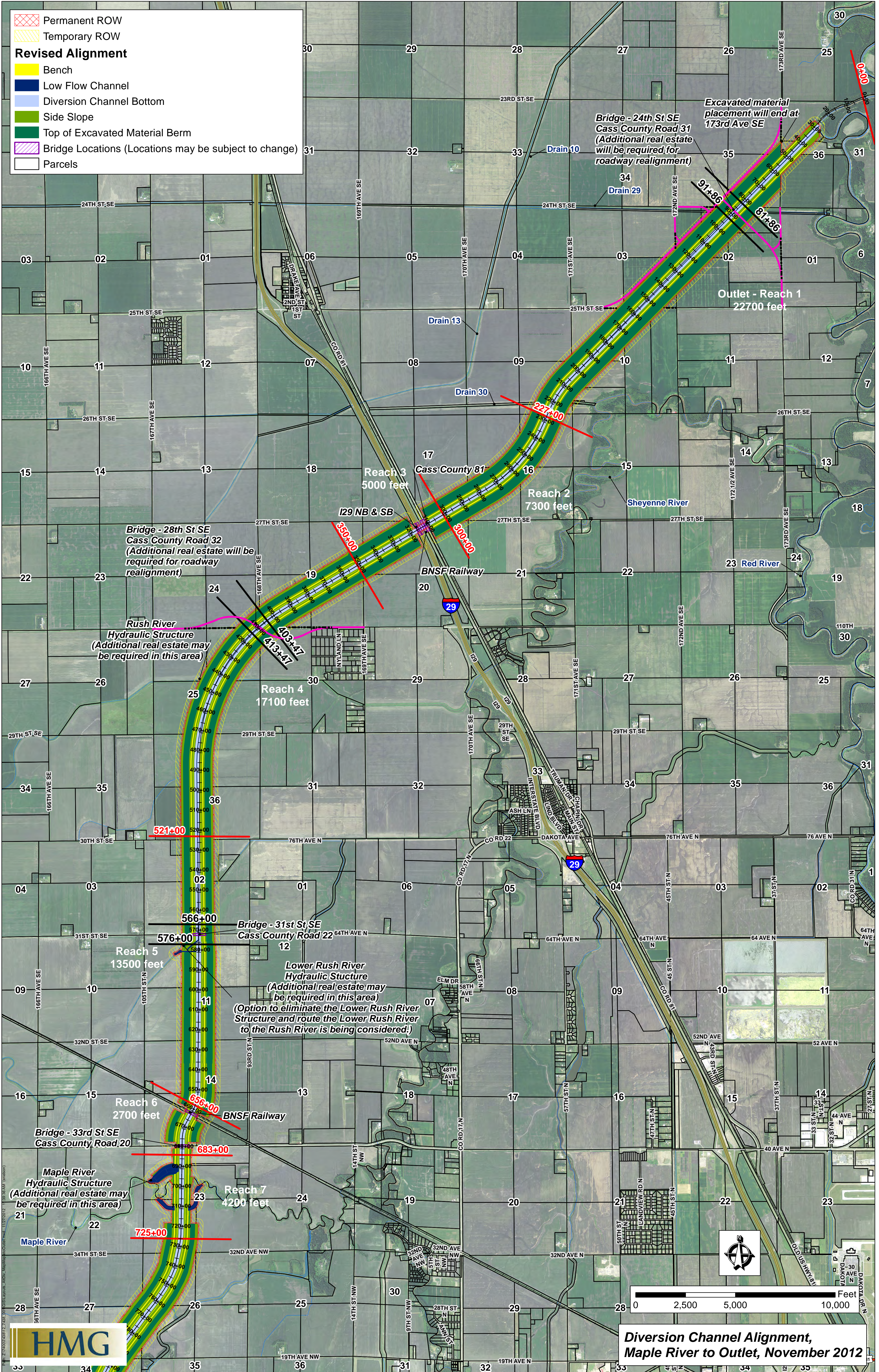


-  Permanent ROW
-  Temporary ROW
- Revised Alignment**
-  Bench
-  Low Flow Channel
-  Diversion Channel Bottom
-  Side Slope
-  Top of Excavated Material Berm
-  Bridge Locations (Locations may be subject to change)
-  Parcels



**Diversion Channel Alignment, Maple River to Outlet, November 2012**

