

Flood Diversion Authority November Board Meeting

Project Delivery - Monthly Summary

Presented by

Program Management Consultant

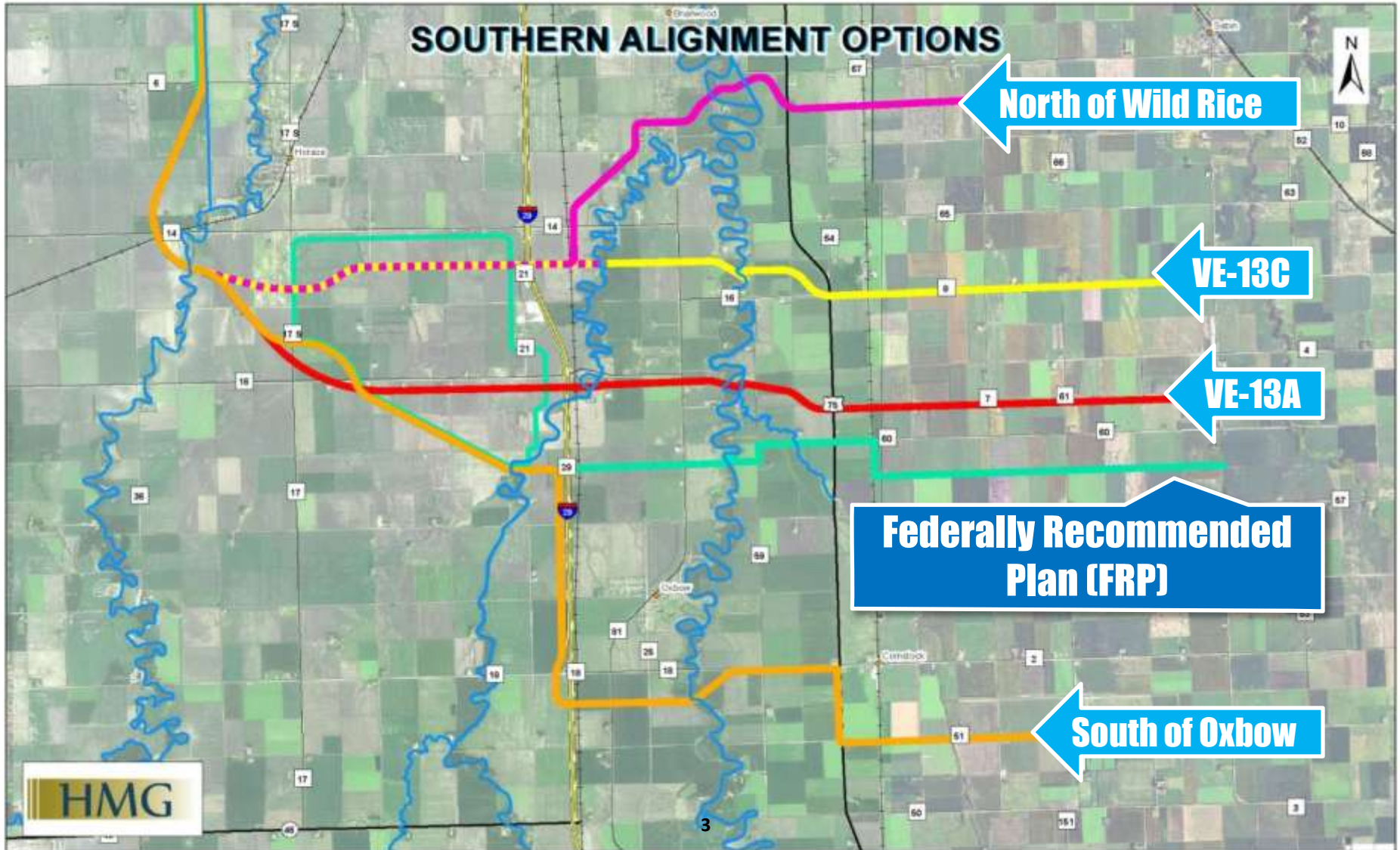
November 8, 2012

Southern Alignment Preferred Option VE-13A

💧 Post-feasibility analyses evaluated the following Southern alignment options:

1. *Value Engineering #13 - Option A (VE-13A)*
2. *Value Engineering #13 - Option C (VE-13C)*
3. *North of the Wild Rice/Red River confluence*
4. *South of Oxbow*

Southern Alignment Options



Southern Alignment Preferred Option VE-13A

💧 The advantages of the VE-13A option over VE-13C include:

1. *Fewer residential structures impacted (with or without levees for the Oxbow and Comstock areas)*
2. *Fewer newly impacted residential structures*
3. *Fewer businesses impacted*
4. *Greater estimated cost savings*

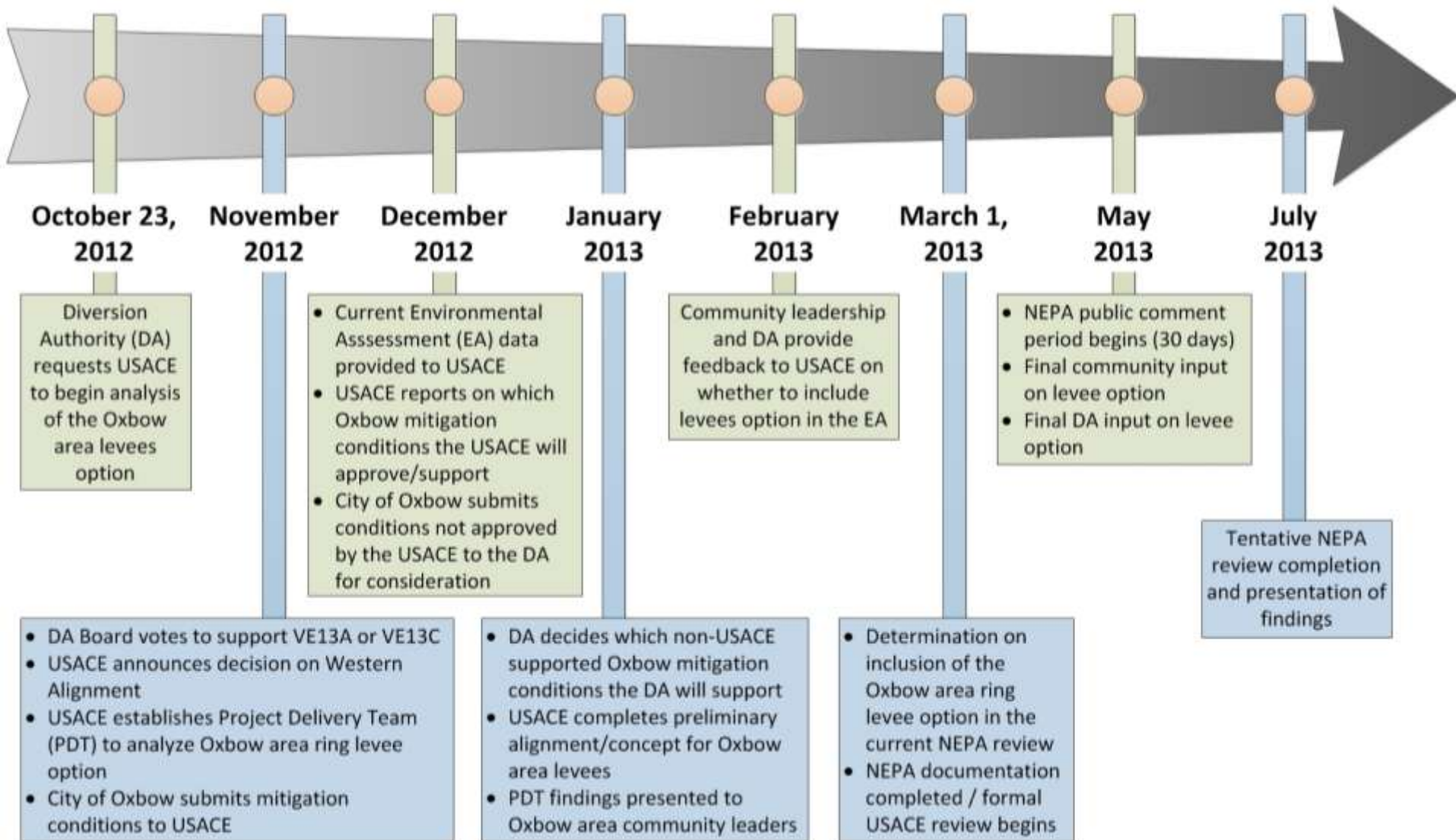
Southern Alignment Preferred Option VE-13A

- The two Diversion Authority's technical teams recommend VE-13A option:
 - *Technical Advisory Staff (TAC)*
 - *Local Sponsor Local Consultant Technical Team (LSLCTT)*

Southern Alignment Preferred Option VE-13A

- Item 4.c Decision Paper No. 20 – Post Feasibility alternative alignment recommendation

Oxbow Area Levee Analysis and NEPA Timeline



HMG Task Order Amendments

💧 Task Orders 2, 3, and 4

- *Period of performance extended to June 30, 2013*

💧 Task Order 5

- *Adds additional QA/QC review, bundled modeling and mapping, and Summary Technical Memorandum*
- *period of performance extended to December 31, 2012*

💧 Task Order 6

- *Adds update of draft real estate cost estimate*

HMG Task Order Amendments and New Task Order

💧 Task Orders 8

- *Reach 1 Low Flow Channel (LFC) – RVR modeling*

💧 Task Order 9

- *Tributary peak modeling*
- *Assistance for the Maple River Aqueduct Physical Model*
- *Support Corps modeling of the Probable Maximum Flood*

New HMG Task Order 13 – Levee Design and Design Support

💧 Red River Levees

Preliminary Engineering for In Town Levees

💧 Upstream Staging Area Levees/Ring Dikes

Design Support

HMG Task Order Amendments and New Task

Houston-Moore Group Task Order Summary

Increased
Amount (\$)

Task Order No. 2 - Amendment 1 Design of Work Package 2 (CR-31 Bridge)	0
Task Order No. 3 - Amendment 1 Design of Work Package 4 (Reach 3)	0
Task Order No. 4 - Amendment 1 Design of Work Package 7 (CR-32 and CR-22 Bridges)	0
Task Order No. 5 – Amendment 2 Post Feasibility Engineering Analysis	40,000
Task Order No. 6 – Amendment 2 Land Management Services	90,000
Task Order No. 8 – Amendment 2 Work-In-Kind	0
Task Order No. 9 – Amendment 2 Hydrology and Hydraulic Modeling	95,000
Task Order No. 13 - Levee Design and Design Support	475,000

Total

650,000

Minnesota Department of Natural Resources Amendment

Minnesota Department of Natural Resources	Increased Amount (\$)
Amendment 1 - Complete Scoping Phase of the EIS	115,550
Total	115,550

Period of performance is extended to February 1, 2014

Existing HMG Task Order Status Update

- 💧 Task Order 1 - Design Project Management
 - *Develop supporting data and participate in meetings*
 - *Project Management, Project Controls, QA/QC*
- 💧 Task Order 2 - Work Package 2 (CR31)
 - *90% design submittal scheduled for end of November*
- 💧 Task Order 3 - Work Package 4 (Reach 3)
 - *90% design submittal scheduled for December*
- 💧 Task Order 4 - Work Package 7 (CR-32 and CR-22)
 - *90% design submittal scheduled for end of November*

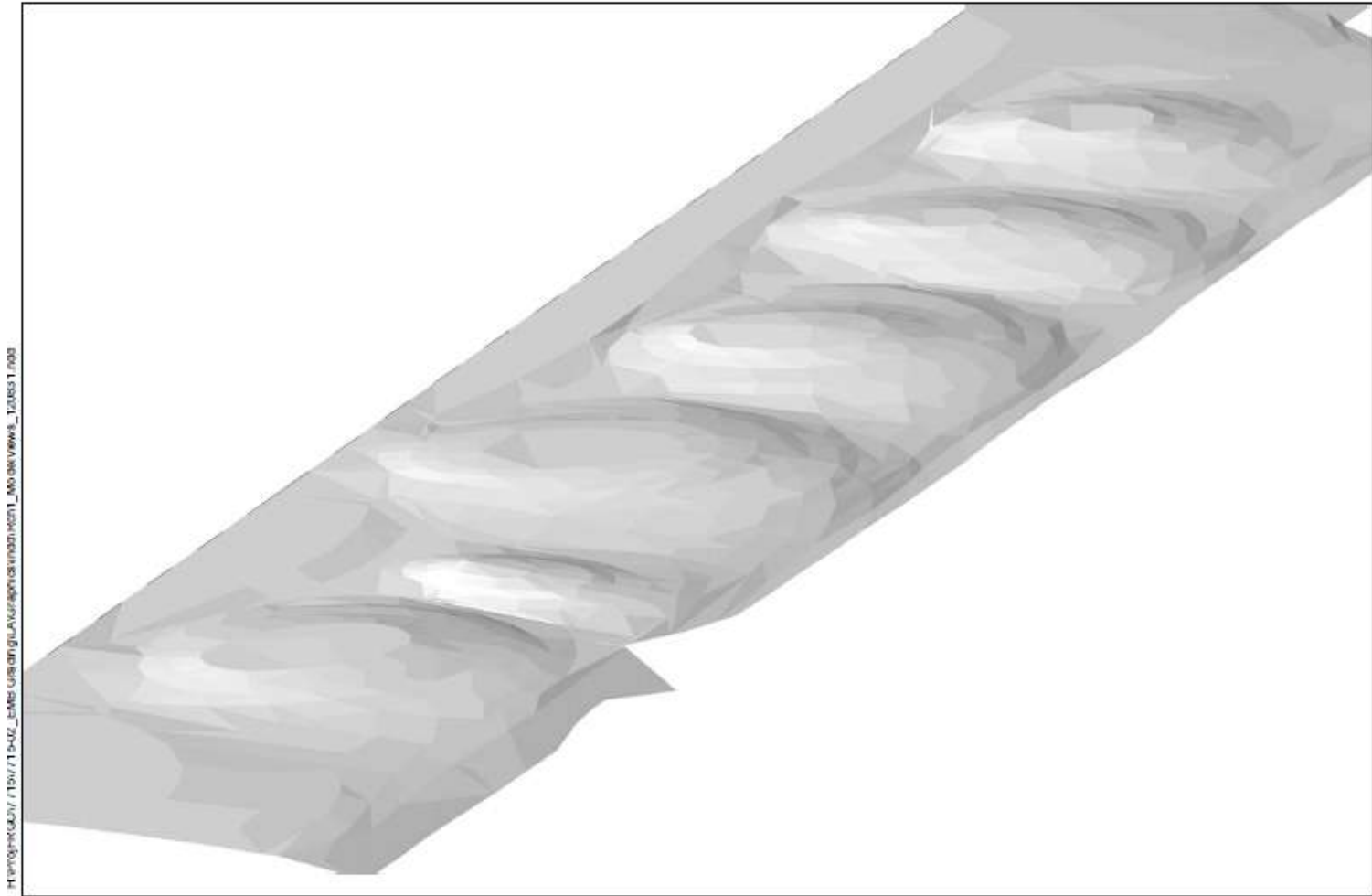
Typical County Bridge



Existing HMG Task Order Status Update

- 💧 Task Order 5 – Post Feasibility Engineering Analysis
 - *VE-13 and Associated Studies completed*
 - *Summary Technical Memorandum in December*
- 💧 Task Order 6 – Land Management Services
 - *Hardship Acquisitions, on-going ROEs*
- 💧 Task Order 7 - Recreation and Use Master Plan
 - *Undulating EMB grading design for Reach 1 and Bridge Work Packages - initial drafts completed*

EMB Undulating Berm



M:\projects\1759\1759-02-emb-urg\glau\app\embankment_ModelViews_120611.rvt



Representative View 1
FM Diversion- Reach 1 Draft Undulating EMB Grading

Figure 1



Existing HMG Task Order Status Update

- 💧 Task Order 8 - Work-In-Kind (WIK)
 - *Reach 1 LFC meander modeling completed*
 - *Evaluations Completed: EMB openings, local drainage, gated inlet, maximum project design flows*
- 💧 Task Order 9 – Hydrology and Hydraulic Modeling
 - *Inlet modeling updates, extended geometry of Rush/Lwr Rush*
 - *Support for Maple River Aqueduct physical modeling*
- 💧 Task Order 10 – Utilities Design and Identification
 - *Maple River to Outlet relocation plan completed*

Existing HMG Task Order Status Update

- 💧 Task Order 11 - Work Package 11 (CR-20 and Reach 6)
 - *Just starting Preliminary Design work*
- 💧 Task Order 12 - Work Package 13 (CR-10 and Channel)
 - *Just starting Preliminary Design work*