



# Flood Diversion Board of Authority Meeting

---

Thursday, Aug. 11, 2016



# August 2016 Report

---

Presented By:

Program Management Consultant

# July Major Activities/Accomplishments

---

- ▶ PPA Signed
- ▶ P3 RFQ Advertised
- ▶ ND State Water Commission Briefing



# August and September Priority Areas

---

- ▶ P3 RFQ – Respond to RFIs
- ▶ Preparation of P3 RFP
- ▶ MN Dam Safety Permit Information
- ▶ In Town Levee Construction
- ▶ Flowage Easement Development
- ▶ Phase 1 Land Acquisition



# In Town Levees

WP-42A.1/A.3 (4<sup>th</sup> St. N Pump Station) – August 2016

---

- ▶ Box culvert concerns resolved, repairs complete
- ▶ Conducting pump and gate testing this week
- ▶ Anticipate pump station operational late-Aug or early-Sep





# In Town Levees

WP-42A.2 (2<sup>nd</sup> St. Pump Station) – August 2016

---

- ▶ Pump station now operational
- ▶ Conducted excavation for north screen wall
- ▶ Remaining work to be completed by Fall 2016 (screen wall, fence, bollards)



# In Town Levees

WP-42F.1S (2<sup>nd</sup> St. Flood Control, South) – August 2016

---

- ▶ Began utilities installation in intersection of 1<sup>st</sup> Ave and 3<sup>rd</sup> St
- ▶ Continued removal of contaminated soils in Case Plaza Lot
- ▶ Continued floodwall construction and 2<sup>nd</sup> St paving



# In Town Levees

WP-42F.1N (2<sup>nd</sup> St. Flood Control, North) – August 2016

---

- ▶ Continued floodwall and storm/sanitary sewer installation
- ▶ Began work on 2<sup>nd</sup> St retaining wall





# In Town Levees

WP-42C.1 (Howard Johnson Demolition)

WP-42C.2 (Park East Demolition) – August 2016

---

- ▶ 42C.1 completed last remaining work last month (door installation in Fargo Public School renovation)
- ▶ Both projects in contract close-out process



# In Town Levees

WP-42H.2 (El Zagal Phase 2) – August 2016

---

- ▶ Curb, gutter, sidewalk installation on Elm St and Park Building access road
- ▶ Paving for Trefoil Park access
- ▶ Continued levee construction
- ▶ Installed removable floodwall footings





# In Town Levees

## WP-42I.1 (Mickelson Levee Extension) – August 2016

---

- ▶ Removed existing underground utilities
- ▶ Installed storm sewer
- ▶ Installed sidewalk, curb, and gutter
- ▶ Excavated inspection trench



# In Town Levees

WP-42F.2 (Flood Control, 2<sup>nd</sup> St. S) – August 2016

- ▶ Removed pavement on 2<sup>nd</sup> St south
- ▶ Began work on storm water outfall to river
- ▶ Excavated inspection trench





# Next

---

- ▶ Corps of Engineers Report



# *Fargo-Moorhead Metropolitan Flood Risk Management Project*

*Flood Diversion Board of Authority meeting  
August 11, 2016*



# PPA Signing – July 11, 2016





# Diversion Inlet Structure

- 3 Tainter gates
- Pile foundation
- 3-4 year construction
  
- Request for Proposals (RFP) issued 11 July
- Low Price/Technically Acceptable
- Unrestricted
- Proposals due 25 August
- Contract award expected in early October



View of Inlet Structure (Looking Downstream from the Embankment Area) - GATES DOWN



Inlet Structure - Aesthetic Treatments

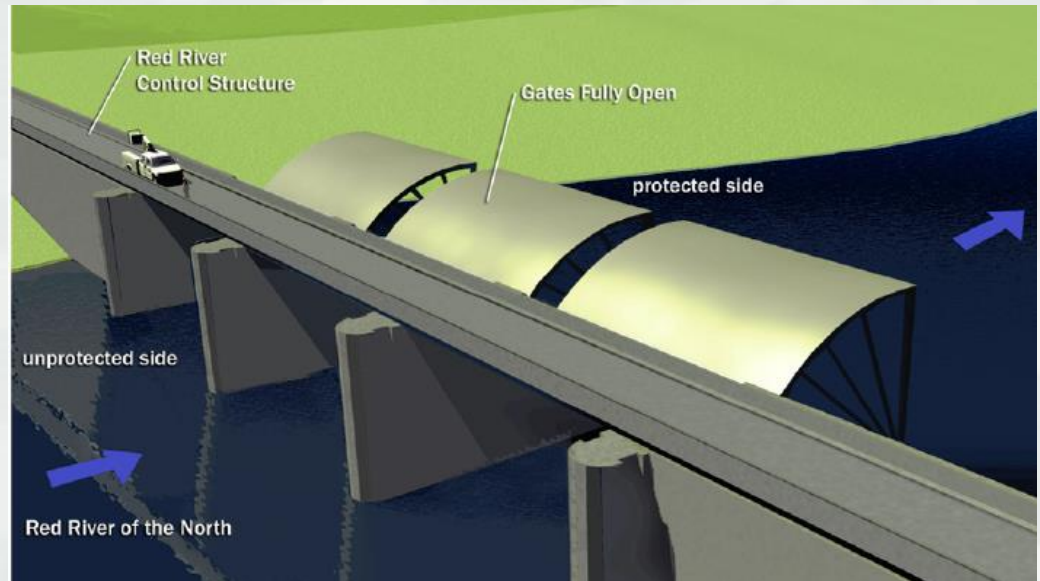
February 9, 2016





# Wild Rice River Control Structure

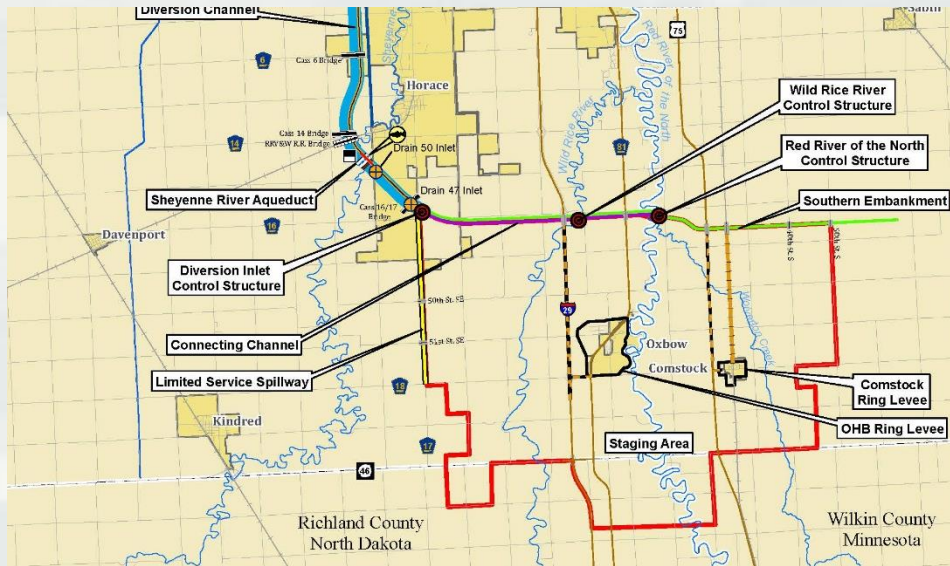
- ▶ Started detailed design in May 2016
- ▶ Goal is to award construction contract in FY 2018
- ▶ 2 Tainter Gates: 30 ft x 30 ft
- ▶ 100-year flow: 6000 cfs



Red River Control Structure visualization (gates open-project not in operation)



# Southern Embankment Design

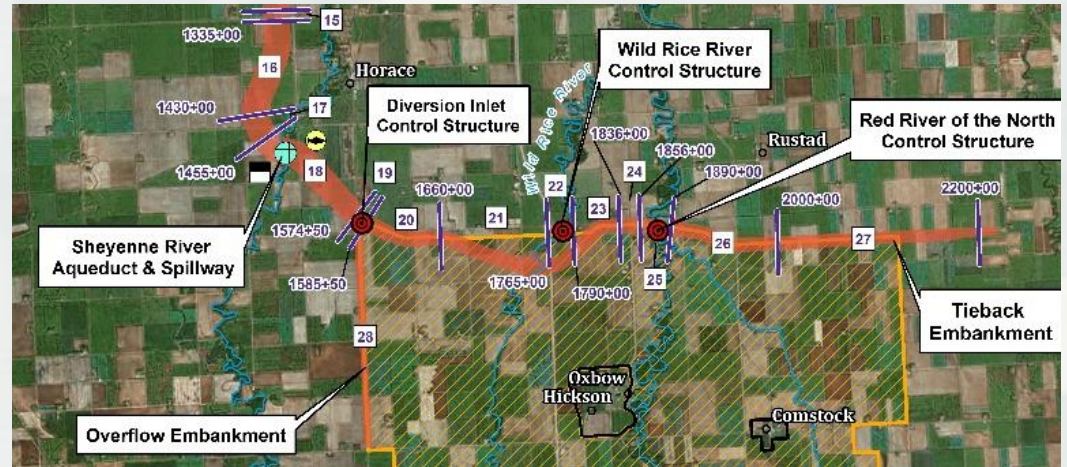


- Kick-Off Meeting held Aug 4
  - ▶ Complete 35% design in 2017
  - ▶ 12 miles of embankments
  - ▶ 6-mile connecting channel between the Inlet and Red River Control Structure
  - ▶ Limited Service Spillway

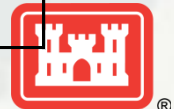


# Southern Embankment Reaches

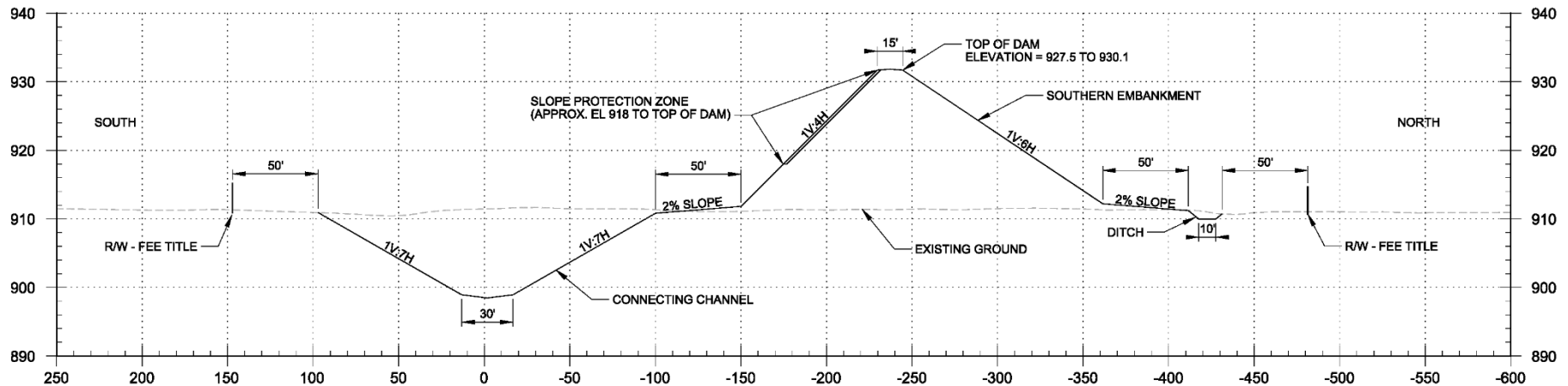
- ▶ Design using Corps Criteria for Dams
- ▶ Likely bid as 6 separate construction contracts, starting in 2020



Embankment	Reach	Total Embankment Length (ft)
MN Embankment Reach 26 (MN)	Reach 26	11,000
MN Embankment Reach 27 (MN)	Reach 27	10,000
ND Embankment Reach 23 (ND)	Reach 23	6,000
ND Embankment Reach 20 (ND)	Reach 20	8,100
ND Embankment Reach 21 (ND)	Reach 21	10,500
ND Overflow Embankment Reach 28 (ND)	Reach 28	22,521



# Southern Embankment



Inlet Structure to Wild Rice River  
<20' Dam Embankment Height

- ▶ Typical Cross sections between Inlet and Wild Rice Control Structure
- ▶ Includes Connecting Channel
- ▶ Approx. 3,800,000 CY impervious fill
- ▶ Approx. 500,000 CY topsoil





# Chief of Engineers Visit

---

► August 23, 2016



Lt. General Todd T. Semonite



# Project Path Forward

---

- Continue to support state permitting processes
- Prepare designs for future Federal construction contracts in FY 17 and FY18.
- Support sponsors P3 procurement



**BUILDING STRONG®**

# Up Next

- Administrative and Legal



**BUILDING STRONG®**



# Administrative/Legal

---





# August 2016 Recommended Contracting Actions

---

Presented By:

Program Management Consultant

# 2016 Program Budget Status

July 1, 2016 – July 31, 2016 (In Thousands)

FY16 Budget Category	Total Working Budget	Outstanding Encumbrances	Paid FY to Date	Encumbered and Paid Year to Date	Proposed for This Month	Remaining Budget
Land Acquisition	109,900	39,076	23,529	62,605	-	47,295
Construction	88,000	33,258	21,526	54,784	102	33,114
Design/Permitting	7,500	2,781	3,114	5,895	(2)	1,607
Management/ Oversight	12,900	10,076	6,616	16,692	-	(3,792)
Other Costs	17,000	2,412	1,508	3,920	-	13,080
Mitigation	800	366	-	366	-	434
Army Corps Local Share	-	-	2,279	2,279	-	(2,279)
Retention	1,400	-	-	-	-	1,400
Total	237,500	87,969	58,572	146,541	100	90,858

# Recommended Contracting Actions

## Task Order Amendments

Description	Company	Budget Estimate (\$)
<b><i>Task Order Amendments</i></b>		
<p><b>6.a.1 Task Order 01, Amendment 9 Project Management</b></p> <ul style="list-style-type: none"> <li>Add budget for additional monthly reporting and scope and budget for completed work packages GIS submittals.</li> </ul>	Houston-Moore Group	109,752
<p><b>6.a.2 Task Order 08, Amendment 14 Work-In-Kind (WIK)</b></p> <ul style="list-style-type: none"> <li>Add budget for closing out comments on the USACE Diversion Inlet Design.</li> </ul>	Houston-Moore Group	276,569
<p><b>6.a.3 Task Order 12, Amendment 1 CR-10 Bridge</b></p> <ul style="list-style-type: none"> <li>Delete scope and budget for the design of WP-13 (CR-10 Bridge) within Diversion Channel.</li> </ul>	Houston-Moore Group	<b>-665,000</b>

# Recommended Contracting Actions

## Task Order Amendments (Continued)

Description	Company	Budget Estimate (\$)
<b><i>Task Order Amendments</i></b>		
<p><b>6.a.4 Task Order 16, Amendment 4 Permit Submittal Preparation and Other Related Services</b></p> <ul style="list-style-type: none"> <li>Review existing, develop draft, and prepare updated floodplain ordinances.</li> </ul>	Houston-Moore Group	50,000
<p><b>6.a.5 Task Order 18, Amendment 2 Design of Work Package 28 (CR 16/17 Road and Bridge Design)</b></p> <ul style="list-style-type: none"> <li>Add budget to complete the design of the CR-16/ CR 17 Bridge.</li> </ul>	Houston-Moore Group	62,401
<p><b>6.a.6 Task Order 01, Amendment 4 Materials Testing Services (Work Package 42)</b></p> <ul style="list-style-type: none"> <li>Add additional survey and asbestos sampling costs for on-going asbestos abatement for WP-42C.1, WP42H., WP-42I.1, and WP4A1.A3.</li> <li>Add survey and asbestos sampling services for WP43.E.C.2 to include Romine Property.</li> <li>Add lead based sampling for WP 42F.1N.</li> </ul>	Terracon	167,490



# Recommended Contracting Actions

## Construction Change Orders

Description	Company	Budget Estimate (\$)
<b><i>Construction Change Orders</i></b>		
<p><b>6.a.7 WP-42A1A3 (4th Street Pump Station), Change Order 04</b></p> <ul style="list-style-type: none"> <li>Reconcile change items that were suspended during box culvert negotiations, including time extensions and multiple small cost adjustments for Engineer- and Owner-directed items.</li> </ul>	ICS, Inc.	15,174.67
<p><b>6.a.8 WP-42A2 (2nd Street North Pump Station), Change Order 09</b></p> <ul style="list-style-type: none"> <li>Sluice Gate Operator Covers</li> </ul>	Industrial Builders, Inc.	5,486.80
<p><b>6.a.9 WP-42F1N 2nd Street North (North of Pump Station), Change Order 01</b></p> <ul style="list-style-type: none"> <li>Watermain Insulation Change and Floodwall Cap Modification</li> </ul>	Industrial Builders, Inc.	8,122.00

# Recommended Contracting Actions

## Construction Change Orders (Continued)

Description	Company	Budget Estimate (\$)
<b><i>Construction Change Orders</i></b>		
<p><b>6.a.10 WP-42F1S (Flood Control – 2nd St. N, South of Pump Station), Change Order 10</b></p> <ul style="list-style-type: none"> <li>Disposal of 2B Vault, Differing Subsurface Conditions – Silo Disposal in Case Plaza, ST8 Cover Revisions, and Floodwall Cap Modification</li> </ul>	Industrial Builders, Inc.	32,505.68
<p><b>6.a.11 WP-42H2 (El Zagal Area Flood Risk Mgmt-Phase 2), Change Order 02</b></p> <ul style="list-style-type: none"> <li>Plugged sanitary gravity line, tree removal, storm manhole repair, standby time due to lift station/forcemain problem.</li> </ul>	Reiner Contracting Inc.	34,568.20
<p><b>6.a.12 WP-42I1 (Mickelson Levee Extension), Change Order 02</b></p> <ul style="list-style-type: none"> <li>Scope and budget for removal of concrete swimming pool at 16 North Terrace, additional asbestos abatement.</li> </ul>	Industrial Builders, Inc.	6,079.00



# Public Outreach

---



# Land Management

---





# Finance

---



# Other Business

---



# Executive Session

---



Next meeting – Aug. 25

---