

Fargo-Moorhead Metro Area Diversion Project

Baseline Scope, Schedule and Budget Presentation

June 23, 2016

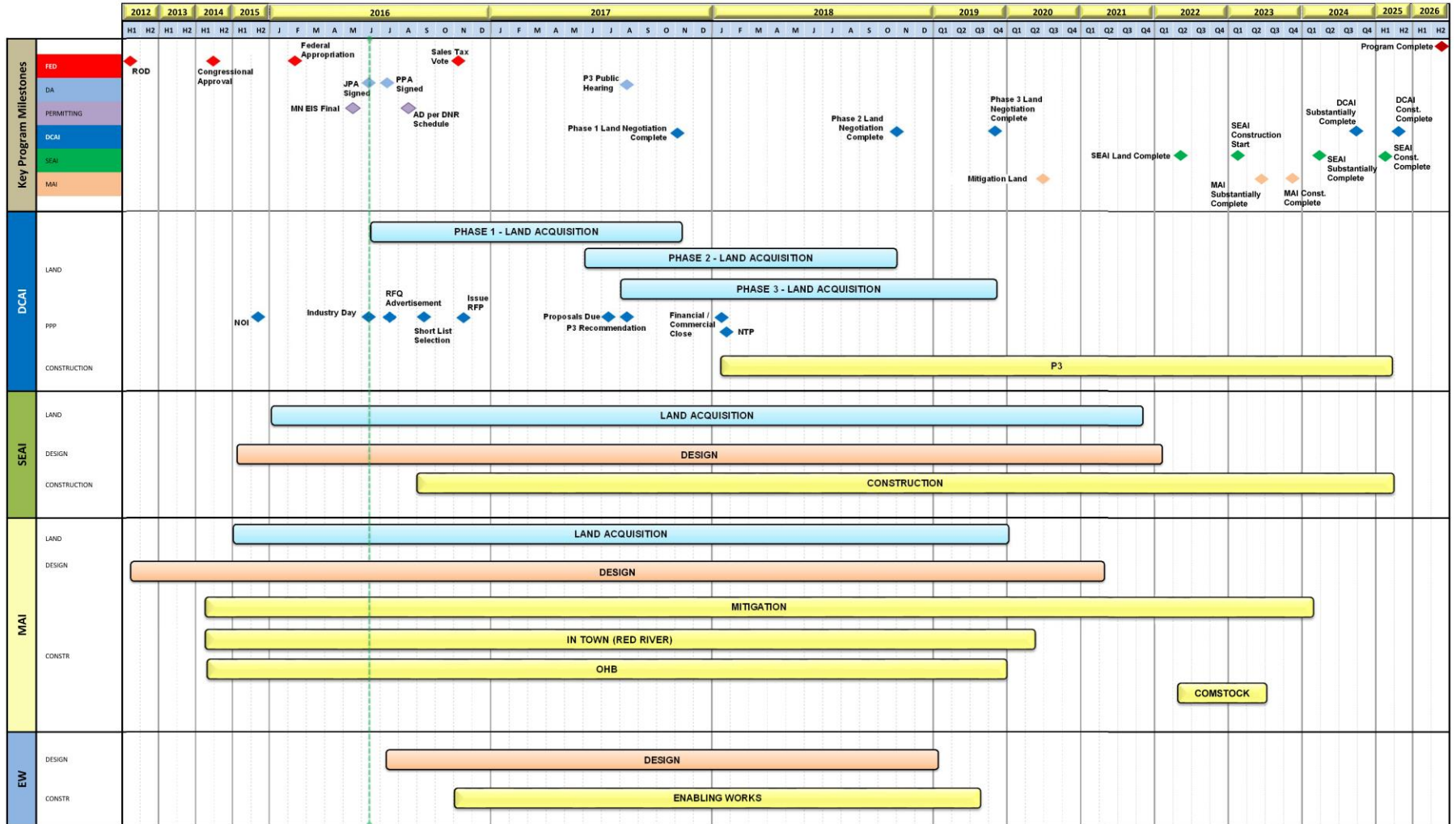
Purpose of the Program Baseline

- 💧 Sets a reference (planned) schedule and budget for executing an agreed (planned) scope of work.
- 💧 Becomes the basis for performance reporting (actual vs planned) in three areas:
 - *Scope*
 - *Schedule*
 - *Budget*
- 💧 Change control protocols are used to update the baseline.

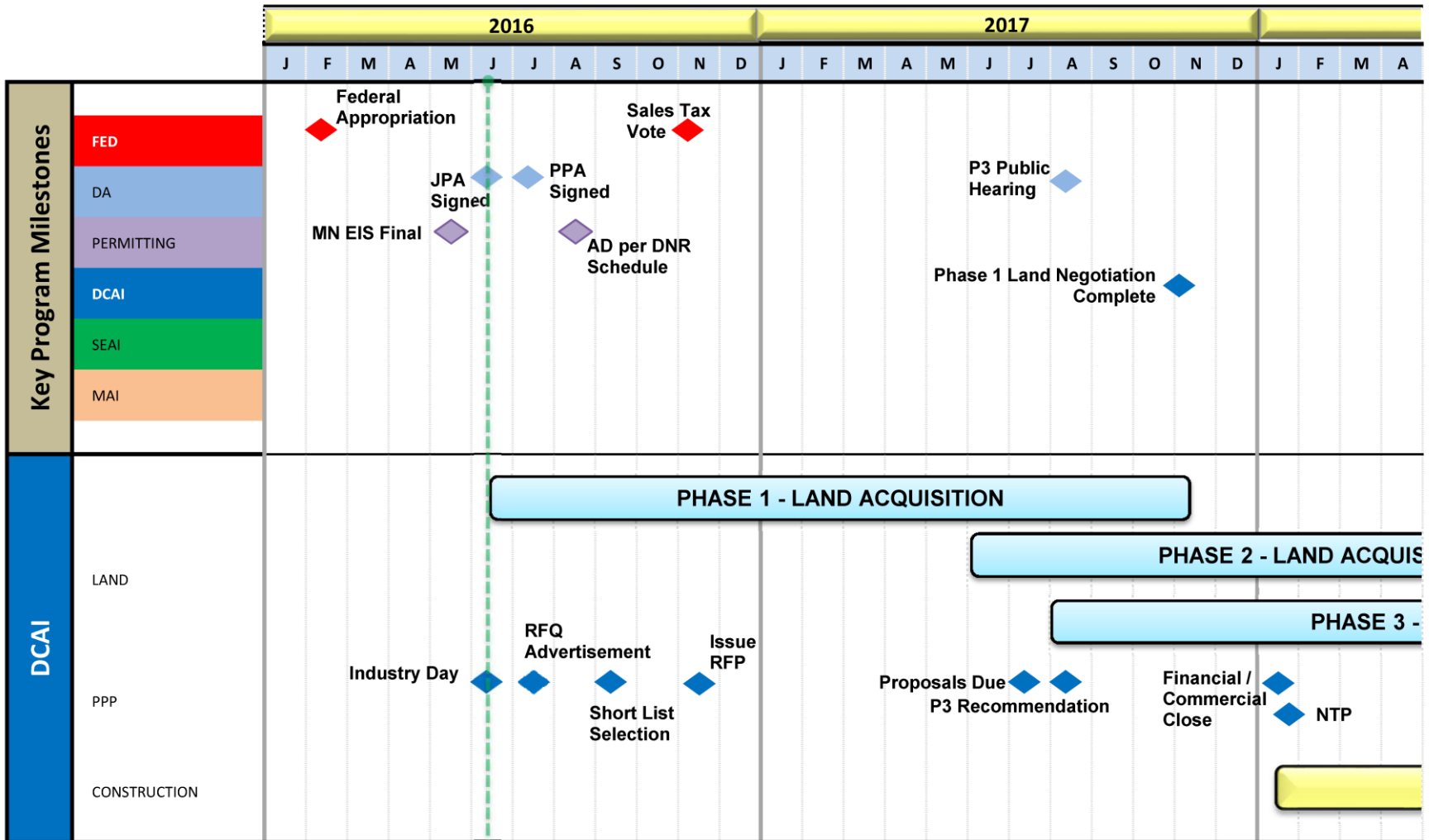
General Process for Managing the Baseline

- 💧 Diversion Authority Board approves the program Baseline (scope, schedule and budget).
- 💧 PMC reports to the Board on progress compared to the Baseline.
- 💧 Baseline is changed only with the approval of the Board.

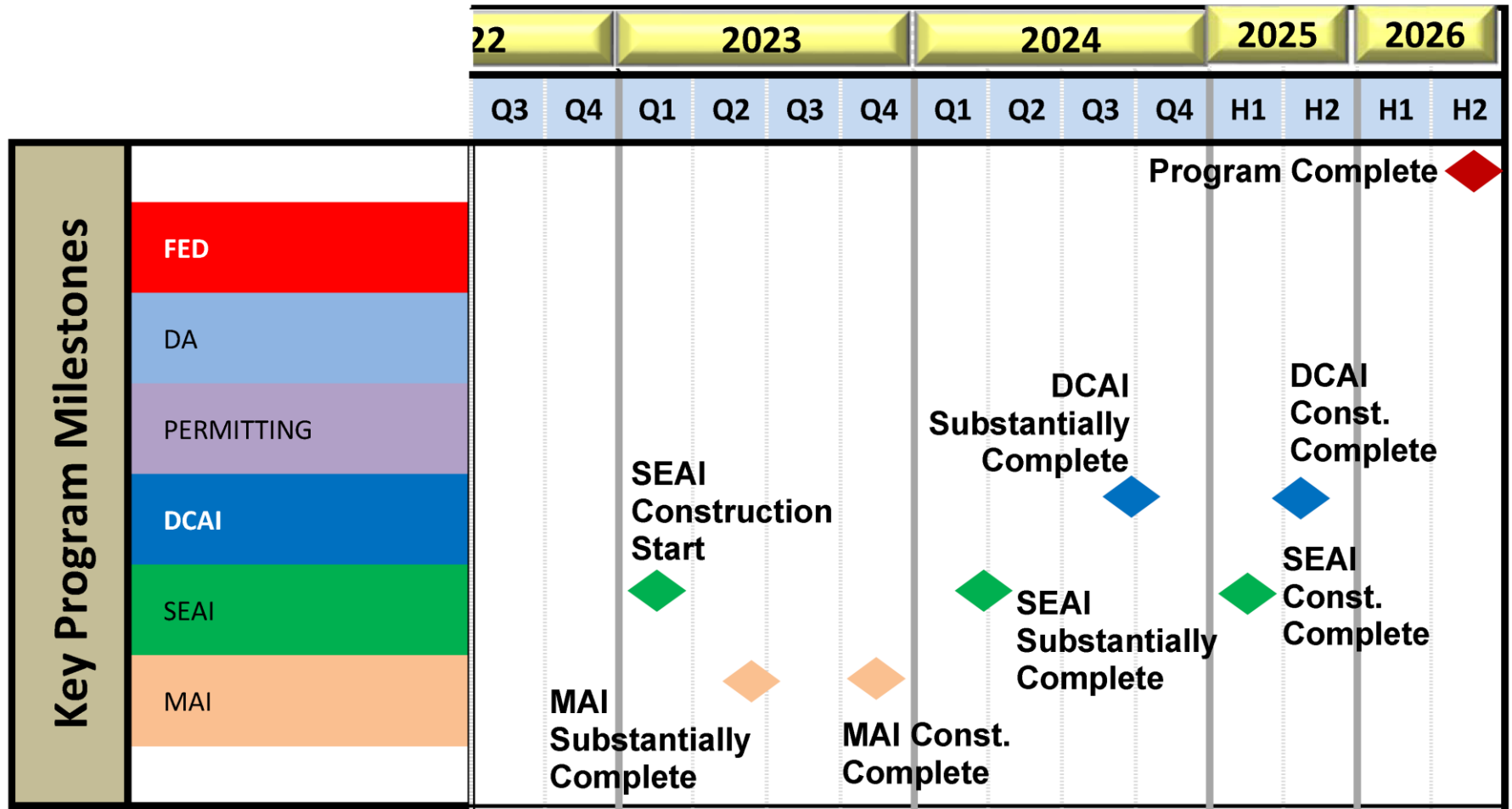
Baseline Program Schedule



Baseline Program Schedule



Baseline Program Schedule



Baseline Cost Profile

Fargo Moorhead Metro Area - Diversion Project
Program Cost Report

— Baseline Estimated Cost

